

CATALOG LISTING  
**SS94A1**  
 PAGE 1 OF 1  
 ISSUE 8  
 REVISIONS  
 A 0064262  
 B 0072441  
 C 0038704  
 D 0038694  
 E 0029511  
 J. A. S. 13 SEPT 88  
 RASTER DRAWN

**MICRO SWITCH**  
 a Honeywell Division  
 FED. MFG. CODE 91224

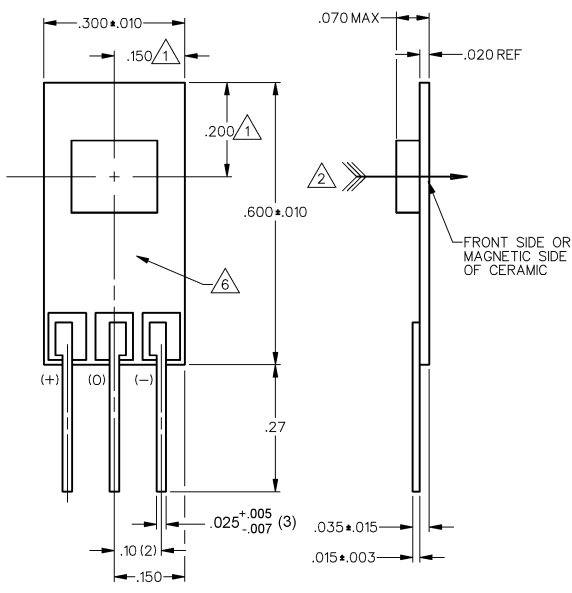
**LINEAR OUTPUT HALL EFFECT TRANSDUCER**

CATALOG LISTING  
**SS94A1**

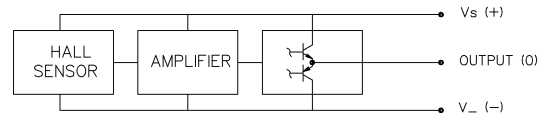
THIS DRAWING COVERS A PROPRIETARY ITEM AND IS THE PROPERTY OF MICRO SWITCH, A DIVISION OF HONEYWELL. THIS DRAWING IS NOT TO BE COPIED OR USED WITHOUT THE APPROVAL OF MICRO SWITCH

**OPERATING CHARACTERISTICS**

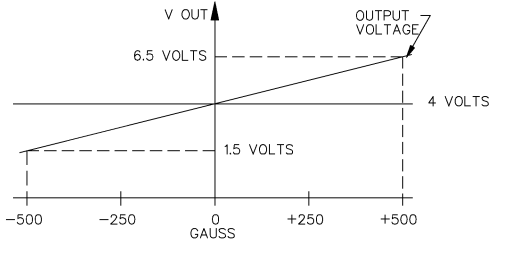
PARAMETER	MIN	TYP	MAX	UNITS	CONDITIONS/REMARKS
SUPPLY VOLTAGE	6.6	8.0	12.6	VOLTS	-40°C TO +125°C
SUPPLY CURRENT		13	30	mA	MAX @ 12.6 V @ -40°C
OUTPUT CURRENT			1	mA	SINKING OR SOURCING
OUTPUT SPAN		625 V <sub>S</sub>		VOLTS	-500G TO +500G @ 25°C (5)
SENSITIVITY	4.90	5.0	5.10	mV/g	@ 8.0 V <sub>S</sub> & 25°C
LINEARITY	-1.5	-.8	0	% OF SPAN	DEV FROM STR LINE THRU -500 AND +500
V <sub>OUT</sub> @ 0 GAUSS	3.960	4.000	4.040	VOLTS	25°C
TEMP ERROR-NULL	-.02		+.02	%/°C	-40°C TO +125°C
TEMP ERROR-GAIN	-.02		+.02	%/°C	-40°C TO +125°C



**BLOCK DIAGRAM CURRENT SINKING OR SOURCING OUTPUT**



**NOMINAL TRANSFER CHARACTERISTICS AT 8.0 VDC**



- NOTES
- 1 CENTERLINE OF HALL CELL (IC) ONLY. THE LOCATION OF THE CERAMIC COVER IS SPECIFIED
  - 2 THE + MAGNETIC FLUX IS IN THIS DIRECTION (THIS ASSUMES THE CONVENTION THAT THE DIRECTION OF THE EXTERNAL FLUX OF A MAGNET IS FROM THE NORTH TO THE SOUTH POLE OF THE MAGNET)
  - 3 - THE DEVICE CANNOT BE DAMAGED BY MAGNETIC OVERDRIVE
  - 4 - OUTPUT TYPE - RATIOMETRIC
  - 5 THE OUTPUT IS CLAMPED AT 9.0 VDC MINIMUM, 9.5 VDC TYPICAL
  - 6 ARTWORK TYPICAL

THIRD ANGLE PROJECTION

SCALE 5 : 1

DO NOT SCALE PRINT

**UNLESS OTHERWISE SPECIFIED TOLERANCES ARE**

ONE PLACE (.0) ± .030  
 TWO PLACE (.00) ± .015  
 THREE PLACE (.000) ± .005  
 ANGLES ±

WEIGHT

CAUTION  
 ESD SENSITIVITY: CLASS 3

ANSI Y14.5M-1982 APPLIES