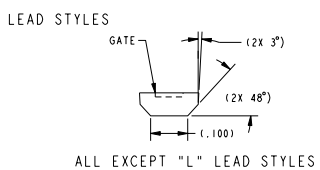
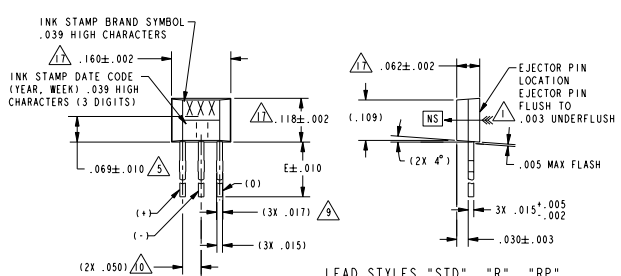


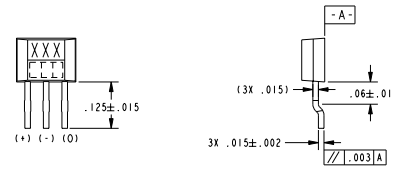
LEAD STYLES "L" ONLY



ALL EXCEPT "L" LEAD STYLES



LEAD STYLES "STD", "R", "RP"



LEAD STYLES "S" & "SP"

- NOTES
- 1 - THE MAGNETIC FLUX USED TO OPERATE THE SWITCH MUST BE IN THE DIRECTION AND LOCATION SHOWN (THIS ASSUMES THE CONVENTION THAT THE DIRECTION OF THE EXTERNAL FLUX OF A MAGNET IS FROM THE NORTH TO THE SOUTH POLE OF THE MAGNET)
 - 2 - THE MAGNETIC FIELD STRENGTH (GAUSS) REQUIRED TO CAUSE THE SWITCH TO CHANGE STATE (OPERATE AND RELEASE) WILL BE AS TABULATED. TO TEST THE SWITCH AGAINST THE SPECIFIED LIMITS, THE SWITCH MUST BE PLACED IN A UNIFORM MAGNETIC FIELD
 - 3 - ABSOLUTE MAXIMUM RATINGS ARE THE EXTREME LIMITS THE DEVICE WILL MOMENTARILY WITHSTAND WITHOUT DAMAGE TO THE DEVICE. ELECTRICAL AND MAGNETIC CHARACTERISTICS ARE NOT GUARANTEED IF THE RATED VOLTAGE AND/OR CURRENTS ARE EXCEEDED NOR WILL THE DEVICE NECESSARILY OPERATE AT ABSOLUTE MAXIMUM RATINGS
 - 4 - AMMOPACK STYLE "T2" & "T3" - 24 SWITCHES BETWEEN FOLDS, SKIP 1 SPACE AT FOLD. MAY BE REFERRED TO AS "FAN FOLD"
 - 5 - HALL ELEMENT LOCATION WITH INTEGRATED CIRCUIT TOLERANCE
 - 6 - LEADS MUST BE ADEQUATELY SUPPORTED DURING ANY FORMING/SHEERING OPERATION TO ASSURE THAT THE LEADS ARE NOT STRESSED WITHIN THE PLASTIC
 - 7 - PCB WAVE SOLDERING GUIDELINES ARE AS FOLLOWS:
250°C TO 260°C SOLDERING TEMPERATURE 3 SECONDS MAX SOLDERING TIME
28 VDC MAX EXTERNALLY APPLIED OUTPUT VOLTAGE IN OFF CONDITION ONLY. -0.5 VDC LIMIT MAY BE APPLIED WITH SWITCH IN ON OR OFF CONDITION
 - 8 - BURRS ARE ALLOWED ONLY IF FULL LENGTH OF LEADS WILL PASS THROUGH Ø.023 HOLE
 - 9 - LEAD REFERENCE DIMENSIONS DO NOT INCLUDE SOLDER THICKNESS
 - 10 - DIMENSION REFERS TO THE LOCATION OF LEAD CENTERLINES AS THEY EXIT THE PLASTIC PACKAGE
 - 11 - TYPICAL DIMENSIONS NOT SHOWN IN LEAD STYLE "S"
 - 12 - SOME COMBINATIONS OF BASIC LISTING AND PACKING OPTIONS ARE NOT AVAILABLE
 - 13 - TAPE AND AMMOPACK PER EIA-468-A-1990
 - 14 - TAPE AND REEL PER EIA-461-A-1986
 - 15 - LEAD STRAIGHTNESS MAY BE DETERIORATED ON SOME UNITS BY BULK PACKAGING. APPLICATIONS HAVING A CRITICAL LEAD STRAIGHTNESS REQUIREMENT SHOULD USE A TAPE PACKAGING OPTION
 - 16 - SOURCE VOLTAGE IS 12VDC UNLESS OTHERWISE SPECIFIED
 - 17 - MOLDED PART DIMENSIONS DO NOT INCLUDE FLASH. FLASH IS LIMITED TO .005 MAX
 - 18 - THESE HALL EFFECT SENSORS MAY HAVE AN INITIAL OUTPUT IN EITHER THE ON OR OFF STATE IF POWERED UP WITH AN APPLIED MAGNETIC FIELD IN THE DIFFERENTIAL ZONE (APPLIED MAGNETIC FIELD > Brp AND < Bop). MICRO SWITCH RECOMMENDS THAT THE APPLICATION CIRCUIT DESIGNER ALLOW 10 MICROSECONDS AFTER SUPPLY VOLTAGE HAS REACHED 5 VOLTS FOR THE OUTPUT VOLTAGE TO STABILIZE

THIS DRAWING COVERS A PROPRIETARY ITEM AND IS THE PROPERTY OF MICRO SWITCH, A DIVISION OF HONEYWELL. THIS DRAWING IS NOT TO BE COPIED OR USED WITHOUT THE APPROVAL OF MICRO SWITCH.

MICROSWITCH
a Honeywell Division

CATALOG LISTING
SOLID STATE SENSOR
SS40 SERIES CHART 1

FED. MFG. CODE 91829

THIRD ANGLE PROJECTION		
SCALE 5:1		
DO NOT SCALE PRINT		
UNLESS OTHERWISE SPECIFIED TOLERANCES ARE		
ONE PLACE	(.01)	±.030
TWO PLACES	(.001)	±.015
THREE PLACES	(.0001)	±.005
ANGLES		±
WEIGHT		

SS40 SERIES CHART 1
 REVISIONS
 A 299183
 B 299187
 C 204425
 D 204425
 E 204425
 F 204425
 G 204425
 H 204425
 I 204425
 J 204425
 K 204425
 L 204425
 M 204425
 N 204425
 O 204425
 P 204425
 Q 204425
 R 204425
 S 204425
 T 204425
 U 204425
 V 204425
 W 204425
 X 204425
 Y 204425
 Z 204425
 AA 204425
 AB 204425
 AC 204425
 AD 204425
 AE 204425
 AF 204425
 AG 204425
 AH 204425
 AI 204425
 AJ 204425
 AK 204425
 AL 204425
 AM 204425
 AN 204425
 AO 204425
 AP 204425
 AQ 204425
 AR 204425
 AS 204425
 AT 204425
 AU 204425
 AV 204425
 AW 204425
 AX 204425
 AY 204425
 AZ 204425
 BA 204425
 BB 204425
 BC 204425
 BD 204425
 BE 204425
 BF 204425
 BG 204425
 BH 204425
 BI 204425
 BJ 204425
 BK 204425
 BL 204425
 BM 204425
 BN 204425
 BO 204425
 BP 204425
 BQ 204425
 BR 204425
 BS 204425
 BT 204425
 BU 204425
 BV 204425
 BW 204425
 BX 204425
 BY 204425
 BZ 204425
 CA 204425
 CB 204425
 CC 204425
 CD 204425
 CE 204425
 CF 204425
 CG 204425
 CH 204425
 CI 204425
 CJ 204425
 CK 204425
 CL 204425
 CM 204425
 CN 204425
 CO 204425
 CP 204425
 CQ 204425
 CR 204425
 CS 204425
 CT 204425
 CU 204425
 CV 204425
 CW 204425
 CX 204425
 CY 204425
 CZ 204425
 DA 204425
 DB 204425
 DC 204425
 DD 204425
 DE 204425
 DF 204425
 DG 204425
 DH 204425
 DI 204425
 DJ 204425
 DK 204425
 DL 204425
 DM 204425
 DN 204425
 DO 204425
 DP 204425
 DQ 204425
 DR 204425
 DS 204425
 DT 204425
 DU 204425
 DV 204425
 DW 204425
 DX 204425
 DY 204425
 DZ 204425
 EA 204425
 EB 204425
 EC 204425
 ED 204425
 EE 204425
 EF 204425
 EG 204425
 EH 204425
 EI 204425
 EJ 204425
 EK 204425
 EL 204425
 EM 204425
 EN 204425
 EO 204425
 EP 204425
 EQ 204425
 ER 204425
 ES 204425
 ET 204425
 EU 204425
 EV 204425
 EW 204425
 EX 204425
 EY 204425
 EZ 204425
 FA 204425
 FB 204425
 FC 204425
 FD 204425
 FE 204425
 FF 204425
 FG 204425
 FH 204425
 FI 204425
 FJ 204425
 FK 204425
 FL 204425
 FM 204425
 FN 204425
 FO 204425
 FP 204425
 FQ 204425
 FR 204425
 FS 204425
 FT 204425
 FU 204425
 FV 204425
 FW 204425
 FX 204425
 FY 204425
 FZ 204425
 GA 204425
 GB 204425
 GC 204425
 GD 204425
 GE 204425
 GF 204425
 GG 204425
 GH 204425
 GI 204425
 GJ 204425
 GK 204425
 GL 204425
 GM 204425
 GN 204425
 GO 204425
 GP 204425
 GQ 204425
 GR 204425
 GS 204425
 GT 204425
 GU 204425
 GV 204425
 GW 204425
 GX 204425
 GY 204425
 GZ 204425
 HA 204425
 HB 204425
 HC 204425
 HD 204425
 HE 204425
 HF 204425
 HG 204425
 HH 204425
 HI 204425
 HJ 204425
 HK 204425
 HL 204425
 HM 204425
 HN 204425
 HO 204425
 HP 204425
 HQ 204425
 HR 204425
 HS 204425
 HT 204425
 HU 204425
 HV 204425
 HW 204425
 HX 204425
 HY 204425
 HZ 204425
 IA 204425
 IB 204425
 IC 204425
 ID 204425
 IE 204425
 IF 204425
 IG 204425
 IH 204425
 II 204425
 IJ 204425
 IK 204425
 IL 204425
 IM 204425
 IN 204425
 IO 204425
 IP 204425
 IQ 204425
 IR 204425
 IS 204425
 IT 204425
 IU 204425
 IV 204425
 IW 204425
 IX 204425
 IY 204425
 IZ 204425
 JA 204425
 JB 204425
 JC 204425
 JD 204425
 JE 204425
 JF 204425
 JG 204425
 JH 204425
 JI 204425
 JJ 204425
 JK 204425
 JL 204425
 JM 204425
 JN 204425
 JO 204425
 JP 204425
 JQ 204425
 JR 204425
 JS 204425
 JT 204425
 JU 204425
 JV 204425
 JW 204425
 JX 204425
 JY 204425
 JZ 204425
 KA 204425
 KB 204425
 KC 204425
 KD 204425
 KE 204425
 KF 204425
 KG 204425
 KH 204425
 KI 204425
 KJ 204425
 KK 204425
 KL 204425
 KM 204425
 KN 204425
 KO 204425
 KP 204425
 KQ 204425
 KR 204425
 KS 204425
 KT 204425
 KU 204425
 KV 204425
 KW 204425
 KX 204425
 KY 204425
 KZ 204425
 LA 204425
 LB 204425
 LC 204425
 LD 204425
 LE 204425
 LF 204425
 LG 204425
 LH 204425
 LI 204425
 LJ 204425
 LK 204425
 LL 204425
 LM 204425
 LN 204425
 LO 204425
 LP 204425
 LQ 204425
 LR 204425
 LS 204425
 LT 204425
 LU 204425
 LV 204425
 LW 204425
 LX 204425
 LY 204425
 LZ 204425
 MA 204425
 MB 204425
 MC 204425
 MD 204425
 ME 204425
 MF 204425
 MG 204425
 MH 204425
 MI 204425
 MJ 204425
 MK 204425
 ML 204425
 MM 204425
 MN 204425
 MO 204425
 MP 204425
 MQ 204425
 MR 204425
 MS 204425
 MT 204425
 MU 204425
 MV 204425
 MW 204425
 MX 204425
 MY 204425
 MZ 204425
 NA 204425
 NB 204425
 NC 204425
 ND 204425
 NE 204425
 NF 204425
 NG 204425
 NH 204425
 NI 204425
 NJ 204425
 NK 204425
 NL 204425
 NM 204425
 NN 204425
 NO 204425
 NP 204425
 NQ 204425
 NR 204425
 NS 204425
 NT 204425
 NU 204425
 NV 204425
 NW 204425
 NX 204425
 NY 204425
 NZ 204425
 OA 204425
 OB 204425
 OC 204425
 OD 204425
 OE 204425
 OF 204425
 OG 204425
 OH 204425
 OI 204425
 OJ 204425
 OK 204425
 OL 204425
 OM 204425
 ON 204425
 OO 204425
 OP 204425
 OQ 204425
 OR 204425
 OS 204425
 OT 204425
 OU 204425
 OV 204425
 OW 204425
 OX 204425
 OY 204425
 OZ 204425
 PA 204425
 PB 204425
 PC 204425
 PD 204425
 PE 204425
 PF 204425
 PG 204425
 PH 204425
 PI 204425
 PJ 204425
 PK 204425
 PL 204425
 PM 204425
 PN 204425
 PO 204425
 PP 204425
 PQ 204425
 PR 204425
 PS 204425
 PT 204425
 PU 204425
 PV 204425
 PW 204425
 PX 204425
 PY 204425
 PZ 204425
 QA 204425
 QB 204425
 QC 204425
 QD 204425
 QE 204425
 QF 204425
 QG 204425
 QH 204425
 QI 204425
 QJ 204425
 QK 204425
 QL 204425
 QM 204425
 QN 204425
 QO 204425
 QP 204425
 QQ 204425
 QR 204425
 QS 204425
 QT 204425
 QU 204425
 QV 204425
 QW 204425
 QX 204425
 QY 204425
 QZ 204425
 RA 204425
 RB 204425
 RC 204425
 RD 204425
 RE 204425
 RF 204425
 RG 204425
 RH 204425
 RI 204425
 RJ 204425
 RK 204425
 RL 204425
 RM 204425
 RN 204425
 RO 204425
 RP 204425
 RQ 204425
 RR 204425
 RS 204425
 RT 204425
 RU 204425
 RV 204425
 RW 204425
 RX 204425
 RY 204425
 RZ 204425
 SA 204425
 SB 204425
 SC 204425
 SD 204425
 SE 204425
 SF 204425
 SG 204425
 SH 204425
 SI 204425
 SJ 204425
 SK 204425
 SL 204425
 SM 204425
 SN 204425
 SO 204425
 SP 204425
 SQ 204425
 SR 204425
 SS 204425
 ST 204425
 SU 204425
 SV 204425
 SW 204425
 SX 204425
 SY 204425
 SZ 204425
 TA 204425
 TB 204425
 TC 204425
 TD 204425
 TE 204425
 TF 204425
 TG 204425
 TH 204425
 TI 204425
 TJ 204425
 TK 204425
 TL 204425
 TM 204425
 TN 204425
 TO 204425
 TP 204425
 TQ 204425
 TR 204425
 TS 204425
 TT 204425
 TU 204425
 TV 204425
 TW 204425
 TX 204425
 TY 204425
 TZ 204425
 UA 204425
 UB 204425
 UC 204425
 UD 204425
 UE 204425
 UF 204425
 UG 204425
 UH 204425
 UI 204425
 UJ 204425
 UK 204425
 UL 204425
 UM 204425
 UN 204425
 UO 204425
 UP 204425
 UQ 204425
 UR 204425
 US 204425
 UT 204425
 UU 204425
 UV 204425
 UW 204425
 UX 204425
 UY 204425
 UZ 204425
 VA 204425
 VB 204425
 VC 204425
 VD 204425
 VE 204425
 VF 204425
 VG 204425
 VH 204425
 VI 204425
 VJ 204425
 VK 204425
 VL 204425
 VM 204425
 VN 204425
 VO 204425
 VP 204425
 VQ 204425
 VR 204425
 VS 204425
 VT 204425
 VU 204425
 VV 204425
 VW 204425
 VX 204425
 VY 204425
 VZ 204425
 WA 204425
 WB 204425
 WC 204425
 WD 204425
 WE 204425
 WF 204425
 WG 204425
 WH 204425
 WI 204425
 WJ 204425
 WK 204425
 WL 204425
 WM 204425
 WN 204425
 WO 204425
 WP 204425
 WQ 204425
 WR 204425
 WS 204425
 WT 204425
 WU 204425
 WV 204425
 WW 204425
 WX 204425
 WY 204425
 WZ 204425
 XA 204425
 XB 204425
 XC 204425
 XD 204425
 XE 204425
 XF 204425
 XG 204425
 XH 204425
 XI 204425
 XJ 204425
 XK 204425
 XL 204425
 XM 204425
 XN 204425
 XO 204425
 XP 204425
 XQ 204425
 XR 204425
 XS 204425
 XT 204425
 XU 204425
 XV 204425
 XW 204425
 XX 204425
 XY 204425
 XZ 204425
 YA 204425
 YB 204425
 YC 204425
 YD 204425
 YE 204425
 YF 204425
 YG 204425
 YH 204425
 YI 204425
 YJ 204425
 YK 204425
 YL 204425
 YM 204425
 YN 204425
 YO 204425
 YP 204425
 YQ 204425
 YR 204425
 YS 204425
 YT 204425
 YU 204425
 YV 204425
 YW 204425
 YX 204425
 YY 204425
 YZ 204425
 ZA 204425
 ZB 204425
 ZC 204425
 ZD 204425
 ZE 204425
 ZF 204425
 ZG 204425
 ZH 204425
 ZI 204425
 ZJ 204425
 ZK 204425
 ZL 204425
 ZM 204425
 ZN 204425
 ZO 204425
 ZP 204425
 ZQ 204425
 ZR 204425
 ZS 204425
 ZT 204425
 ZU 204425
 ZV 204425
 ZW 204425
 ZX 204425
 ZY 204425
 ZZ 204425

ANSI Y14.5M-1982 APPLIES

MICRO SWITCH
 a Honeywell Division
 FED. MFG. CODE 91929

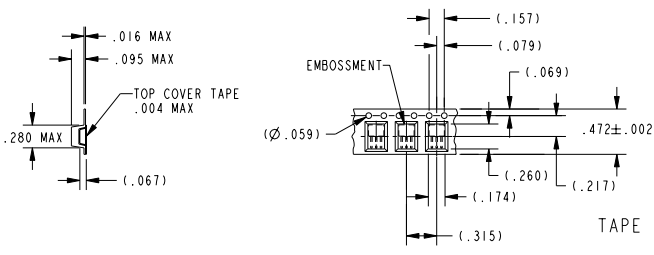
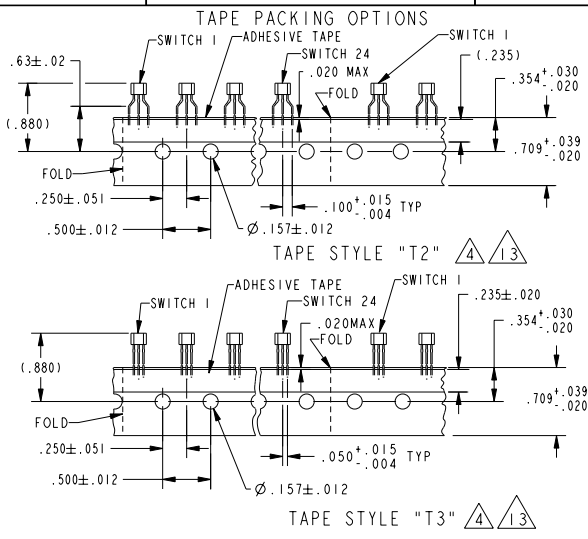
SOLID STATE SENSOR

SS40 SERIES CHART 1

CATALOG LISTING

THIS DRAWING COVERS A PROPRIETARY ITEM AND IS THE PROPERTY OF MICRO SWITCH, A DIVISION OF HONEYWELL. THIS DRAWING IS NOT TO BE COPIED OR USED WITHOUT THE APPROVAL OF MICRO SWITCH

CATALOGING SYSTEM $\Delta 12$



PREFIX SUFFIX

BASIC CATALOG LISTING:
 PACKAGE STYLE, MAGNETIC TYPE,
 ELECTRICAL/MAGNETIC SPECS

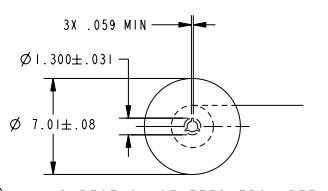
LEAD & PACKAGING OPTIONS:
 BULK, TAPE & REEL,
 POCKET TAPE & REEL

CHARACTERS IN THESE POSITIONS OF THE LISTING ARE BRANDED ON THE PRODUCT

SS40
 SS4=PACKAGE STYLE
 MAGNETIC TYPE
 1=BIPOLAR
 4=UNIPOLAR
 6=LATCH
 9=LINEAR

ELECTRICAL/MAGNETIC OPTIONS
 (A-K, & U-Z) A=STANDARD
 B-K & U-Z=SPECIALS
 SPECIAL FEATURE (BLANK, 1-9)
 BLANK=STANDARD
 1-9=SPECIALS

DESCRIPTION	NOMINAL LEAD SPACING	NOMINAL "E" DIM LENGTH	PARTS PER CONTAINER
STANDARD, BULK PACK $\Delta 15$.050	.590	1000/BAG
TAPE, AMMOPACK	.100	.590	5000/BOX
TAPE, AMMOPACK	.050	.590	5000/BOX
SURF MOUNT, BULK PACK	.050	.125	1000/BAG
SURF MOUNT, POCKET TAPE	.050	.125	1000/REEL
REDUCED LENGTH, BULK PACK	.050	.130	1000/BAG
REDUCED LENGTH, POCKET TAPE	.050	.130	1000/REEL
LONG LEADS, BULK PACK	.050	.735	1000/BAG



THIRD ANGLE PROJECTION

SCALE 5 : 1

DO NOT SCALE PRINT

UNLESS OTHERWISE SPECIFIED TOLERANCES ARE

ONE PLACE (.01) ±.030

TWO PLACE (.00) ±.015

THREE PLACE (.000) ±.005

ANGLES °

WEIGHT

ANSI Y14.5M-1982 APPLIES

CATALOG LISTING
SS40 SERIES CHART 1
 ISSUE OF
16
 CHECK
 REVISIONS
A C093816
 KED 18JAN99
B C094110
 JAF 18JAN99
C 205183
 JAF 18JAN99
D 206240
 JAF 18JAN99
E 204425
 JAF 18JAN99
 PTC/CAD 3D
 DRAWN
 KED
 18JAN99
 CHECK
 JAF
 18JAN99
 CHECK
 JAF
 18JAN99
 RELEASE NO. CO-75147B
 REPLACES
 PAGE 3 OF 4

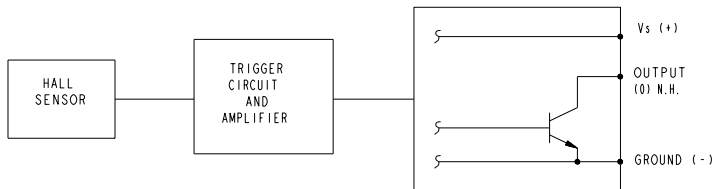
TABLE 1 - MAGNETIC AND ELECTRICAL SPECIFICATIONS $\triangle 2 \triangle 18$

	-40°C	0°C	25°C	85°C	125°C	150°C
MIN OPERATE GAUSS						
SS41	NS	NS	NS	NS	NS	NS
SS41D	NS	NS	NS	NS	NS	NS
MAX OPERATE GAUSS						
SS41	200	150	150	150	200	250
SS41D	340	340	340	340	NS	NS
MIN RELEASE GAUSS						
SS41	-160	-160	-140	-150	-200	-250
SS41D	-340	-340	-340	-340	NS	NS
MAX RELEASE GAUSS						
SS41	NS	NS	NS	NS	NS	NS
SS41D	NS	NS	NS	NS	NS	NS
MIN DIFF GAUSS						
SS41	40	50	50	50	60	60
SS41D	40	40	40	40	NS	NS

TABLE 2

	SS41	SS41D
MAGNETIC TYPE	BIPOLAR	BIPOLAR
BRAND SYMBOL	S41	S41
PACKING	BAG	BAG
SPECIFIED VOLTAGE RANGE	4.5 - 24	4.5 - 24
MAX Ioff milliamp	10.0	10.0
MAX Ion milliamp	11.3	11.3
RATED SINK CURRENT Ma	20	20
MAX Vsat VOLTS 25°C /16	0.4	0.4
MAX LEAKAGE AT 24V, μ A	10	10
RISE TIME AT 25°C 10% TO 90% μ S	1.5	1.5
FALL TIME AT 25°C 90% TO 10% μ S	1.5	1.5
STORAGE TEMP °C	-40 TO +150	-40 TO +150
OPERATING TEMP °C	-40 TO +150	-40 TO +85

ABSOLUTE LIMITS	SS41	SS41D
SUPPLY VOLTAGE	-28 TO +28	-24 TO +28
APPLIED OUTPUT VOLTAGE /8	-0.5 TO +28	-0.5 TO +28
OUTPUT CURRENT mA	20	20
MAGNETIC FLUX GAUSS	NO LIMIT	NO LIMIT



THIRD ANGLE PROJECTION

SCALE NONE

DO NOT SCALE PRINT

UNLESS OTHERWISE SPECIFIED TOLERANCES ARE

ONE PLACE (.0) ±.030

TWO PLACE (.00) ±.015

THREE PLACE (.000) ±.005

ANGLES ±

WEIGHT

MICRO SWITCH
a Honeywell Division
FED. MFG. CODE 91929

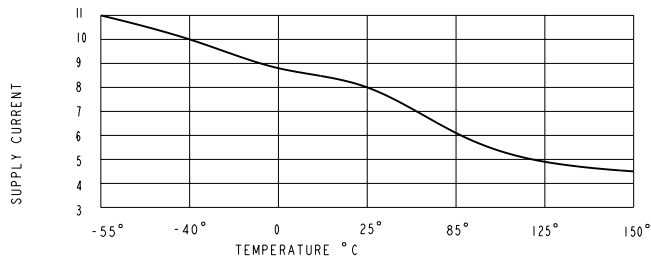
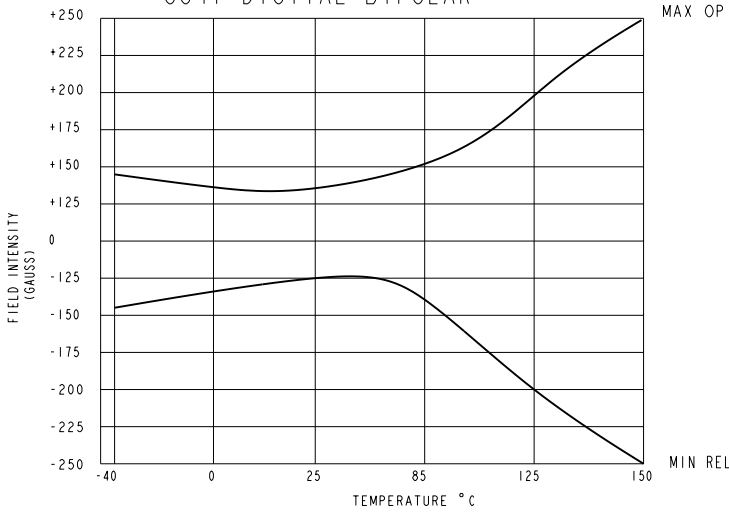
SOLID STATE SENSOR

SS40 SERIES CHART 1

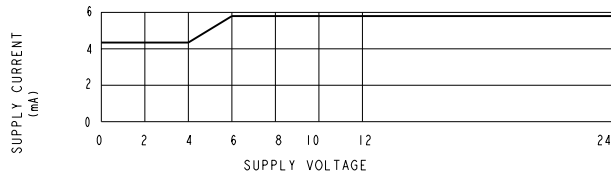
CATALOG LISTING

THIS DRAWING COVERS A PROPRIETARY ITEM AND IS THE PROPERTY OF MICRO SWITCH, A DIVISION OF HONEYWELL. THIS DRAWING IS NOT TO BE COPIED OR USED WITHOUT THE APPROVAL OF MICRO SWITCH

SS41 DIGITAL BIPOLAR



MAXIMUM SUPPLY CURRENT VS TEMPERATURE (OFF)



TYPICAL SUPPLY CURRENT (DEVICE OFF) AT 25 °C

ISSUE 16
 CATALOG LISTING SS40 SERIES CHART 1
 PAGE 4 OF 4
 RELEASE NO. CO-75147B
 REPLACES

REVISIONS
 A COP3816
 B COP4110
 C 205183
 D 205240
 E 204425
 F 15EP22

PTC/CAD 3D
 DRAWN
 KED 18JAN99
 CHECK JAF 18JAN99
 CHECK

ANSI Y14.5M-1982 APPLIES

THIRD ANGLE PROJECTION	
SCALE	NONE
DO NOT SCALE PRINT	
UNLESS OTHERWISE SPECIFIED TOLERANCES ARE	
ONE PLACE	(.0) ±.030
TWO PLACE	(.00) ±.015
THREE PLACE	(.000) ±.005
ANGLES	±
WEIGHT	