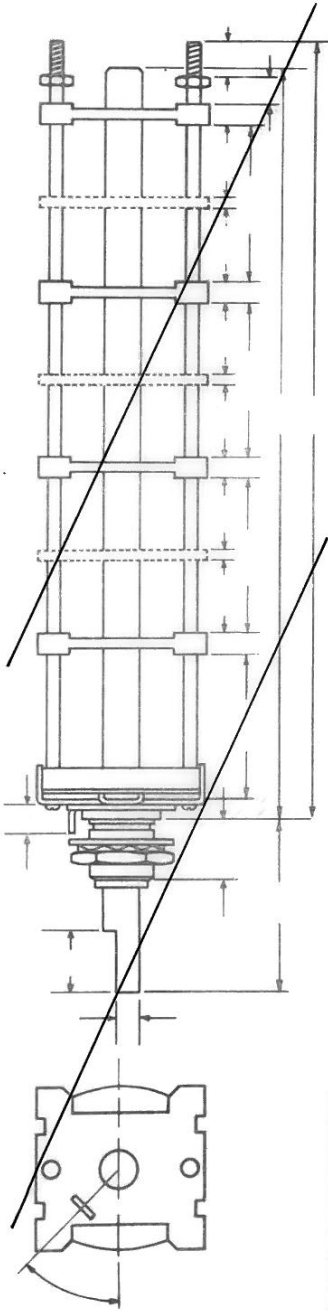
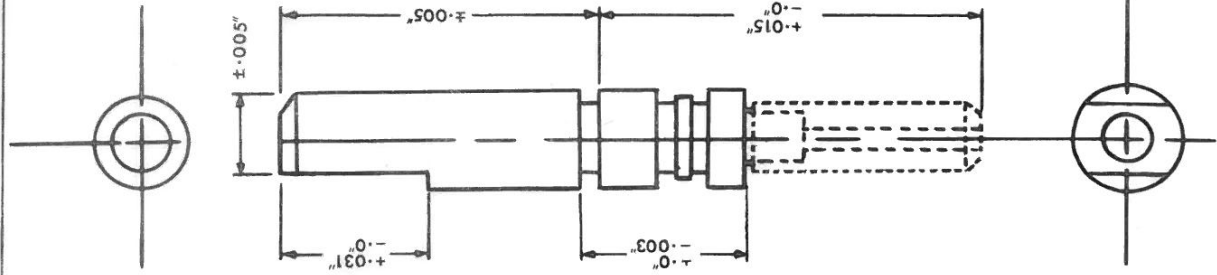
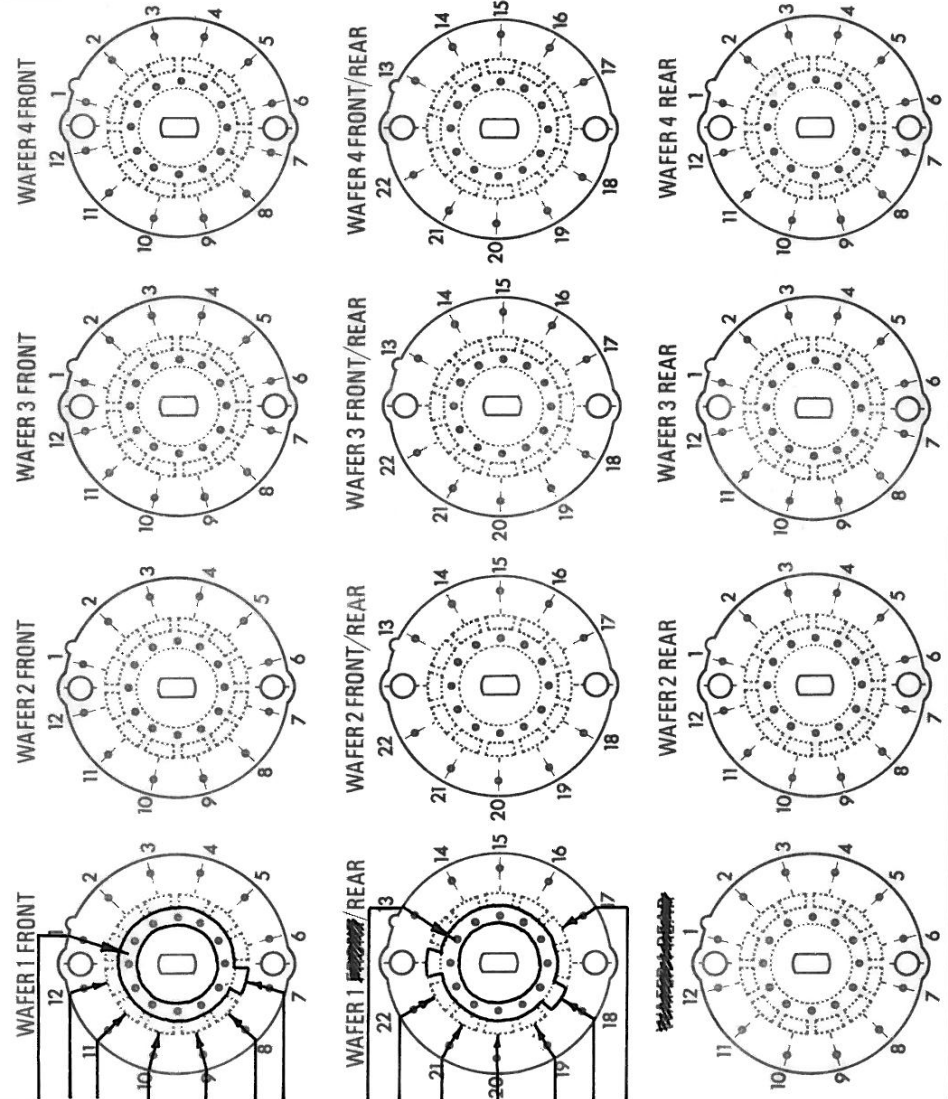


ROTARY WAFER SWITCH MA ~~30~~ INDEXING



N.S.F. SMT 1 OF 2
 SPEC.
 NO. 455772 MA

NOTES	
PREFERRED MECHANISM TYPE MU, see Engineering Data Sheet 101	
For STANDARD CONTACT ARRANGEMENTS see Engineering Bulletins 25a & 29a	
SEALED/NON SEALED	
WAFER TYPE, MA, MA	
No. of POSITIONS	
No. of WAFERS WAFER ONLY (without frames if 12 with Stops)	
SHORTING /NON SHORTING	
STANDARD /STANDARD	
INDEX SPRINGS	
TORQUE, LIGHT/MEDIUM/HEAVY MARKING (if required)	
<p>WAFER ONLY. FIT P.C. CONTACT FRAMES 22198A AND 22199A. FIT RET. MOULD 222062.</p>	
ISSUE	2
DATE	13/10/87
CHANGE	RET MOULD ADDED.
CN. No.	79308
CHANGES	
RAISED:	<i>ABE</i>
CHECKED:	DATE: 19/1/87
CUSTOMER	FARNELL
PART No.	149-178
N.S.F. SPEC. No. 455772 MA	



ALL OTHER DIMENSIONS AS