

M1

Panel Mounted

Keyswitches

M1

Panel cut-out (mm) ∇ 15.1 × 15.1

- Characteristics
- double pole change-over or three circuit selector switching functions
 - key trapping option
 - two body style options
 - gold-plated contacts
 - PCB Terminals

Rating 250 VAC, 100 mA

Dimensions (mm) 18 × 16
body style A
18 × 18
body style E

Actuator ■ key (common or differs)

Approvals none



Preferred Range

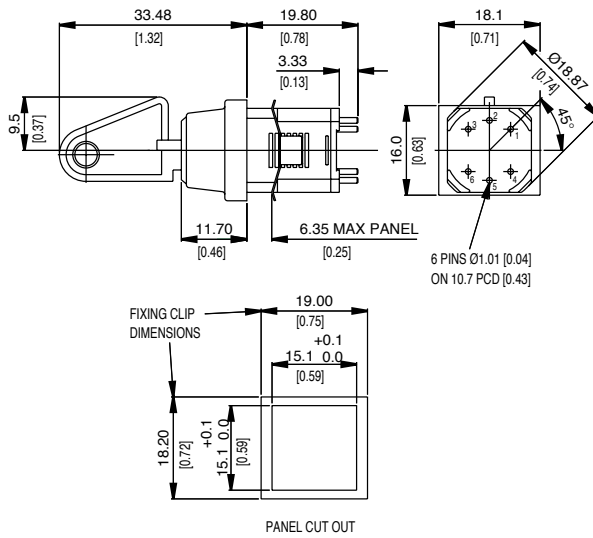
| Ordering Reference | Terminal | Circuit | Actuator | Contacts | Electrical rating |
|--------------------|----------|--------------------|----------|-------------|-------------------|
| M1HAAAEE | Pins | 2 pole CO | Key | Gold-plated | 250 VAC, 100 mA |
| M1HAEAAE | Pins | 2 pole CO | Key | Gold-plated | 250 VAC, 100 mA |
| M1HAAAAJ | Pins | 3 circuit selector | Key | Gold-plated | 250 VAC, 100 mA |



Specifications

| | |
|----------------------|---|
| Key | Nickel silver |
| Body | Glass-fibre reinforced nylon |
| Springs | Stainless steel |
| Contacts | Moving - gold-plated phosphor bronze. Fixed - gold-plated brass |
| Terminals | 1.01 mm (0.04 in) dia × 3.3 mm (0.13 in) gold-plated brass |
| Temperature range °C | -20°C to +60°C |
| Mechanical life | 50,000 operations (minimum) |
| Mounting | Retaining clip |
| Actuators | Key |
| Switching function | Double pole change-over, three circuit selector |
| Key indexing | 90° |

Dimensions



Recommended maximum electrical ratings

| Voltage (max) | Resistive load (A) | Inductive load | Horsepower | Approval |
|---------------|--------------------|----------------|------------|------------------------------------|
| 250 VAC | 100 mA | - | - | General rating - 50,000 operations |
| 0-15 VDC | 100 mA | - | - | General rating - 50,000 operations |
| 15-30 VDC | 100 mA | - | - | General rating - 50,000 operations |

Operating Characteristics

| Switching function | Reference | Actuator | | Body style (mm) | Key trapping | Diagram |
|-------------------------|-----------|----------|---------------------------|-----------------|--------------|---------|
| | | Type | Code | | | |
| Double pole change-over | M1BAAAAE | Key | 001 | A - 18 × 16 | No | |
| | M1HAAAAE | Key | 007 | A - 18 × 16 | No | |
| | M1HAEEAE | Key | 007 | E - 18 × 18 | No | |
| | M1MAAAAE | Key | Production run key coding | A - 18 × 16 | No | |
| | M1MAEEAE | Key | Production run key coding | E - 18 × 18 | No | |
| Double pole change-over | M1MCAAEE | Key | Production run key coding | A - 18 × 16 | Yes | |
| | M1MCEAAE | Key | Production run key coding | E - 18 × 18 | Yes | |
| Three circuit selector | M1HAAAAJ | Key | 007 | A - 18 × 16 | No | |
| | M1HAEEAJ | Key | 007 | E - 18 × 18 | No | |
| | M1MAAAAJ | Key | Production run key coding | A - 18 × 16 | No | |
| | M1MAEEAJ | Key | Production run key coding | E - 18 × 18 | No | |

Type coding key for standard products

| | | | | | | | | |
|--------------------|--|-------------|---|---|---|---|---|---|
| Basic type | M1 | Example: M1 | B | A | A | A | A | E |
| Keycode | B 001 key H 007 key M Production run key coding | | | | | | | |
| Key trapping | A Key removable in all positions C Key trapped horizontally, right | | | | | | | |
| Body style | A 18.0 mm (0.710 in) × 16.0 mm (0.630 in) rectangular bezel E 18.0 mm (0.710 in) square bezel | | | | | | | |
| Body colour | A Black | | | | | | | |
| Terminal | A 1.01 mm (0.040 in) dia × 3.30 mm (0.130 in) | | | | | | | |
| Switching function | E Double pole change-over J Three circuit selector | | | | | | | |

