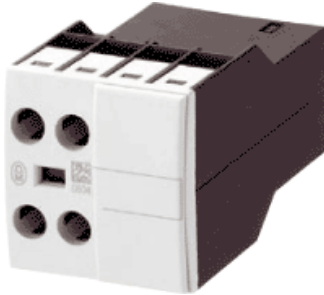
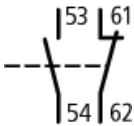


Type: **DILA-XHI11**
 Article No.: **276421**



| Ordering information | | | |
|--|----------|---|-----------------|
| Connection technique | | | Screw terminals |
| Contacts M = Make M E = Early-make | | | 1 M |
| Contacts B = Break B L = Late-break | | | 1 B |
| Rated operational current AC-15 220 V 230 V 240 V | I_e | A | 6 |
| Rated operational current AC-15 380 V 400 V 415 V | I_e | A | 3 |
| Conventional current, open at 60 °C | I_{th} | A | 10 |
| Distinctive number and version of combination DILA(C)-40 | | | 51E |
| Distinctive number and version of combination DILA(C)-31 | | | 42 |
| Distinctive number and version of combination DILA(C)-22 | | | 33 |

Contact sequence



Note concerning the product

Interlocked opposing contacts

Notes concerning the product group

Version E combinations correspond to EN 50011 and are to be preferred; other combinations correspond to EN 50005

| Auxiliary contacts | | | |
|--|-----------|------|----------------|
| Zwangsführung der Schaltglieder innerhalb eines Hilfsschalterbausteins (nach IEC 60947-5-1 Anhang L) | | | Yes |
| Break contact (not late-break contact) suitable as a mirror contact (to IEC/EN 60947-4-1 Annex F) | | | DILM7 – DILM32 |
| Rated impulse withstand voltage | U_{imp} | V AC | 6000 |
| Overvoltage category/pollution degree | | | III/3 |
| Rated insulation voltage | | | |

| | | | |
|--|--------------|---------------|---|
| AC | U_i | V AC | 690 |
| Rated operational voltage | U_e | V AC | 500 |
| Safe isolation to VDE 0106 Part 101 and Part 101/A1 | | | |
| between coil and auxiliary contacts | | V AC | 400 |
| between the auxiliary contacts | | V AC | 400 |
| Rated operational current | | | |
| AC-15 | | | |
| 230 V | I_e | A | 6 |
| 380/415 V | I_e | A | 3 |
| DC-13 L/R f 15 ms | | | |
| 24 V | I_e | A | 10 |
| 60 V | I_e | A | 6 |
| 110 V | I_e | A | 3 |
| 220 V | I_e | A | 1 |
| Conv. thermal current | I_{th} | A | 10 |
| Control circuit reliability (at $U_e = 24$ V DC, $U_{min} = 17$ V, $I_{min} = 5.4$ mA) | Failure rate | » | -8, < 1 one failure at 100 million operations |
| Component lifespan | | | |
| at $U_e = 230$ V, AC-15, 3 A | Operations | $\times 10^6$ | 1.3 |
| Short-circuit rating without welding | | | |
| max. fuse | | A gG/gL | 10 |
| Notes | | | |
| | | | Making and breaking conditions to DC-13, time L/R constant as stated See "Fuses" overlay for time/current characteristic on request not with DIL...-XHIV and DIL...-XHICV |

Moeller GmbH, Hein-Moeller-Str. 7-11, D-53115 Bonn
E-Mail: catalog@moeller.net, Internet: www.moeller.net, <http://catalog.moeller.net>
Copyright 2005 by Moeller GmbH. Subject to modifications. HPL-C2005GB-INT V3.0