

Push Buttons & Operator Interface - XAL Control Stations Assembly Components



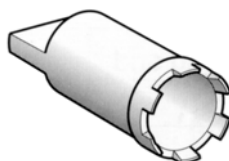
ZENL1111



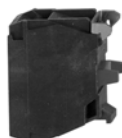
ZALV**



ZB5SZ3



ZB5AZ905



ZBE101



ZBVB*



ZB5AZ009

Electrical Blocks and Accessories (for mounting on metal plate at back of enclosure) ■

Description	Type	Color	Catalog Number
Electrical blocks with screw clamp terminal connections			
Standard contact blocks ■	N/O contact	–	ZENL1111
	N/C contact	–	ZENL1121
Light blocks with protected LED Protected LED	24 Vac or Vdc	White	ZALVB1
		Green	ZALVB3
		Red	ZALVB4
		Yellow	ZALVB5
		Blue	ZALVB6
		120 Vac	White
		Green	ZALVG3
		Red	ZALVG4
		Yellow	ZALVG5
		Blue	ZALVG6
	230 Vac	White	ZALVM1
		Green	ZALVM3
		Red	ZALVM4
		Yellow	ZALVM5
		Blue	ZALVM6

Description	Application	Catalog Number
Accessories for electrical blocks		
Blanking plug	Ø 22 mm units	ZB5SZ3
Nut	Head mounting	ZB5AZ901
Grounding terminal	Grounding	XALZ09
Key	For tightening nut ZB5AZ901	ZB5AZ905

Electrical Blocks (for mounting directly beneath the heads)

Description	Type	Color	Catalog Number
Electrical blocks with screw clamp terminal connections (for mounting on base ZB5AZ009)			
Standard contact blocks ▲	N/O contact	–	ZBE101
	N/O contact	–	ZBE102
Light blocks with protected LED Protected LED	24 Vac or Vdc	White	ZBVB1
		Green	ZBVB3
		Red	ZBVB4
		Yellow	ZBVB5
		Blue	ZBVB6
		110-120 Vac	White
		Green	ZBVG3
		Red	ZBVG4
		Yellow	ZBVG5
		Blue	ZBVG6
	230-240 Vac	White	ZBVM1
		Green	ZBVM3
		Red	ZBVM4
		Yellow	ZBVM5
		Blue	ZBVM6

Description	Application	Catalog Number
Accessories for electrical blocks		
Mounting base	Electrical blocks (contact or light module)	ZB5AZ009

- For customer assembly using XB5 operators, see Push Buttons - XB5 22 mm starting on page 73.
- ▲ A maximum of 3 electrical blocks may be fitted per associated head.