

MICRO SWITCH

FREERPORT ILLINOIS, U.S.A
A DIVISION OF HONEYWELL
FED. MFG. CODE 91929

ACTUATOR - SWITCH

CATALOG LISTING

JS - 151

FAA-PMA

JS-151

PAGE 1 OF 1

M

DRAWING NUMBER

ISSUE 7

REPLACES

RELEASE NO. PR-1925

19 NOV 98

JAF

CHECK

23 JUL 71

GLR

CHECK

23 JUL 71

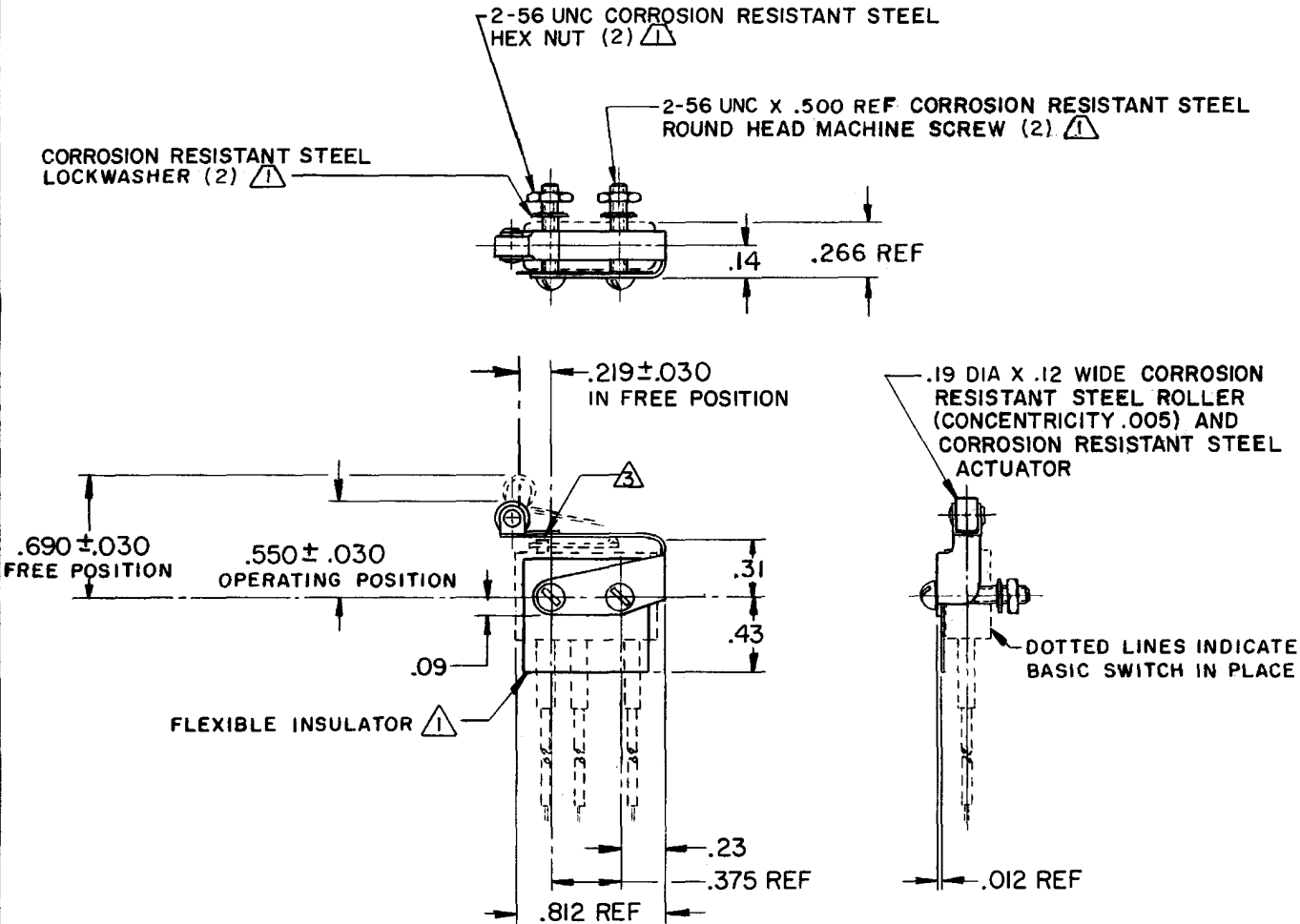
LSD

CHECK

16 JUL 71

OMW

DRAWN



NOTES

- Δ FURNISHED UNASSEMBLED
- Δ CHARACTERISTICS WITH 6HMI-1 BASIC SWITCH INSTALLED
- Δ ADJUSTMENT CAUTION: DO NOT ALLOW ACTUATOR LEAF TO COME IN CONTACT WITH HM LEVER TO PREVENT SWITCH SEAL DAMAGE

THIS DRAWING COVERS A PROPRIETARY ITEM AND IS THE PROPERTY OF MICRO SWITCH, A DIVISION OF HONEYWELL. THIS DRAWING IS NOT TO BE COPIED OR USED WITHOUT THE APPROVAL OF MICRO SWITCH.

CHARACTERISTICS Δ

OPERATING FORCE ----- 9 OZ MAX

RELEASE FORCE ----- 2 OZ MIN

DIFFERENTIAL TRAVEL ----- .030 MAX

OVERTRAVEL ----- .030 MIN

ELECTRICAL DATA

CONTACT ARRANGEMENT

SCALE FULL

DO NOT SCALE PRINT

UNLESS OTHERWISE NOTED

DIMENSIONS ARE IN INCHES

TOLERANCES ARE:

ONE PLACE	(.0)	\pm .030
TWO PLACE	(.00)	\pm .015
THREE PLACE	(.000)	\pm .005
ANGLES		\pm

WEIGHT

O-50378-1A

DRAWN

OMW