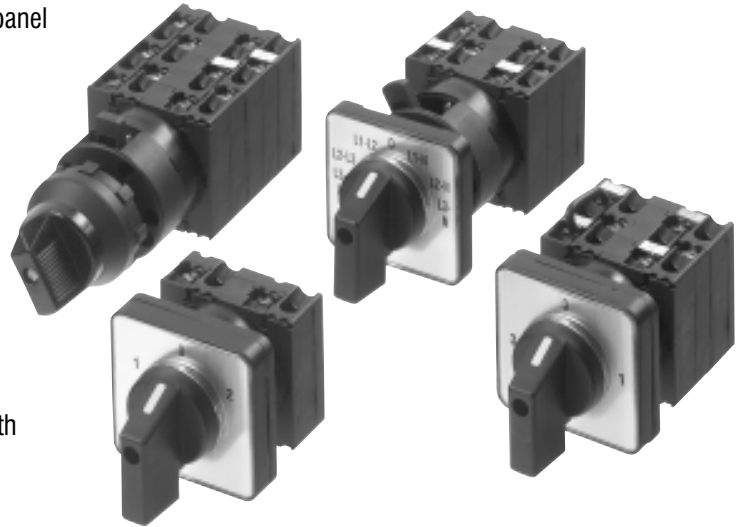


Rotary Cam Switch CS20A



Rotary Cam Switch with central fixing 22.5mm for panel mounting

- Range of rotary cam switches with a choice of 4 operators
- Key operators permit key removal in all latched positions
- Finger proof screw terminals to IP20 protection
- UL/GSA
- Designed to IEC 60947-3
- Single hole, front panel mounting
- Switch body supplied with legend plate for use with square escutcheon frame actuator



Options and ordering matrix

Handle operators

RB2 Round bezel



Key operators

RBK2 Round bezel



SP2 Square escutcheon



SPK2 Square escutcheon



Specification

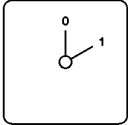
Rated thermal current I _{th}	A	20
Rated operational voltage U _e IEC/VDE/BS	V	690
Utilisation category AC21A, AC21B		
Rated operational current I _e	A	20
Utilisation category AC23B @ 400V	A	16
Utilisation category AC15	220/240V 380/440V	6A 4A
Cable cross section	mm ²	0.75-2.5
Contact material		Silver alloy
Mounting hole diameter		22.5mm
Maximum backup fuse (gl)		20A
Protection class from rear		IP20

Rotary Cam Switch CS20A continued



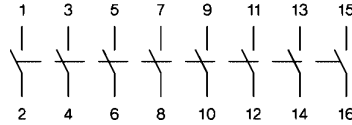
Options and ordering matrix continued

Off-On switch

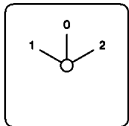


Description	Part Ref
1 Pole	CS20A-A1
2 Pole	CS20A-A2
3 Pole	CS20A-A3
4 Pole	CS20A-A4
6 Pole	CS20A-A6
8 Pole	CS20A-A8

Connection diameter

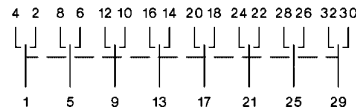


Change over switches, with off

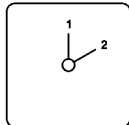


Description	Part Ref
1 Pole	CS20A-U1
2 Pole	CS20A-U2
3 Pole	CS20A-U3
4 Pole	CS20A-U4
6 Pole	CS20A-U6
8 Pole	CS20A-U8

Connection diameter

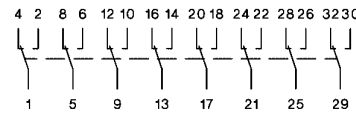


Change over switches, without off

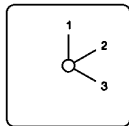


Description	Part Ref
1 Pole	CS20A-W1
2 Pole	CS20A-W2
3 Pole	CS20A-W3
4 Pole	CS20A-W4
6 Pole	CS20A-W6
8 Pole	CS20A-W8

Connection diameter

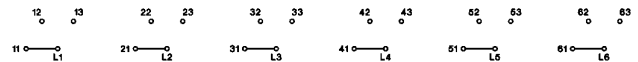


3 position step switches, without off

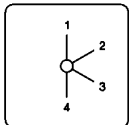


Description	Part Ref
1 Pole	CS20A-ST31
2 Pole	CS20A-ST32
3 Pole	CS20A-ST33
4 Pole	CS20A-ST34
6 Pole	CS20A-ST36

Connection diameter

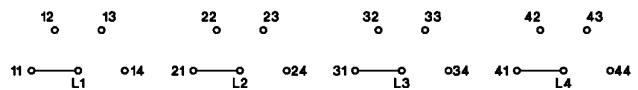


4 position step switches, without off

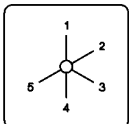


Description	Part Ref
1 Pole	CS20A-ST41
2 Pole	CS20A-ST42
3 Pole	CS20A-ST43
4 Pole	CS20A-ST44

Connection diameter

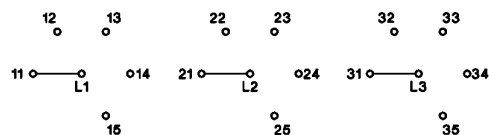


5 position step switches, without off

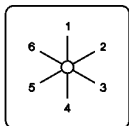


Description	Part Ref
1 Pole	CS20A-ST51
2 Pole	CS20A-ST52
3 Pole	CS20A-ST53

Connection diameter

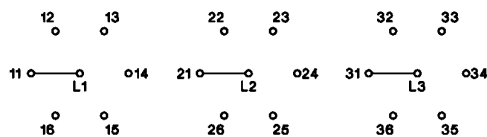


6 position step switches, without off



Description	Part Ref
1 Pole	CS20A-ST61
2 Pole	CS20A-ST62
3 Pole	CS20A-ST63

Connection diameter

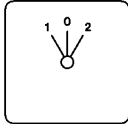


Rotary Cam Switch CS20A continued



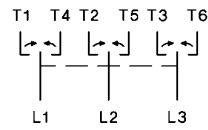
Options and ordering matrix continued

Change over switch with spring return to off

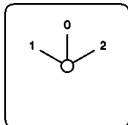


Description	Part Ref
1 Pole	CS20A-UR1
2 Pole	CS20A-UR2
3 Pole	CS20A-UR3

Connection diagram

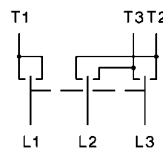


3 phase motor reversing switch

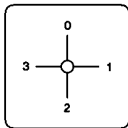


Description	Part Ref
5.5kW @ 380/440	CS20A-WU3

Connection diagram



3 current transformers



Description	Part Ref
1 Pole	CS20A-M31

Connection diagram

