

Spring Return Push Button Switches 0.5A 250Vac

Self-Wiping-Slow Make & Break

To create a 7 digit catalogue number:

Refer to the 4 columns below, shaded in grey, starting with "Terminal Code"

Examples of products with their 10 digit numbers are illustrated.

For other versions state the first 7 digits,

then describe in words:

Button colour.

All switches have μ contact gap.

0.5A 250Vac



T0916SO AAD



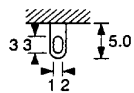
T0916LO AAA



T0916VA AAA

TERMINAL CODE

T



Solder tag

FUNCTION CODE

0916



Push for ON N/O
Black coloured base

0917



Change over
50 Volt only
Brown coloured base

0918



Push for OFF N/C
White coloured base

0919



Two Circuit
Black coloured base

0920



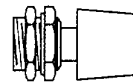
Push for ON N/O
Black coloured base

BUTTON CODE

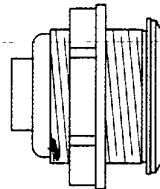
S Small button



L Large button



V Vandal resistant



BODY CODE

Panel cut-outs

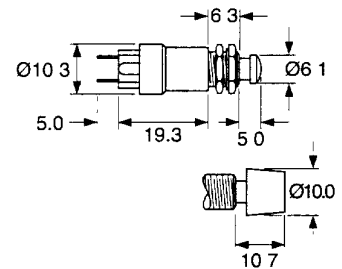
O



A



DIMENSIONS



Fixing neck 7.04/6.95 dia.x
40 TPI Whit
Panel hole 7.1 dia.
Button travel 2.5 max
Panel thickness Both nuts 2.5mm
Less backnut 4.0mm

Materials

Body/button Nylon 66 (V is Steel)
Button colour Red, Green,
Black, White
Contacts Ag plated/Cu alloy
Gap μ

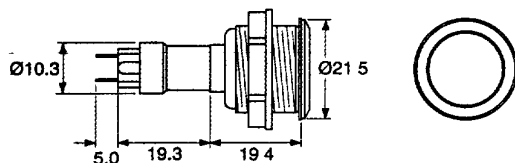
Properties

Operating force 600g nom.
Terminals Solder tags
Fixing Domed hex nut

Vandal Resistant Switch

Attractive low profile construction.

Rugged stainless steel button and body. Self wiping contacts-Slow make and break. Full internal and panel sealing to IP66.



DIMENSIONS

Fixing neck 18.95 dia. x 40 TPI Whit.
Panel Hole 19.2 mm dia
Button travel 2.5 max
Panel: Max thickness 8.0mm

Materials

Button/push Stainless steel
Fixing Threaded body & hex nut
Contacts Ag plated/Cu alloy (μ gap)

Properties

Operating pressure. 1000g approx.
Terminals Solder tags
Sealing To IP66