

MICRO SWITCH

A DIVISION OF HONEYWELL-CONTELL HONEYWELL COMPANY
MILWAUKEE, WISCONSIN

FED. MFR. CODE 91929

ACTUATOR - SWITCH

CATALOG LISTING

JV-30

(M) JV-30
ISSUE 2

REPLACES

RELEASE NO.

JV-30

DRAWING NUMBER

8

8

8

8

8

8

8

8

8

8

8

8

8

8

8

8

8

8

8

8

8

8

8

8

8

8

8

8

8

8

8

8

8

8

8

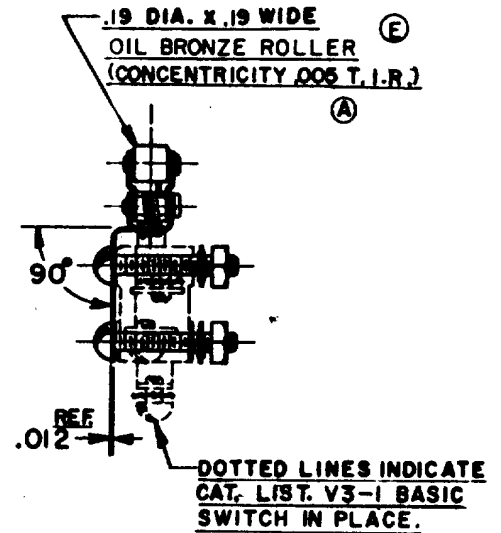
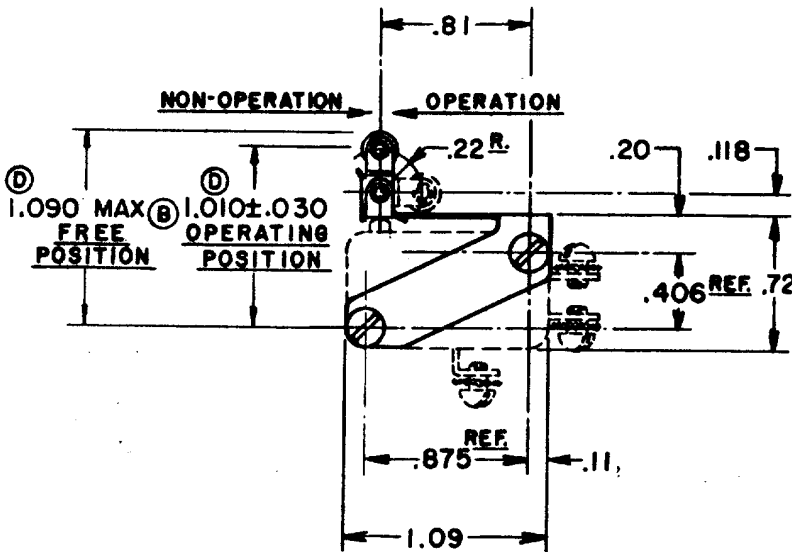
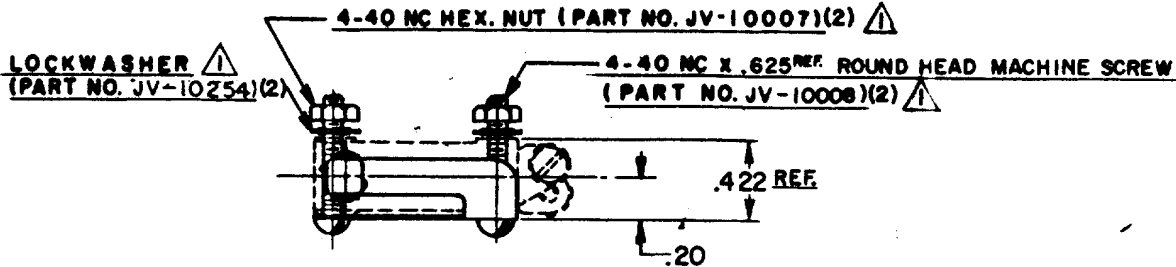
8

8

8

8

8



NOTE -

Δ - FURNISHED UNASSEMBLED.

\textcircled{C} 2 - ACTUATOR NOT SATISFACTORY FOR USE ON V3-600 AND 700 SERIES SWITCHES

THIS DRAWING COVERS A PROPRIETARY ITEM AND IS THE PROPERTY OF MICRO SWITCH, A DIVISION OF HONEYWELL. THIS DRAWING IS NOT TO BE COPIED OR USED WITHOUT THE APPROVAL OF MICRO SWITCH.

CHARACTERISTICS WITH V3-1 BASIC SWITCH INSTALLED	
OPERATING FORCE	18 0Z MAX
RELEASE FORCE	6 0Z MIN
PRETRAVEL	.080 MAX
DIFFERENTIAL TRAVEL	.015 MAX
OVERTRAVEL	.020 MIN

ELECTRICAL DATA

CONTACT ARRANGEMENT

BREAK DISTANCE

SCALE FULL

DO NOT SCALE PRINT

UNLESS OTHERWISE SPECIFIED DIMENSIONS ARE IN INCHES

TOLERANCES ARE:

ONE PLACE	(.0)	\pm .000
TWO PLACE	(.00)	\pm .018
THREE PLACE	(.000)	\pm .008
ANGLES		\pm 2°

WEIGHT

CHECK C.A.T. 11 MAY 56

CHECK B.L.S. 10 MAY 56

CHECK P.L.Z. 17 MAY 56

REVISIONS

A	CO 10437	R.E.R.	7 MAY 56
B	CO 3739	L.S.D.	10 JUNE 59
C	CO 18664	R.L.B.	18 FEB 61
D	CO 17810	M.B.F.	29 FEB 64
E	CO 27326	O.M.W.	10 JUN 70
F	CO 34626	R.E.R.	7 FEB 75

74-98