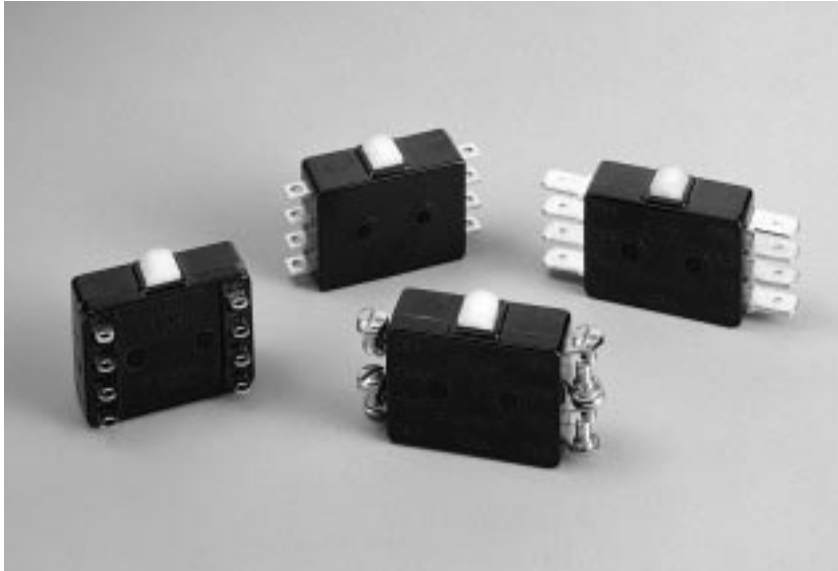


Type 22 – Miniature, 10 Amp, Double-Break



Typical Applications

- Pressure control sensors
- Pendant controls
- Door openers for transit equipment
- Valve actuators
- Lift trucks



actual size

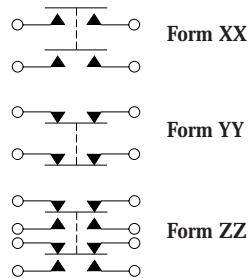


Features

- Contains two individual switching elements which function simultaneously (within .004" of plunger travel)
- Fine silver contacts are standard; Gold-plated contacts also available
- Wide variety of terminals and actuators
- Approval: UL

Mechanical Characteristics

- Pretravel: .060 max
- Overtravel: .015 min
- Operating Force: 17 ± 5 oz
- Release Force: 4 oz min
- Movement Differential: .030 ± .009
- Operating Point: .505 ± .011 (from mounting holes)



Ordering Information

| Part Number | Circuit | Terminals |
|-------------|-------------------|-----------------------|
| 22-104 | DPDT-DB (Form ZZ) | End Solder |
| 22-204 | DPDT-DB (Form ZZ) | #4 Screw |
| 22-304 | DPDT-DB (Form ZZ) | Side Solder |
| 22-504 | DPDT-DB (Form ZZ) | Quick Disconnect .250 |

Actuators – Mechanical Characteristics

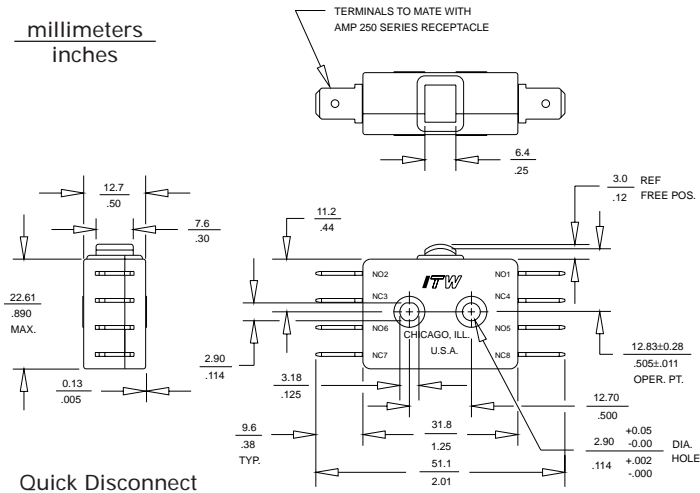
| Part No. | Actuator | Operating Force | Release Force | Pre-Travel | Over-Travel | Movement Differential | Operating Point |
|----------|-------------------------|-----------------|---------------|------------|-------------|-----------------------|-----------------|
| 72-1160 | Roller Lever (1) | 10 oz max | 1.5 oz min | .150 max | .035 min | .070 ± 015 | 1.000 ± 031 |
| 72-2080 | Over Travel (2) Plunger | 17 ± 5 oz | 4 oz min | .060 max | .215 min | .030 ± 007 | .828 ± 031 |
| 72-2150 | Roller Plunger | 17 ± 5 oz | 4 oz min | .060 max | .140 min | .028 ± 007 | 1.296 ± 031 |

(1) when used with 22-104 Basic Switch or 22-204 Basic Switch
 (2) when used with 22-304 Basic Switch

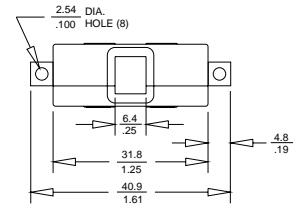


actual size

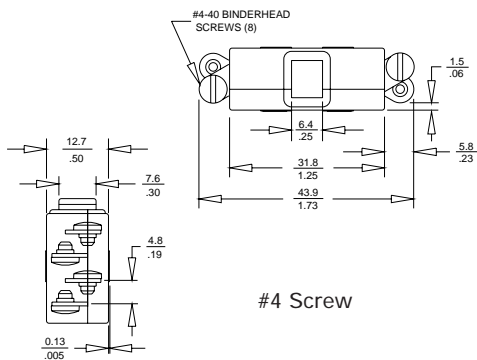
millimeters
inches



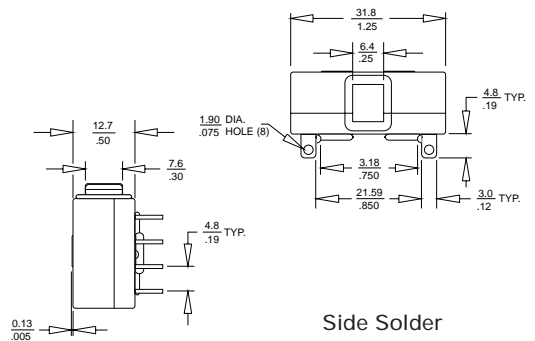
Quick Disconnect



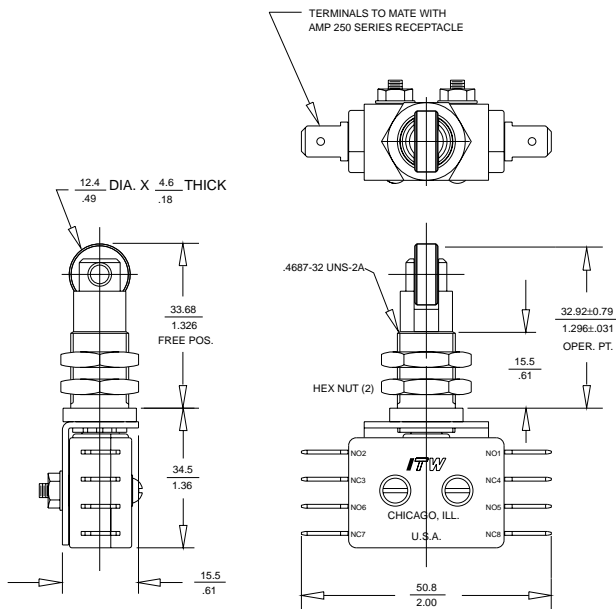
End Solder



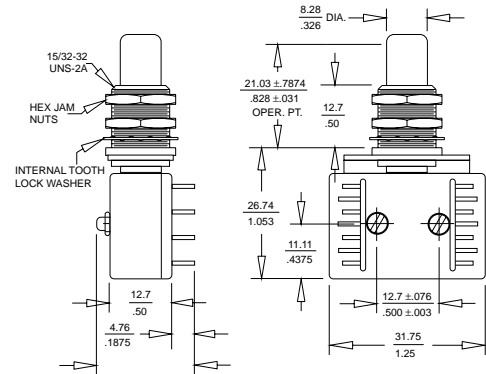
#4 Screw



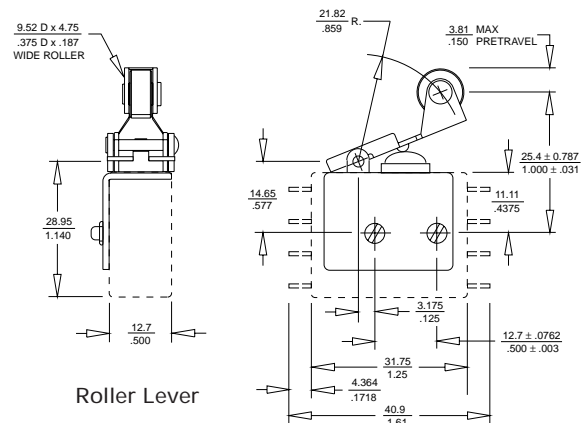
Side Solder



Roller Plunger



Over Travel Plunger



Roller Lever

Electrical Characteristics

| Circuitry | 125/250 VAC | 28 VDC |
|----------------------------------|------------------------------------|--------------------------|
| DPST-DB NO or NC (Form XX or YY) | 10 amp (75-80% PF) ½ HP 125 VAC | 15 amp Res 10 amp Ind |
| DPDT-DB (Form ZZ) | ¾ HP 250 VAC | 7 amp Ind 10 amp Res |

1-800-544-3354