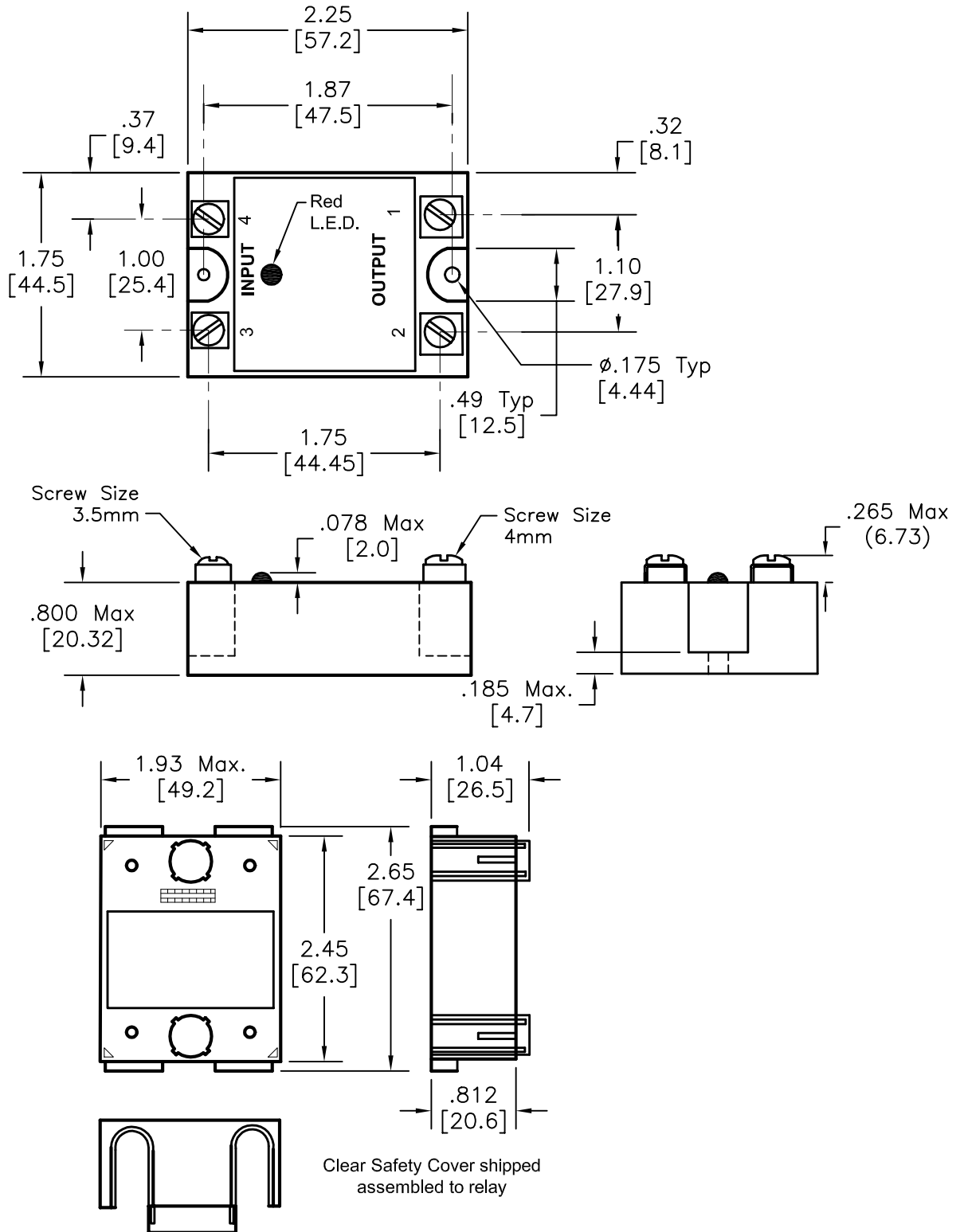


DCP #	REV	DESCRIPTION	DRAWN	DATE	CHECKD	DATE	APPRVD	DATE
844	A	RELEASED	JWM	9/16/02	HO	9/17/02	DJC	9/17/02



SPC-F004.DWG

TOLERANCES: Tolerances Unless Otherwise Specified: Decimal=±.005 Fractional=±.010	DRAWN BY: Jeff McVicker	DATE: 9/16/02	DRAWING TITLE: Solid State Relay, 25 Amps, SPST-NO			
	CHECKED BY: Hisham Odish	DATE: 9/17/02	SIZE A	DWG. NO. SPC9681	ELECTRONIC FILE 95B0426.dwg	REV A
	APPROVED BY: Daniel Carey	DATE: 9/17/02	SCALE: NTS	U.O.M.: INCHES [mm]	SHEET: 1 OF 2	

ALL RIGHTS RESERVED. NO PORTION OF THIS PUBLICATION, WHETHER IN WHOLE OR IN PART CAN BE REPRODUCED WITHOUT THE EXPRESS WRITTEN CONSENT OF SPC TECHNOLOGY. DISCLAIMER: ALL STATEMENTS AND TECHNICAL INFORMATION CONTAINED HEREIN ARE BASED UPON INFORMATION AND/OR TESTS WE BELIEVE TO BE ACCURATE AND RELIABLE. SINCE CONDITIONS OF USE ARE BEYOND OUR CONTROL, THE USER SHALL DETERMINE THE SUITABILITY OF THE PRODUCT FOR THE INTENDED USE AND ASSUME ALL RISK AND LIABILITY WHATSOEVER IN CONNECTION THEREWITH.

SPECIFICATIONS

INPUT CHARACTERISTICS

Input Voltage Range: 3 ~ 32 VDC
Must Released Voltage: 1VDC
Nominal Input Impedance: Current Regulator
Typical Input Current @ 5VDC: 16mA
Reverse Polarity Protection: Yes

OUTPUT CHARACTERISTICS

Switching Device: SCR (2)
Switching Type: Zero Cross
Switching Configuration: SPST-NO
Load Voltage Range: 40 ~ 280 Vrms
Maximum Rate of Rise Off State Voltage (dv/dt): 500V/ μ S
Rated Load Current (rms): 25 Amps
UL Incandescent Lamp Ampere Rating: 16 Amps
UL Motor Load Rating: 8 Amps
Min. Load Current to Maintain On: 120 milliamps
Non-repetitive Surge Current (1 cycle): 250 Amps
Max. RMS Overload Current (1 second): 40 Amps
Max. Offstate Leakage Current (rms): 10 milliamps
Typical On State Voltage Drop (rms): 1.6 VAC
Max. On State Voltage Drop (rms): 1.6 VAC
Maximum Turn-On Time: 1/2 Cycle
Maximum turn-Off Time: 1/2 Cycle
Maximum I²T for Fusing (A²Sec): 250 Amps

MISCELLANEOUS CHARACTERISTICS

Therm Resistance Junct to case (T_J, = 155°) °C/W: 1.02
Suggested Heat Sink °C/W: 0.5
Dielectric Strength: 4000V RMS
Insulation Resistance: 10¹⁰ Ohms
Operating Temp. Range: -40°C ~ +80°C
Storage Temperature Range: -40°C ~ +100°C
Weight: 100g
Case Color: Gray

ALL RIGHTS RESERVED. NO PORTION OF THIS PUBLICATION, WHETHER IN WHOLE OR IN PART CAN BE REPRODUCED WITHOUT THE EXPRESS WRITTEN CONSENT OF SPC TECHNOLOGY. SPC-F004.DWG	SIZE	DWG. NO.	ELECTRONIC FILE	REV
	A	SPC9681	95B0426.dwg	A
DOC. NO. SPC-F004 * Effective: 7/8/02 * DCP No: 1398	SCALE: NTS	U.O.M.: INCHES [mm]	SHEET: 2 OF 2	