

Magnecraft

191 Waukegan Rd, Ste 206

Northfield, IL 60093-2743

Phone: (847)441-2526

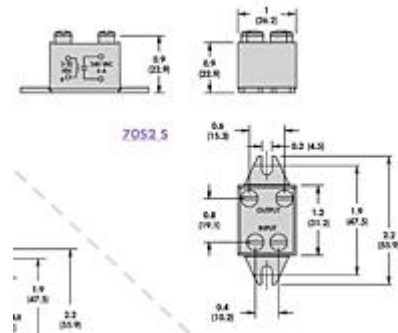
Fax: (847)441-2522

Email: info@magnecraft.com

Item # 70S2-04-B-12-S, 70S2 Series Solid State Relays/N and S Style

70S2 Series Solid State Relays/N and S Style

The 70S2 Series relays have excellent thermal performance and are designed for medium-power loads. Its compact size makes it ideal for designs where space is limited. The design incorporates a triac output for AC loads and MOSFETs for DC loads. Optical isolation protects the control from transients. The 70S2 is available in a combination of screw, fast-on or PCB terminals.



[SPECIFICATIONS](#) · [OUTPUT CHARACTERISTICS](#) · [INPUT CHARACTERISTICS](#) · [PERFORMANCE CHARACTERISTICS](#) · [ENVIRONMENT](#) · [MISCELLANEOUS CHARACTERISTICS](#)

SPECIFICATIONS

Component Type	Solid State
Mounting Type	Panel
Rated Current Load	12 A
Contact Configuration	SPST-NO
Control Voltage	DC
Load Type	DC
Input Voltage Range	3 to 30 VDC
Output Voltage Range	24 to 140 VAC
Switching Type	Zero Cross

OUTPUT CHARACTERISTICS

Switching Device	Triac
Current Rating	12 A
Switching Voltage	24 to 140 VAC
Maximum Rate of Rise Off State Voltage [dv/dt]	300 V/us
Min. Load Current to Maintain On	75 / 100 mA
Non-Repetitive Surge Current (1 cycle)	60 / 150 A
Max. Off State Leakage Current [rms]	6 mA
Minimum Peak Blocking Voltage	400 VAC
Typical On State Voltage Drop [rms]	1.6 VAC

INPUT CHARACTERISTICS

Voltage Range	3 to 30 VDC
Must Release Voltage	1 VDC
Typical Input Current at 5VDC or 240VAC	7 to 16 mA
Maximum Reverse Control Voltage	3 VDC

PERFORMANCE CHARACTERISTICS

Electrical Life (UL508), Operations at Rated Current (Resistive)	100000
Mechanical Life, Unpowered	10000000
Operating Time (Response Time) - On	8.3 ms μs
Operating Time (Response Time) - Off	8.3 ms μs
Dielectric Strength, Terminals to Chassis	3000 VAC

ENVIRONMENT

Product Certifications, Standard Version	CSA UR
Ambient Air Temperature around the Device - Storage	-40 to +125 °C
Ambient Air Temperature around the Device - Operation	-40 to +100 °C

MISCELLANEOUS CHARACTERISTICS

Thermal Resistance (Junction to Case)	4 °C/W
---------------------------------------	--------
