

Ledex® C Frame Size C8 — DC Operation

Part Number: C8 - **XXX** - M-36

All catalog products manufactured after April 1, 2006 are RoHS Compliant

Select from performance chart below

Specifications

Operation	Pull
Dielectric Strength	500 VRMS for one second
Continuous Duty Cycle	100% at 20°C ambient temperature
Intermittent Duty Cycle	See below
Holding Force	2.24 lbs (9.96 N) at 20°C
Coil Insulation	Class "A": 105°C max. temperature standard. Other temperature classes are available
Coil Termination	3/16" QC
Plunger Weight	0.4 oz. (11.3 g)
Total Weight	1.6 oz. (45.4 g)
Dimensions	See page H45

● Well-suited for battery operation.



See the "Battery Operated Solenoids" section for complete information.

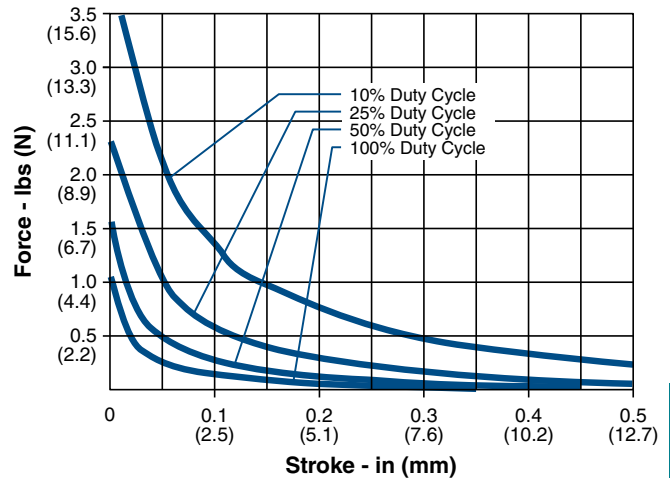
Performance

Maximum Duty Cycle	100%	50%	25%	10%
Maximum ON Time (sec) when pulsed continuously	∞	19	9	3
Maximum ON Time (sec) for single pulse	∞	286	92	27
Watts (@ 20°C)	3.6	7	14	35
Ampere Turns (@ 20°C)	464	657	929	1470

Coil Data

Part Number	Resistance (@20°C)	Ref # Turns	VDC (Nom)	VDC (Nom)	VDC (Nom)	VDC (Nom)
C8-276-M-36	2.56	404	3	4.2	5.9	9.3
C8-273-M-36	9.30	752	6	8.5	12	19
C8-274-M-36	23.2	1252	9	12.7	18	28.5
C8-272-M-36	37.12	1484	12	17	24	38
C8-271-M-36	150.73	2736	24	34	48	76
C8-270-M-36	621.54	5544	48	68	96	152
C8-269-M-36	3824	15035	120	164	231	366

Typical Force @ 20°C



How to Order

Select the part number from the table provided. (For example, to order a 25% duty cycle unit rated at 48 VDC, specify C8-271-M-36.

Please see www.ledex.com (click on Stock Products tab) for our list of stock products available through our North American distributors.

NOTES:

- All data is typical.
- Force testing is done with the solenoid in the horizontal position.
- All data reflects operation with no heatsink.
- Magnetic latching versions available.
- Pull versions standard; push versions available.
- Other coil terminations available.

Force values for reference only.

All specifications subject to change without notice.

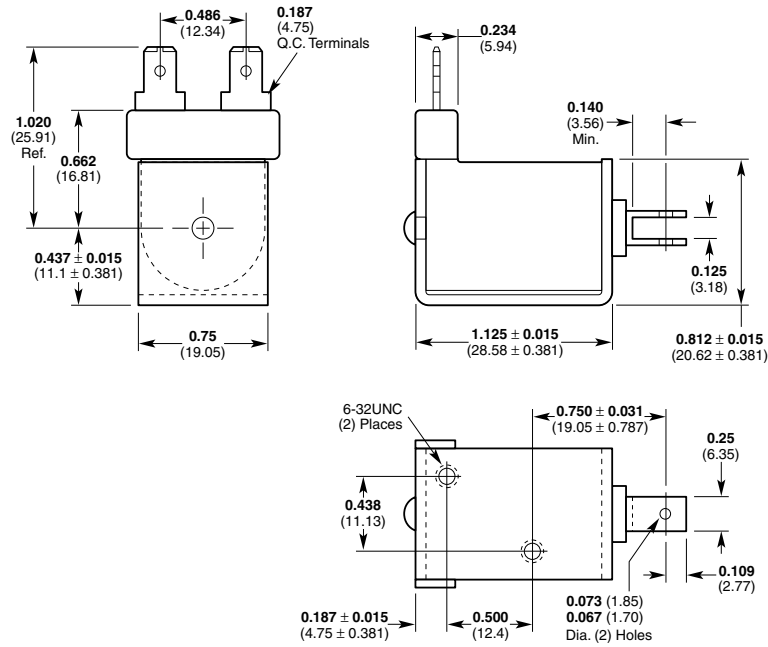
LINEAR Open Frame

Ledex® C Frame Dimensions

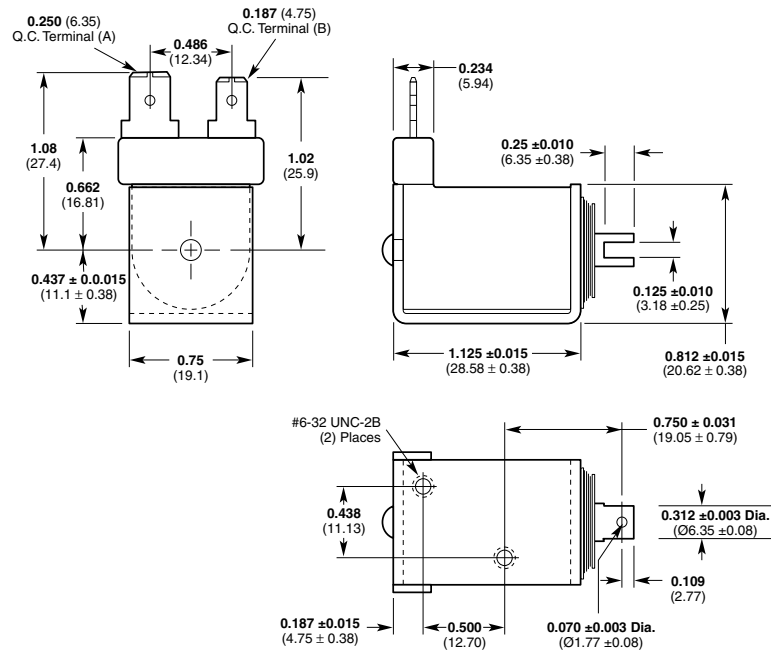
Inches (mm)

All solenoids are illustrated in energized state

C8



C8-L



LINEAR Open Frame

All specifications subject to change without notice.