



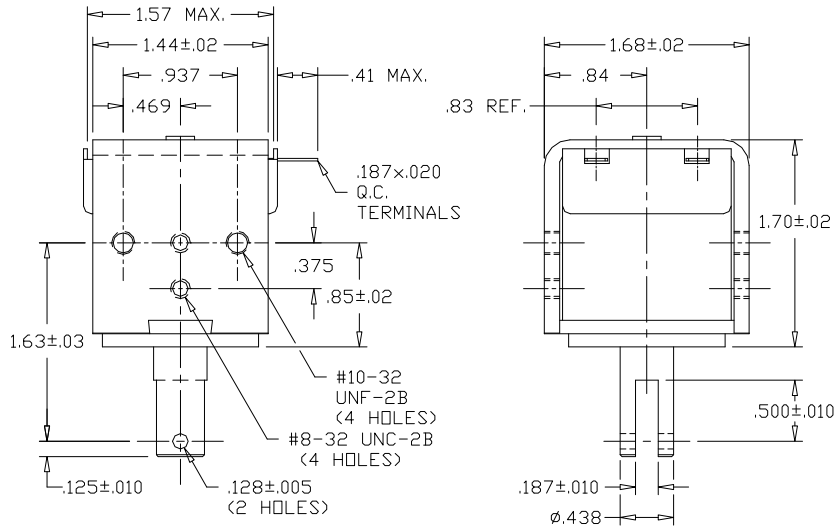
# GUARDIAN Electric Manufacturing

ISO 9001 / AS9100 Certified Company

Woodstock, IL 60098 Ph. (815)334-3600 Fax (815)337-0377

Or visit us at our website [www.guardian-electric.com](http://www.guardian-electric.com)

## Model 2HD AC Frame Solenoid



Solenoid shown energized and fully seated.

Spring kits are available (consult factory).

Total Weight: 13.0 oz.

Plunger Weight: 1.5 oz.


Model No.	Part No.	Duty Cycle	Volts	Res. (Ω)	Power (VA)	Current, Seated (mA)
2HD-I-120A	A420-065487-00	*Intermittent	120	42	66	550
2HD-C-120A	A420-065486-00	Continuous	120	101	16.5	138
2HD-I-240A	A420-065489-00	*Intermittent	240	140	66	275
2HD-C-240A	A420-065488-00	Continuous	240	404	16.5	69

When ordering, please refer to Part No., as listed above.

Consult factory for custom configurations.

Stroke (in.)	Pull Force (oz.)							Holding Force (oz.)
	0.125	0.250	0.375	0.500	0.625	0.750	1.000	
Continuous Duty	26	22	20	18	14	9	n/a	55
*Intermittent Duty	64	52	48	40	32	20	n/a	70

### UL Recognition

Recognized under the  Component Recognition Program of **Underwriters Laboratories, Inc.**

### Continuous Duty

100% 'On' Time

### \*Intermittent Duty

25% 'On' Time, (300 Seconds 'On' Max.  
Followed By 900 Seconds 'Off' Min.)

### RoHS

These parts comply with **RoHS** Directive 2002/95/EC