



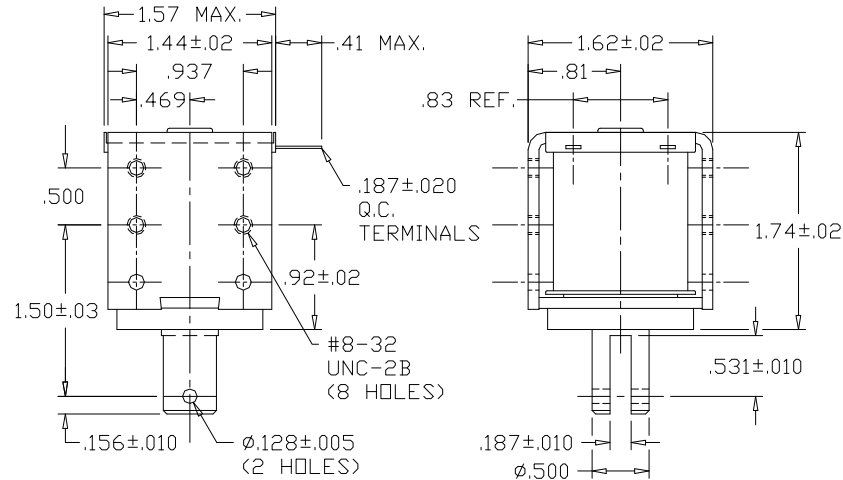
# GUARDIAN Electric Manufacturing

ISO 9001 / AS9100 Certified Company

Woodstock, IL 60098 Ph. (815)334-3600 Fax (815)337-0377

Or visit us at our website [www.guardian-electric.com](http://www.guardian-electric.com)

## Model 3HD DC Frame Solenoid



Solenoid shown energized and fully seated.

Spring kits are available (consult factory).

Total Weight: 10.70 oz.

Plunger Weight: 1.53 oz.


Model No.	Part No.	Duty Cycle	Voltage	Resistance (Ω)	Power (W)	Current
3HD-I-12D	A420-065923-00	Intermittent	12VDC	5.45	27.7	2.2 A
3HD-C-12D	A420-065922-00	Continuous	12VDC	16.7	9.1	719 mA
3HD-I-24D	A420-065925-00	Intermittent	24VDC	22.1	27.4	1.09 A
3HD-C-24D	A420-065924-00	Continuous	24VDC	65.8	9.2	365 mA

When ordering, please refer to Part No., as listed above.

Consult factory for custom configurations.

Stroke (in.)	Pull Force (oz.)								Holding Force (oz.)
	0.050	0.125	0.250	0.375	0.500	0.625	0.750	1.000	
Continuous Duty	115	55	20	10	8	4	2	1	145
Intermittent Duty	150	107	60	40	30	15	12	5	181

### UL Recognition

Recognized under the  Component Recognition Program of **Underwriters Laboratories, Inc.**

### Continuous Duty

100% 'On' Time

### Intermittent Duty

25% 'On' Time, (100 Seconds 'On' Max. Followed By 300 Seconds 'Off' Min.)

### RoHS

These parts comply with **RoHS** Directive 2002/95/EC