



Solving your relay requirements since 1922

Amperite Co.  
567 52nd Street  
P.O. Box 329  
West New York, NJ 07093  
(800) 752-2329  
www.Amperite.com

## DFWS Series Solid State AC & DC Flashers

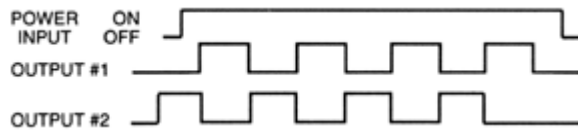


- ... 100% solid state circuitry - no moving parts
- ... Alternating output - drives two independent loads
- ... Zero AC voltage switching - no RFI
- ... 10 ampere current rating
- ... Suitable for incandescent and inductive loads
- ... Fixed flash rates from 1 to 1000 FPM
- ... Duty cycle 50%
- ... UL File pending
- ... CSA File pending

### Timing Mode:

On/off alternating solid state flasher with two independent output circuits. Flash rates are fixed and are available from 1 to 1000 flashes per minute (FPM). Duty cycle is 50%; other duty cycles available.

### Timing Diagram



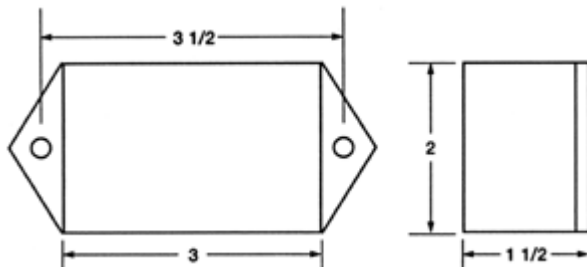
### Output Circuit:

Solid state switching device. Current rating 10 amperes RMS. Inrush current rating 10 times steady state value. Expected Life @ 25°C: indefinite, no moving parts to wear out.

### Environmental Information:

Operating & storage temperature range: -23°C to +60°C, (-10°F to +140°F)

### Outline Dimensions:





Solving your relay requirements since 1922

Amperite Co.  
567 52nd Street  
P.O. Box 329  
West New York, NJ 07093  
(800) 752-2329  
www.Amperite.com

### Mechanical Information:

Termination: .250 quick connect male terminals. Enclosure: 2 x 3 x 1-1/2 inch black plastic case, epoxy sealed. Two hole mounting. For full load operation the unit must be mounted to a suitable heat sink for proper heat dissipation.

### Timing Specifications:

Standard flash rates: 30, 45, 60, 75, 90 and 120 FPM. **Custom rates are available.**

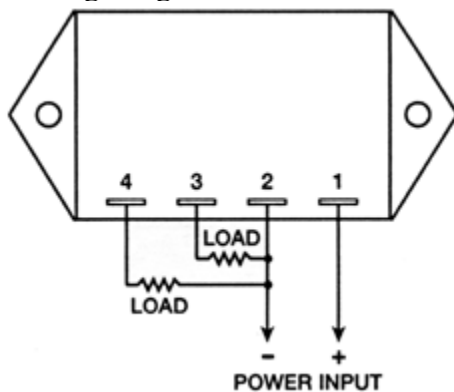
### Input Voltages:

12, 24, 48, 120, and 240 volts AC; 12, 24, 36, 48, and 110 volts DC. **Custom voltages are available.**

### Input Voltage Limits:

+/- 10% of nominal.

### Wiring Diagram:



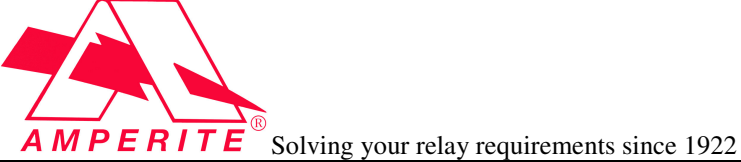
### Ordering Information:

Ordering Information: Definition of a part number for the Amperite DFWS Series

Alternating Flasher:

Example:

120 A F 60 DFWS  
↑ ↑ ↑ ↑ ↑  
A B C D E

	Amperite Co. 567 52nd Street P.O. Box 329 West New York, NJ 07093 (800) 752-2329 www.Amperite.com
---	--

**A:** Denotes nominal input voltage. Voltages available: 12, 24, 48, 120, and 240 volts AC; 12, 24, 36, 48, and 110 volts DC. For other voltages consult factory.

**B:** Denotes type of input power required for operation

A = AC - Alternate Current

D = DC - Direct Current

**C:** Insert F for flasher.

**D:** Denotes number of flashes per minute (FPM). Standard rates are 30, 45, 60, 75, 90, and 120 FPM. **Custom rates are available from 1 to 1000 FPM.**

**E:** Denotes Amperite DFWS Series solid state alternating flasher.

