

Power Relay RM 8

2 pole 25 A, DC- or AC-coil



Features

- 2 C/O contacts
- DC- or AC-coil
- Mechanical indicator
- Push-to-test-button
- Chassis- or DIN-rail mount

Applications

Cleaning equipment, heating and cooling equipment

F0165-A



Technical data of approved types on request

Contact data

Configuration	2 C/O contact
Type of contact	single contact
Rated current	25 A
Rated voltage / max.breaking voltage AC	250 Vac / 440 Vac
Maximum breaking capacity AC	6000 VA
Make current (max. 4 s at duty cycle 10%)	60 A
Contact material	AgCdO

Contact ratings

Type	Load	Standard
RM8	2hp, 240 Vac, per contact	UL 508
RM8	1.5hp, 120 Vac, per contact	UL 508
RM8	25 A, 240 Vac, per contact	UL 508

Coil data

Nominal voltage	DC coil	6...220 Vdc
	AC coil	6...400 Vac
Nominal coil power	DC coil	1.2 W
	AC coil	2.8 VA

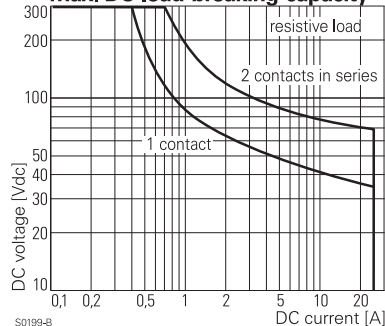
Coil versions, DC-coil, RM8

Coil code	LED	PD*	LED	Nominal voltage	Pull-in voltage	Release voltage	Coil resistance	Coil current
	bipolar		PD*	Vdc	Vdc	Vdc	Ω	mA
006	L06	0A6	LA6	6	4.5	0.6	32±10%	187.5
012	L12	0B2	LB2	12	9.0	1.2	110±10%	109.1
024	L24	0C4	LC4	24	18.0	2.4	475±10%	50.5
048	L48	0E8	LE8	48	36.0	4.8	2000±10%	24.0
060	L60	0G0	LG0	60	45.0	6.0	2850±10%	21.1
110	M10	1B0	MB0	110	82.5	11.0	10000±12%	11.0
221	N21	2C1	NC1	220	165.0	22.0	40000±15%	5.5

All figures are given for coil without preenergization, at ambient temperature +20°C

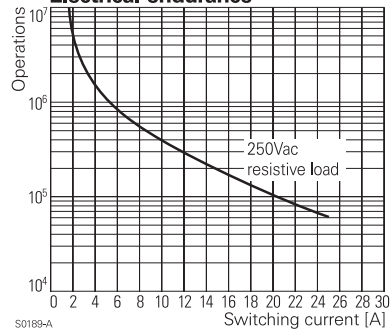
* Protection diode PD; standard polarity: +A1 / -A2

Max. DC load breaking capacity



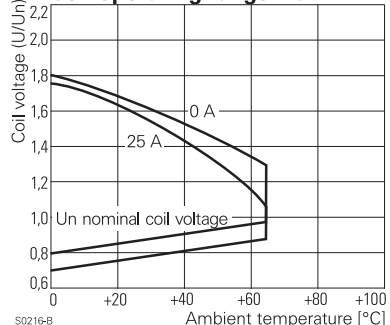
S0199-B

Electrical endurance



S0189-A

Coil operating range DC



S0216-B

Power Relay RM 8

2 pole 25 A, DC- or AC-coil

Coil versions, AC-coil, RM8

Coil code	LED	Nominal voltage Vac	Pull-in voltage Vac	Release voltage Vac	Coil resistance Ω	Coil current mA
506	R06	6	4.8	2.4	4.7±10%	476.7
512	R12	12	9.6	4.8	19.5±10%	225.8
524	R24	24	19.2	9.6	80±10%	109.2
548	R48	48	38.4	19.2	320±10%	54.2
560	R60	60	48.0	24.0	500±10%	43.7
615	S15	115	92.0	46.0	1850±10%	23.0
730	T30	230	184.0	92.0	7500±10%	11.7
900	V00	400	320.0	160.0	23500±15%	6.5

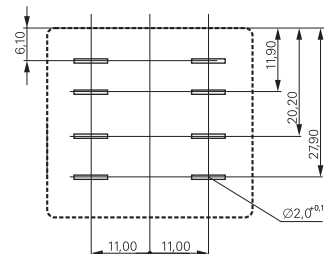
All figures are given for coil without preenergization, at ambient temperature +20°C

Insulation

Dielectric strength	coil-contacts	2500 V_{rms}
	open contact circuit	1500 V_{rms}
	adjacent contacts	4000 V_{rms}
Clearance / creepage		≥ 2.8 / 4 mm
Insulation to VDE 0110b (2/79)		
Insulation category / reference voltage		C / 250

Terminal assignment

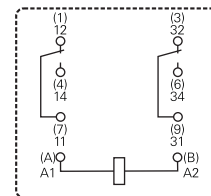
View on solder pins
Dimensions in mm



S0269-AG

Other data

Ambient temperature	DC-coil	-45...+65 °C
	AC-coil	-45...+40 °C
Mechanical life	>10x10 ⁶ operations	
Max. switching rate at rated- / minimum load	16 min ⁻¹ / 100 min ⁻¹	
Operate- / release time	approx. 15 / 15 ms	
Bounce time	approx. 3 ms	
Vibration resistance N/O / N/C contact	>10 / 5 g, 30...150 Hz	
Category of protection (IEC 61810)	RT I - dust protected	
Relay weight	81 g	
Packaging unit	10 / 25 pcs.	



S0269-AD

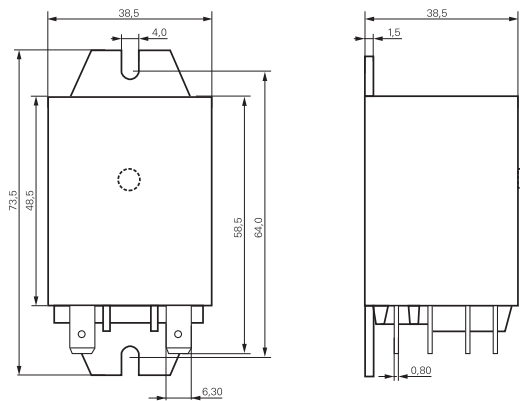
Power Relay RM 8

2 pole 25 A, DC- or AC-coil

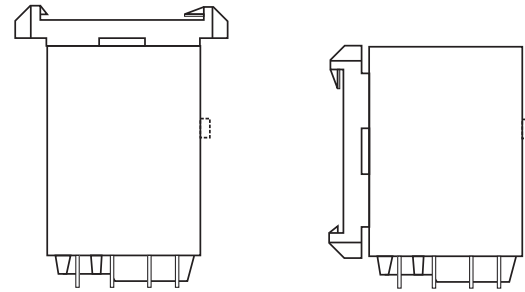
Dimensions

Dimensions in mm

Cover with mounting brackets, FASTON 250



Cover with DIN-snap-on attachment
horizontal vertical



S0298-AC

S0298-AD

S0298-AE

Product key

Type	R M	8			
Contacts	8 2 C/O contacts, 25 A				
Version	0 without test button		3 with test button		
Mounting	5 cover with mounting brackets, AMP-Faston 250 8 cover with DIN-snap-on attachment, horizontal, AMP-Faston 250 9 cover with DIN-snap-on attachment, vertical, AMP-Faston 250				
Coil	Coil code: please refer to coil versions table, preferred types in bold print				

AMP-Faston 250 = 6.3 x 0.8 mm

Product key	Contacts	Version	Enclosure	Coil	Coil	Part number
RM805024	2 C/O contacts 25 A	without test button	mounting brackets AMP 250	DC-coil	24 Vdc	2-1393844-7
RM805524				AC-coil	24 Vac	2-1393147-9
RM805615					115 Vac	3-1393147-1
RM805730					230 Vac	3-1393147-3
RM808024			DIN-snap-on horizontal	DC-coil	24 Vdc	2-1393844-9
RM808524				AC-coil	24 Vac	3-1393147-7
RM808730					230 Vac	5-1393149-7
RM809024			DIN-snap-on vertical	DC-coil	24 Vdc	5-1393149-8
RM809615				AC-coil	115 Vac	3-1393147-8
RM809730					230 Vac	3-1393147-9
RM835024	with test button		mounting brackets AMP 250	DC-coil	24 Vdc	4-1393147-1
RM835524				AC-coil	24 Vac	4-1393147-3
RM835615					115 Vac	4-1393147-4
RM835730					230 Vac	4-1393147-6
RM838024			DIN-snap-on horizontal	DC-coil	24 Vdc	4-1393147-8
RM838524				AC-coil	24 Vac	5-1393147-0
RM838730					230 Vac	5-1393147-1
RM839024			DIN-snap-on vertical	DC-coil	24 Vdc	5-1393147-4
RM839524				AC-coil	24 Vac	5-1393147-5
RM839730					230 Vac	5-1393147-6

Edition: 03/2002

Rights to change data / design reserved