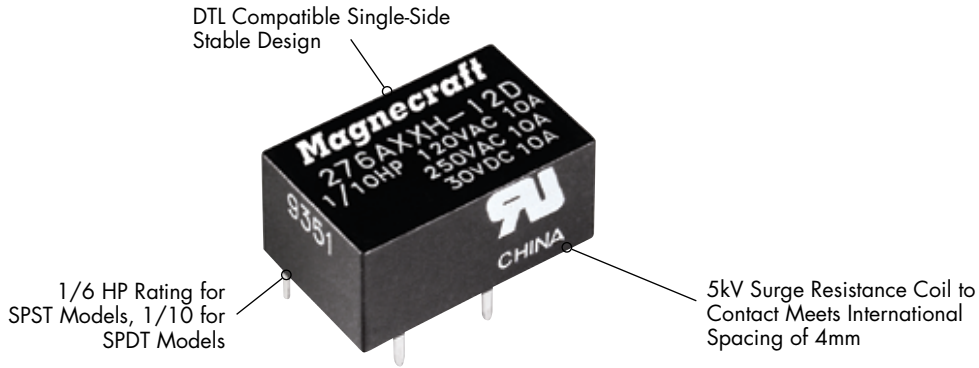
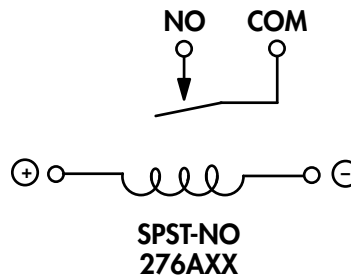
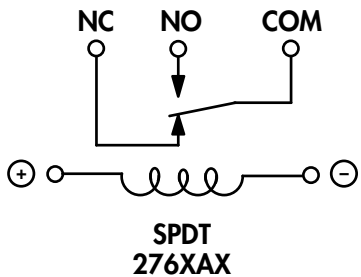


276 Low Profile PCB Mount Power Relay/SPST and SPDT 7 - 10 Amp Rated



General Specifications (UL 508)		276XAX	276AXX
Contact Characteristics		7 Amp	10 Amp
Number and type of Contacts		SPDT	SPST-NO
Contact materials		Silver Alloy	Silver Alloy
Current rating		7	10
Switching voltage		240 50/60 Hz	240 50/60 Hz
		30	30
		HP	HP
Minimum Switching Requirement	Minimum	1/10 @ 120VAC	1/6 @ 120VAC
		100 mA	100
Coil Characteristics			
Voltage Range		3...24	3...24
Operating Range		80% to 110%	80% to 110%
Average consumption	% of Nominal	0.2	0.2
Drop-out voltage threshold		10%	10%
Performance Characteristics			
Electrical Life	Operations @ Rated Current (Resistive)	100,000	100,000
Mechanical Life	Unpowered	5,000,000	5,000,000
Operating time (response time)		10 ms	10
Dielectric	Between coil and contact	2000 V	2000
	Between contacts	1000 V	1000
Environment			
Product certifications	Standard version	UL	UL
Ambient air temperature around the device	Storage	-40...+85 °C	-40...+85
	Operation	-40...+55 °C	-40...+55
Vibration resistance	Operational	3, 10-55 Hz g-n	3, 10-55 Hz
Shock resistance		20 g-n	20
Weight		5.5 grams	5.5

WIRING DIAGRAMS TOP VIEW





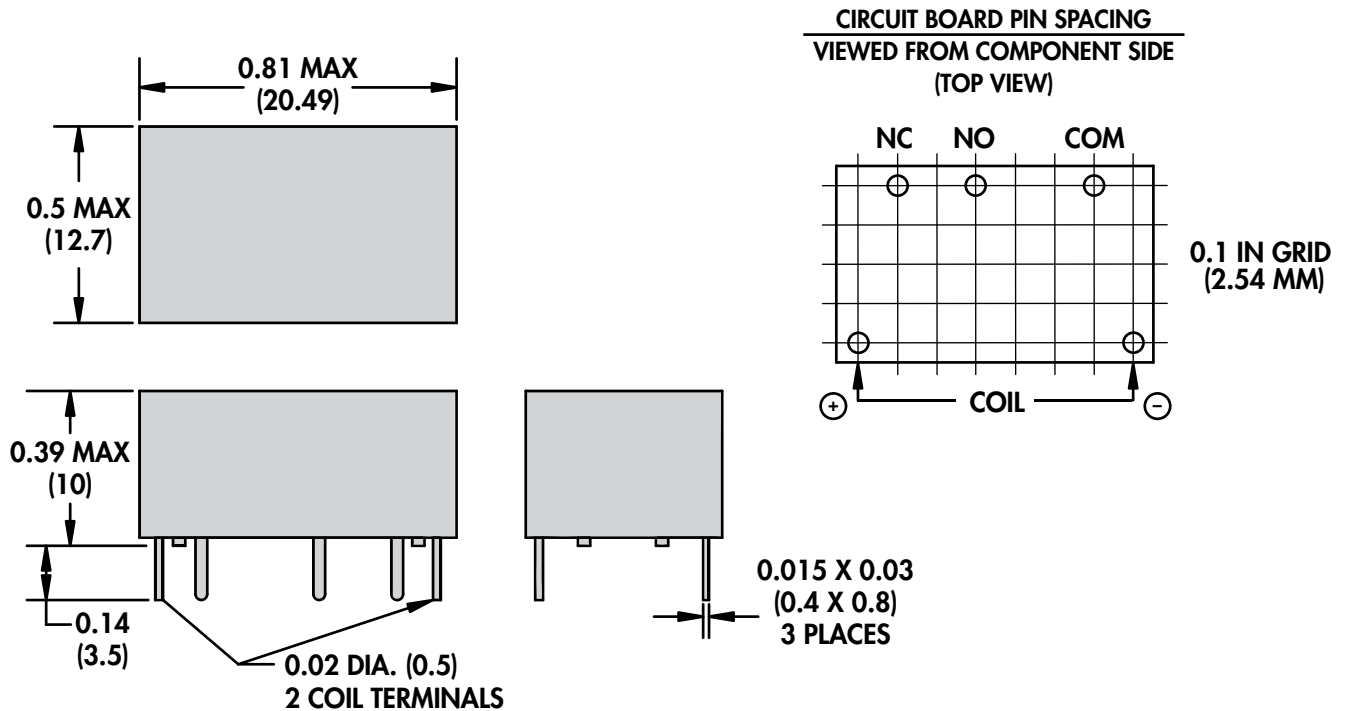
Standard Part Numbers

BOLD-FACED PART NUMBERS ARE NORMALLY STOCKED

Nominal Input Voltage	Nominal Coil Resistance (Ω)	Part Number	Contact Configuration
5 VDC	125 Ω	276AXXH-5D	SPST-NO
6 VDC	180 Ω	276AXXH-6D	SPST-NO
12 VDC	720 Ω	276AXXH-12D	SPST-NO
24 VDC	2880 Ω	276AXXH-24D	SPST-NO
5 VDC	125 Ω	276XAXH-5D	SPDT
6 VDC	180 Ω	276XAXH-6D	SPDT
12 VDC	720 Ω	276XAXH-12D	SPDT
24 VDC	2880 Ω	276XAXH-24D	SPDT

Part Number Builder

Series	Contact Configuration	Type of Seal	Coil Voltage	Current Type
276	AAX = SPST - NO XAX = SPDT	H = Epoxy Sealed	5 = 5VDC 6 = 6VDC 12 = 12VDC 24 = 24VDC	D = DC Coil



DRAWING AND PIN SPACING ENLARGED TO 200% OF ACTUAL SIZE