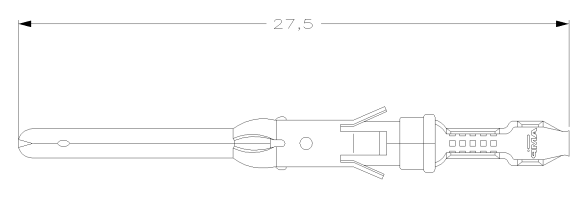
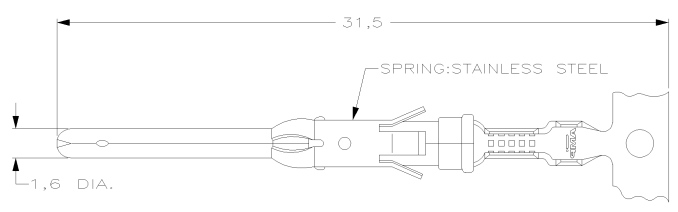


DO NOT SCALE
DIMENSIONS IN mm

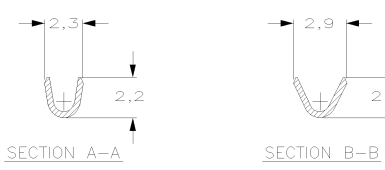
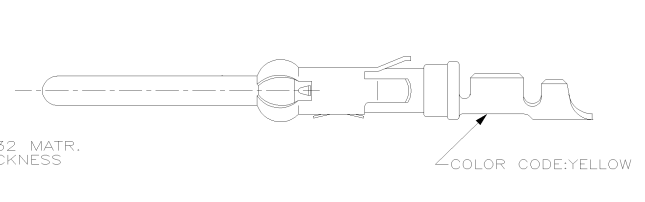
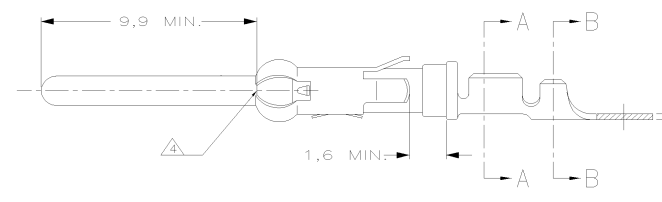
METRIC

THIRD ANGLE PROJECTION



STRIP

LOOSE-PIECE



WIRE RANGE : 0,20-0,50 mm (24-20 AWG)
INSUL. RANGE : 1,1 -1,8 mm (.045-.070)

- NOTES :
- 1 U.L.RECONIZED UNDER FILE E28476 VOL.VI SEC.1
 - 2 FOR CRIMPDETAILS SEE AMP-SPEC. 114-19.000 .
 - 3 MEETS PRODUCTSPECIFICATION 108-10042.
 - 4 0,40 MAX. GAP BETWEEN SPRING-NOSE AND CONTACT BODY.
 - 5 SPECIAL REEL WITH 200 PCS FOR REEL-FED HAND-TOOL
 - 6 OBSOLETE PARTS; OBSOLETE CIS STREAMLINING PER D.RENAUD/D.SINISI

NOTES	MATERIAL	THICKNESS	AREA
1	TIN	2,0 µm	ALL OVER
2	NICKEL		ALL OVER
3	GOLD	0,8 µm	CONTACT AREA
4	TIN		BARREL
5	NICKEL		ALL OVER
6	GOLD	0,8 µm	CONTACT AREA
7	TIN		ALL OVER
8	GOLD		ALL OVER
9	NICKEL		ALL OVER
10	GOLD	1,2 µm	CONTACT AREA
11	TIN		ALL OVER
12	SILVER	2,5 µm	CONTACT AREA
13	TIN		ALL OVER
14	SILVER	0,5 µm	ALL OVER
15	SILVER	2,5 µm	ALL OVER
16	NICKEL	1,27 µm	ALL OVER
17	BRIGHT TIN	1,27 µm	ALL OVER
18	LUBRICATED		

AMPOMATOR + MINI-APPL 107-3-FIG.1	107-3-FIG.2	107-3-FIG.4	PARTNUMBER	DIRECTION OF REEL	LOOSE-PIECE	MATERIAL	PLATING															
1-163085-4	1-163085-3	1-163085-2	1-163085-1	1-163085-0	1-163086-1	1-163086-3	1-163086-2	1-163086-1	BRASS	EL.TIN	BR. TIN	ECON.GOLD	SEL.GOLD	EL.TIN	GOLD	ECON.GOLD	ECON.GOLD	BRASS	EL.TIN	SEL.GOLD	SEL.GOLD	EL.TIN

AC	EBD0-0463-04	KK	AEG	09JAN10	RS	MG	13/12/04	DR.	CHK.	DATE	DR.	CHK.	DATE	DWG.No.	REV.LTR.	SHEET
AB	EBD0-0335-04	JMS	FWK	02/08/04	V	PB	SS	3	OCT	02	T	D.K.	R.V.	08	OCT	95
T	EH-1189-95	D.K.	R.V.	08	OCT	95	J.V.L.	M.V.D	03-05-94	NAME	S	ECN	H-9526	M.V.D	RD	06-02-92
LTR.	REVISION RECORD	DR.	CHK.	DATE	DR.	CHK.	DATE	163085	AC1	1	A3					



AMP HOLLAND B.V.
's-Hertogenbosch, The Netherlands.

TYPE_III_PIN_CONTACT
SIZE_16