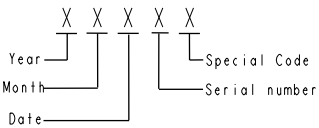
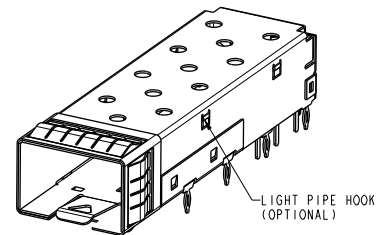
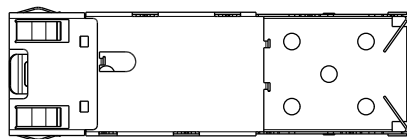
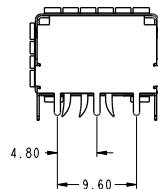
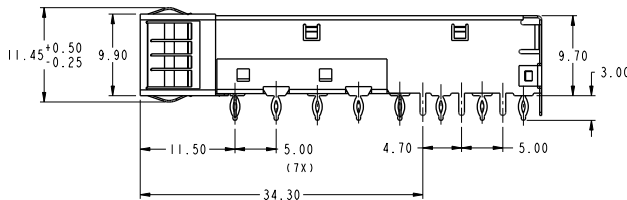
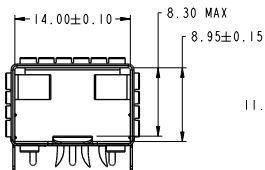
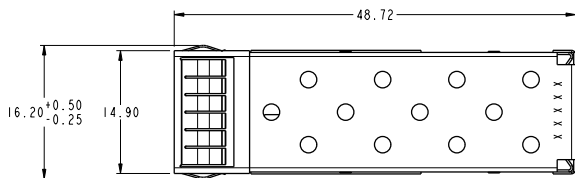


1	2	3	4	5	6	7	8
PRODUCT NUMBER	PACKAGING						
10099103-011LF	TRAY						

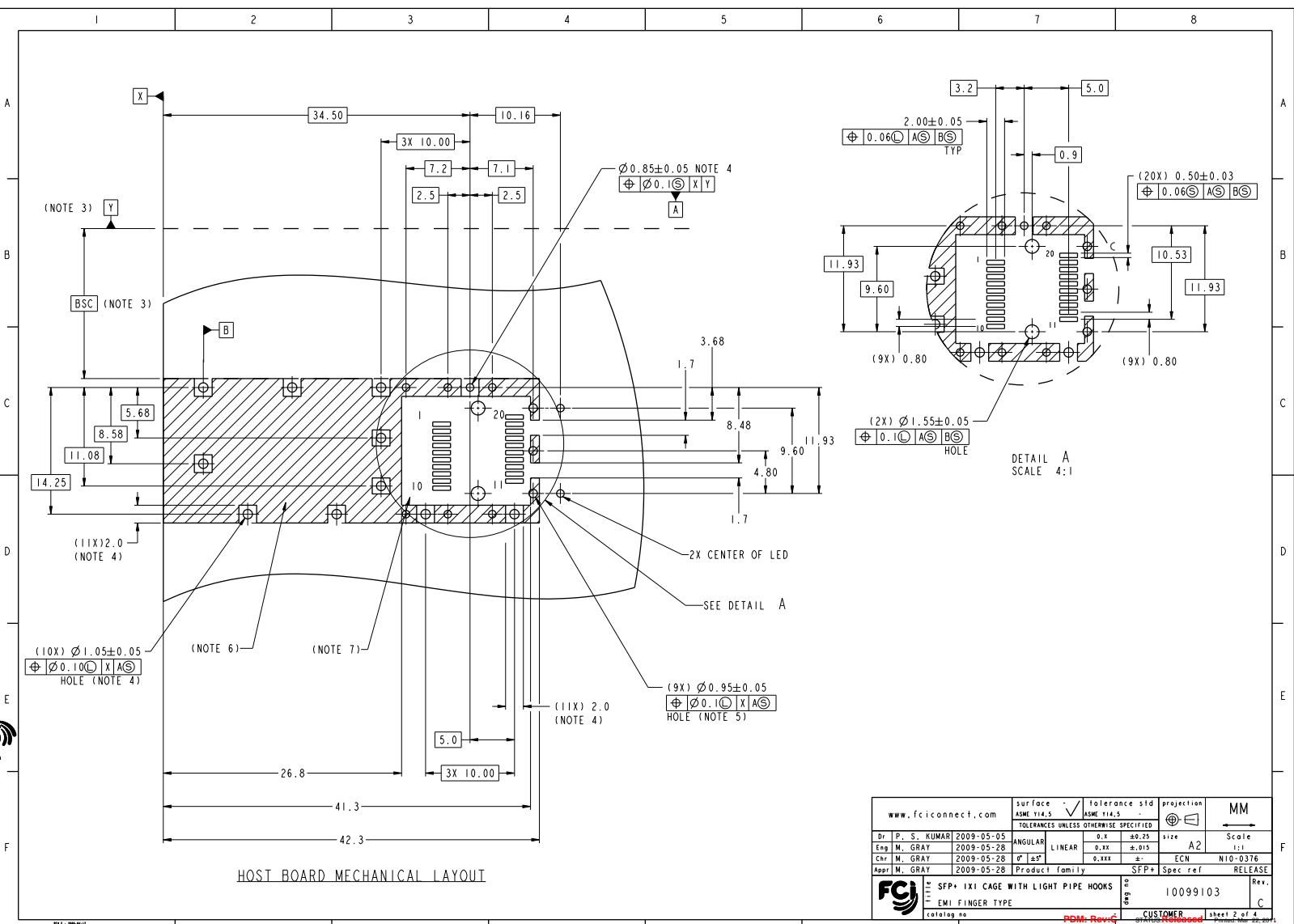
NOTES:

1. MATERIAL: COPPER ALLOY.
2. PLATING: CAGE BODY, 1.27µm(50u") MIN. NICKEL PLATING OVER ALL. EMI FINGER: 1.27µm(50u")MIN. SATIN TIN OR TIN/LEAD OVER 1.27µm(50u")MIN. NICKEL UNDERPLATING.
3. DATUM AND BASIC DIMENSIONS ARE ESTABLISHED BY CUSTOMER.
4. PADS AND VIAS ARE CHASSIS GROUND, 11 PLACES.
5. THROUGH HOLES, PLATING OPTIONAL.
6. CROSS-HATCHED AREA DENOTES COMPONENT AND TRACE KEEP-OUT (EXCEPT CHASSIS GROUND).
7. THIS AREA DENOTES COMPONENT KEEP-OUT (TRACES ALLOWED).
8. PRODUCT SPECIFICATION: GS-12-616
9. APPLICATION SPECIFICATION: GS-20-125
10. PRODUCT MEETS EUROPEAN UNION DIRECTIVES AND OTHER COUNTRY REGULATIONS AS DESCRIBED IN GS-22-008.
11. DATE CODE BE PRINTED ON PROPER SURFACE.
12. THE CAGE CAN BE ASSEMBLED WITH LIGHT PIPE KIT.
13. RECOMMENDED PANEL DESIGN LAYOUT OPTIONS:
 <1> PANEL DESIGN LAYOUT WITHOUT LIGHT PIPE KIT (SEE SHEET 3).
 <2> PANEL DESIGN LAYOUT WITH LIGHT PIPE KIT (SEE SHEET 4).
14. LIGHT PIPE REFER TO DRAWING NUMBER 10099106 FOR DIMENSIONAL INFORMATION.



DATE CODE DESCRIPTION

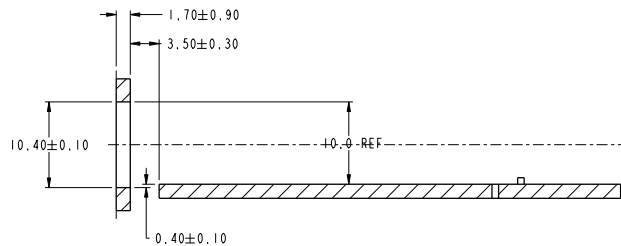
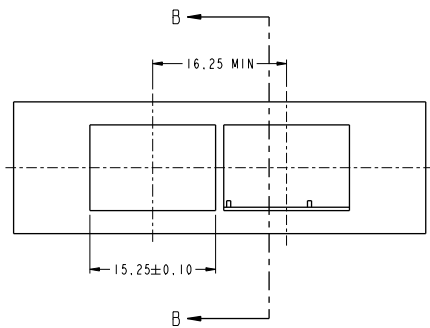
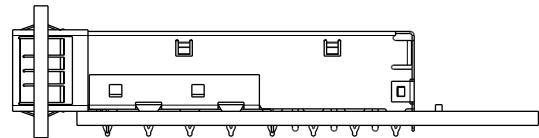
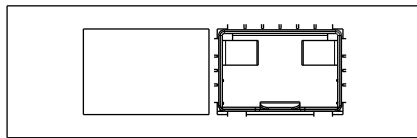
www.fciconnect.com		surface	tolerance std	projection	MM
		ASME Y14.5	ASME Y14.5		
TOLERANCES UNLESS OTHERWISE SPECIFIED					
ref	den no	dr	date	dir	P. S. KUMAR 2009-05-05
A	Y09-0442	S.M	2009-11-02	Eng	M. GRAY 2009-05-28
B	V10-0363	MIG	2010-10-15	Chr	M. GRAY 2009-05-28
C	N10-0376	AND	2010-11-25	Appr	M. GRAY 2009-05-28
				Product family	SFP4 Spec ref
				FCI	SFP4 1X1 CAGE With LIGHT PIPE HOOKS
				EMI FINGER TYPE	10099103
				customer	RELEASE
				Rev.	C
				sheet 1 of 4	



HOST BOARD MECHANICAL LAYOUT

www.fciconnect.com		surface ASME Y14.5	tolerance std ASME Y14.5	projection ASME Y14.5	MM
TOLERANCES UNLESS OTHERWISE SPECIFIED					
Dr. P. S. KUMAR	2009-05-05	ANGULAR	0.X	±0.25	size A2
Eng. M. GRAY	2009-05-28	LINEAR	0.XX	±0.05	Scale 1:1
Chr. M. GRAY	2009-05-28	Ø ±	0.XXX	±	ECN N10-0376
Appr. M. GRAY	2009-05-28	Product family	SFP#	Spec ref	RELEASE
FCI	SFP# IX1 CAGE WITH LIGHT PIPE HOOKS	10099103		Rev.	C
EMI FINGER TYPE	CUSTOMER	sheet 2 of 4	Released		

Copyright FCI.



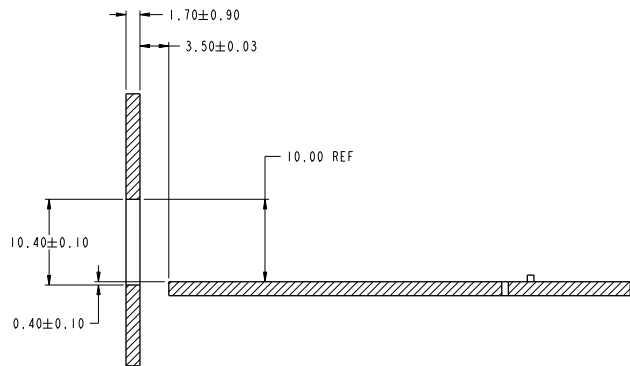
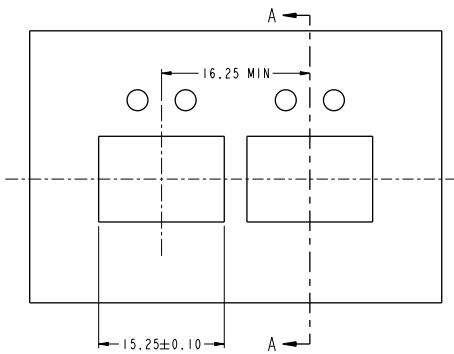
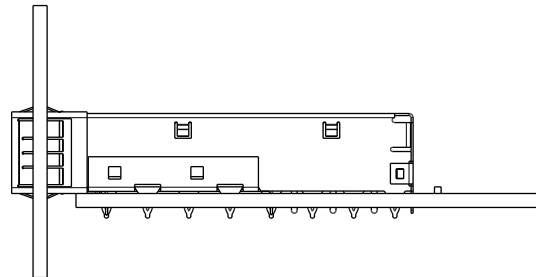
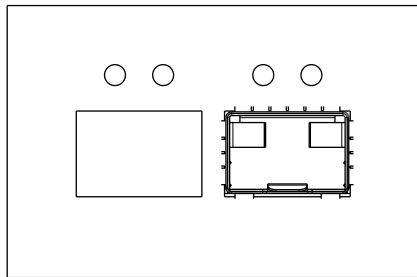
SECTION B-B

BEZEL OPENING
BELOW PC BOARD

RECOMMENDED PANEL DESIGN LAYOUT
WITHOUT LIGHT PIPE KIT

Copyright FCI

www.fciconnect.com		surface ASME Y14.5	tolerance std ASME Y14.5	projection	MM
TOLERANCES UNLESS OTHERWISE SPECIFIED		ANGULAR	LINEAR	size	Scale
Dr. P. S. KUMAR	2009-05-05	0.X	±0.25	A2	1:1
Eng. M. GRAY	2009-05-28	0.XX	±0.015	ECN	N10-0376
Chr. M. GRAY	2009-05-28	0.XXX	±	Spec ref	RELEASE
Appr. M. GRAY	2009-05-28	Product family	SFP*	10099103	Rev. C
FCI SFP* IX1 CAGE WITH LIGHT PIPE HOOKS		EMI FINGER TYPE		CUSTOMER	sheet 3 of 4
catalog no		PDM-RevG		DATE: 05-28-2009	



SECTION A-A BEZEL OPENING BELOW PC BOARD

RECOMMENDED PANEL DESIGN LAYOUT WITH LIGHT PIPE KIT

www.fciconnect.com		surface ASME Y14.5	tolerance std ASME Y14.5	projection	MM
Dr. P. S. KUMAR 2009-05-05		TOLERANCES UNLESS OTHERWISE SPECIFIED		size	Scale
Eng. M. GRAY 2009-05-28	ANGULAR	0.xx	±0.25	A2	1:1
Chr. M. GRAY 2009-05-28	LINEAR	0.xxx	±0.05	ECN	N10-0376
Appr. M. GRAY 2009-05-28	Product family	SFP*	Spec ref	RELEASE	
FCI SFP* IX1 CAGE WITH LIGHT PIPE HOOKS		10099103		Rev.	C
EMI FINGER TYPE		CUSTOMER		sheet 4 of 4	

Copyright FCI