

JB Series Color Coded Modular Terminal Blocks

Features:

- Modular construction for customer specified length
- JB6: 3/8" centers - (0.375" or 9.50 mm)
- JB7: 7/16" centers - (0.4375" or 11.11 mm)
- Ten colors available for color coding applications
- Wire ready raised screws
- Stand-offs for better flux removal
- Resilient barriers
- UL Recognized - File Number: E165994

Specifications:

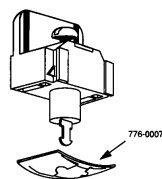
Housing Material:	Thermoplastic polyamide, UL 94V-0, 130°C max. operating temperature
Terminals:	Brass, bright acid tin over copper plating
Screws:	#6-32 steel, zinc plating with clear chromate coating undercut binding head
Ratings:	JB6: 20A, 300V JB7: 20A, 600V
Wire Range:	12 - 22 AWG

Accessories for all JB Series Blocks:

Retaining Clips:

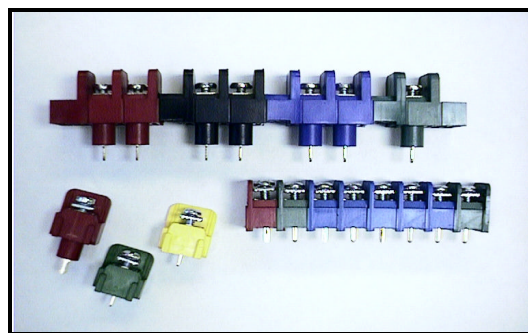
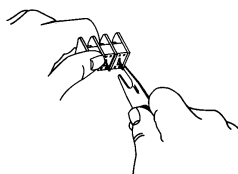
Spring metal retaining clips fit around Insulating barrel to provide permanent mounting of blocks to panels with out the need for mounting holes. Use two per block. Part number 776-0007

Jelly Beans



Take Apart Tool:

Inserting tool into the larger rectangular holes spread the plastic to unlock the retaining barbs that hold the modules together. Part Number 721-0497



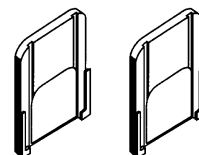
The BlockMaster JB Series Terminal Blocks offer colorful ways of solving field wiring problems. Single circuit modules snap together to form nearly infinite circuit configurations. If desired, the modules may be separated with a special tool. Standard design features include break resistant barriers, standoffs for flux cleaning and ready-to-wire screws. A full range of terminal configurations are offered on industry standard center to center spacings of 3/8" - (0.375" or 9.50 mm) and 7/16" - (0.4375" or 11.11 mm).

BlockMaster JB series terminal blocks offer the ability to color code each terminal to match customer wiring. This allows for the separation of line voltage from signal inputs and outputs.

Block configurations are available assembled to your specs or in packages of 100 single circuit modules (with appropriate end barriers or end mounting).

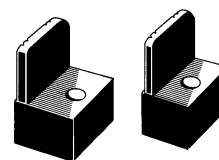
End Barrier

Part Number: 640-448-xx for JB6
Part number: 640-423-xx for JB7



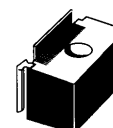
Right End Mounting Hole

Part Number: 640-447-xx for JB6
Part number: 640-422-xx for JB7

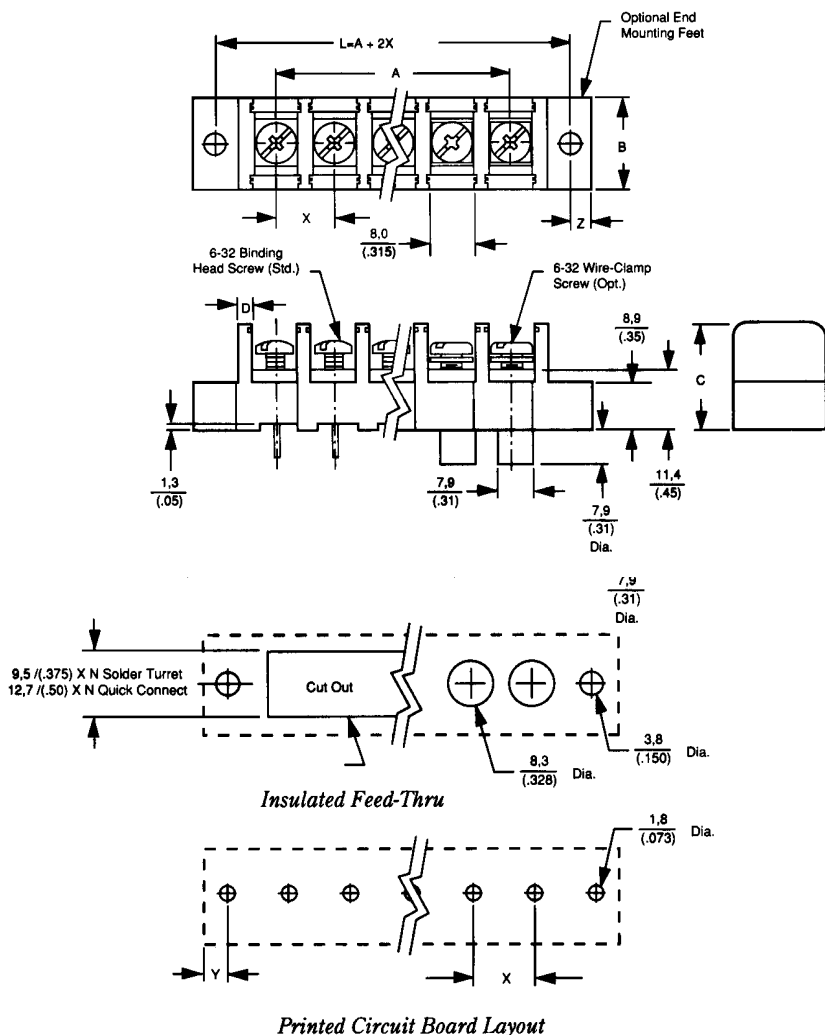


Left End Mounting Hole

Part Number: 640-446-xx for JB6
Part number: 640-421-xx for JB7



JB Series Color Coded Modular Terminal Blocks



Dim.	JB6	JB7
B	15.9 (0.63)	17.8 (0.70)
C	19.0 (0.06)	20.3 (0.80)
D	1.5 (0.06)	3.1 (0.12)
X	9.5 (0.375)	11.1 (0.4375)
Y	5.5 (0.22)	7.1 (0.28)
Z	4.0 (0.16)	4.7 (0.19)

Notes:

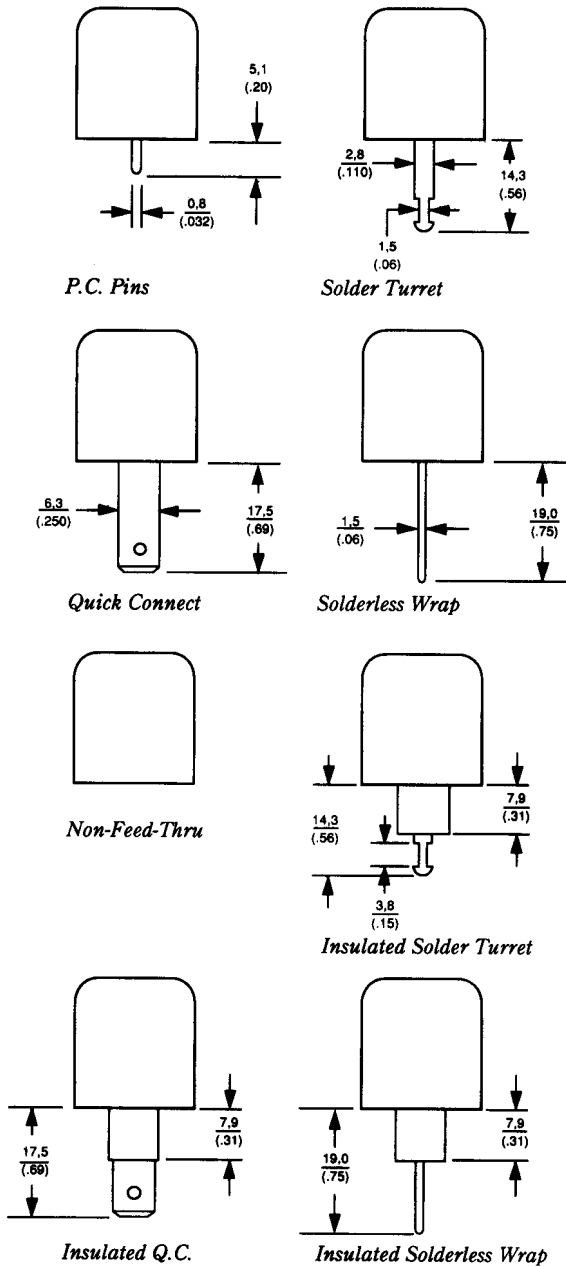
JB6:	A= .375 (N-1) L= A _t + 2X
JB7:	A= .4375 (N-1) L= A _t + 2X
All Dimensions:	mm (inch)

JB6					
# Pos (N)	A (Inches)	A mm	# Pos (N)	A (Inches)	A mm
2	(0.375)	9.5	14	(4.875)	123.8
3	(0.750)	19.1	15	(5.250)	133.3
4	(1.125)	28.6	16	(5.625)	142.9
5	(1.500)	38.1	17	(6.000)	152.4
6	(1.875)	47.6	18	(6.375)	161.9
7	(2.250)	57.1	19	(6.750)	171.5
8	(2.625)	66.7	20	(7.125)	181.0
9	(3.000)	76.2	21	(7.500)	190.5
10	(3.375)	85.7	22	(7.875)	200.2
11	(3.750)	95.2	23	(8.250)	209.6
12	(4.125)	104.8	24	(8.625)	219.1
13	(4.500)	114.3			

JB7					
# Pos (N)	A (Inches)	A mm	# Pos (N)	A (Inches)	A mm
2	(0.4375)	11.1	14	(5.688)	144.5
3	(0.875)	22.2	15	(6.125)	155.6
4	(1.313)	33.3	16	(6.563)	166.7
5	(1.750)	44.4	17	(7.000)	177.8
6	(2.188)	55.6	18	(7.438)	188.9
7	(2.625)	66.7	19	(7.875)	200.0
8	(3.063)	77.8	20	(8.313)	211.1
9	(3.500)	88.9	21	(8.750)	222.2
10	(3.937)	100.0	22	(9.188)	233.4
11	(4.375)	111.1	23	(9.625)	244.5
12	(4.813)	122.2	24	(10.063)	255.6
13	(5.250)	133.3			

JB Series Part Number Guide

Terminal Styles:



Ordering Information:

JBX - X X XX - XX - X

Color²

- | | |
|------------|------------|
| 1 - White | 6 - Yellow |
| 2 - Red | 7 - Purple |
| 3 - Blue | 8 - Brown |
| 4 - Green | 9 - Gray |
| 5 - Orange | 0 - Black |

Number of Screw Positions

(Does not include mounting positions)

- 01 - 100 Module Bulk Pack ³
- 02 - 2 Positions
- 12 - 12 Positions
- There is no limit to length

Screw

- 07 - Steel binding combo head
- 08 - Steel combo head wire clamp

Block Style

- 1. Flat, all positions filled
- 2. Flat, end mounting holes provided^{1 2}
- 3. Insulating turret, end mounting holes provided
- 4. Insulating turret, all positions filled

Terminal Style

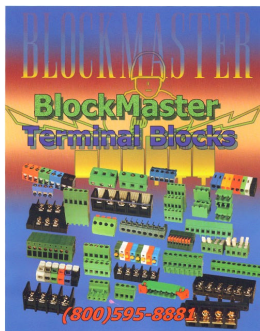
- P - Printed circuit pin
- T - Solder turret
- Q - Quick connect
- S - Non-Feed thru
- W - Solderless wire wrap

Spacing - (Center to Center)

- 6 - 3/8" centers - (0.375" or 9.50 mm)
- 7 - 7/16" centers - (0.4375" or 11.11mm)

Notes:

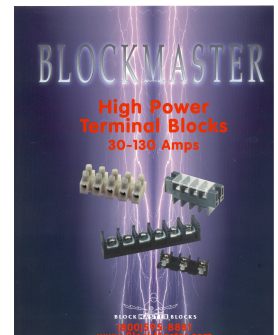
1	Does not change number of live screw positions
2	Color matching from batch to batch not guaranteed
3	Includes 10 end barriers or end mounting feet
4	All Dimensions: mm - (inch) - Specifications subject to change.
5	Example: A terminal block with 3/8" center to center spacing between brass printed circuit pins, all six positions filled (no end mounting holes), binder head screws, in black, is specified as JB6-P107-06-0. If all red, the part number is JB6-P107-06-2



Call to Request the BlockMaster Full Line Catalog and/or the BlockMaster High Power Catalog



World Class Terminal Blocks



BlockMaster Electronics, Inc., 1400 Howard St., Elk Grove Village, IL 60007
Toll Free: 800 595-8881, Phone: 847 956-1680, Fax: 847 956-1690
www.blockmaster.com blockmaster@blockmaster.com