

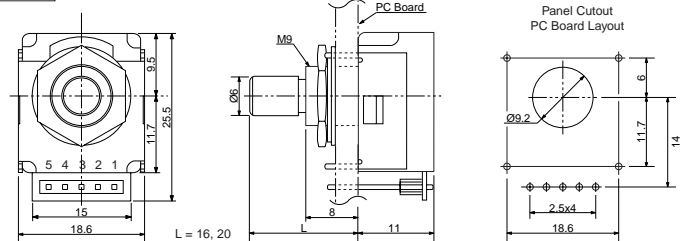
Panel Mount Encoder

RE21 INTEGRAL PUSH SWITCH

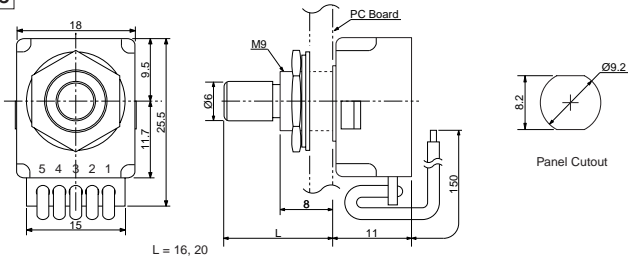
- PUSH SWITCH
- LOW COST
- LONG LIFE
- LOW PROFILE

- DETENT OR FREE
- SHAFT SEAL OPTION
- DURABLE
- IN STOCK NOW

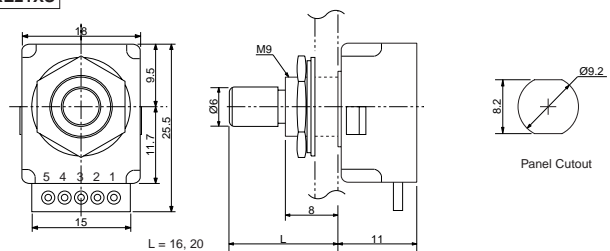
RE21XF



RE21XC



RE21XS



SPECIFICATIONS

ELECTRICAL

1. Input Power: 5.0 VDC $\pm 5\%$ @ 20mA
2. Output Voltage: $H = V_{cc} - 0.5V$
 $L \approx 0.4V$
3. Resolution: 25 PPR
3. Output Type: TTL Compatible
4. Max. Freq. Response: 500 Hz

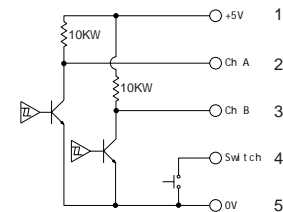
MECHANICAL

1. Max Shaft Load, radial: 5.0 kgf
axial: 5.0 kgf
2. Rotational Angle: 360° continuous
3. Click Torque: 30~70 gf*cm
4. Rotational Life: 1,000,000 cycles

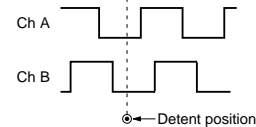
ENVIRONMENTAL

1. Operating Temp: 0° to +60° C
2. Storage Temp: -20° to +80° C
3. Humidity: $\leq 85\%$ RH, no condensation
4. Vibration: 10~55 Hz, 1.5 mm, 2 hrs
5. Shock: 50G, 6ms, 3 axes, 3 reps

OUTPUT CIRCUIT



OUTPUT WAVEFORM



ORDERING INSTRUCTIONS

RE21 25 R

N = Not waterproof
P = Waterproof

Body Type:
C = Cable type
F = Front mounting
S = Standard

Shaft Length:
16 = 16mm
20 = 20mm

Detent:
C = Click
= No Click

Resolution:
25 = 25 Cycles



CUI, Inc.
20050 SW 112th Ave
Tualatin, OR 97062
Tel: 503/612-2300 FAX: 503/612-2383

DRAWN BY	UPDATED	CHECKED	RELEASED
JRH	01/29/07	01/29/07	
PART NO.			REV.
RE21XX25XXXR			B

© CUI, Inc., 2007