

SPECIFICATIONS

ELECTRICAL

1. Input Power: 5.0 VDC \pm 5% @ 7mA
2. Output Voltage: $H = V_{cc} - 0.4V$
 $L \leq 0.4V$
3. Resolution: 20, 25 PPR
3. Output Type: TTL Compatible
4. Max. Freq. Response: 500 Hz

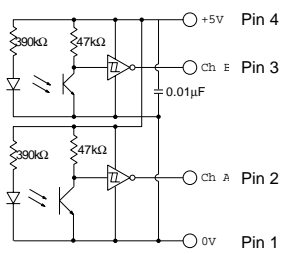
MECHANICAL

1. Max Shaft Load, radial: 1.0 kgf
axial: 1.0 kgf
2. Rotational Angle: 360° continuous
3. Click Torque: 100 gf•cm max.
4. Rotational Life: 2.5×10^6 cycles

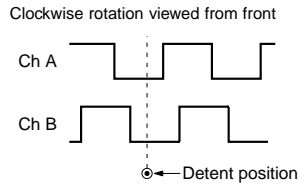
ENVIRONMENTAL

1. Operating Temp: 0° to +60° C
2. Storage Temp: -20° to +80° C
3. Humidity: \leq 85% RH, no condensation
4. Vibration: 10-55 Hz, 1.5 mm, 2 hrs
5. Shock: 50G, 6ms, 3 axes, 3 reps

OUTPUT CIRCUIT



OUTPUT WAVEFORM



ORDERING INSTRUCTIONS

RE20X X XX X XX

- N: Non-Drip Proof
- P: Drip Proof
- S: Solder Hole
- C: Lead wire
- V: Vertical Mount
- F: Front Mount
- C: Detent
- " ": No Detent
- 16: 16mm shaft
- 20: 20mm shaft
- 20: 20 PPR
- 25: 25 PPR

<p>CUI Stack, Inc. 9615 SW Allen Blvd. #103 Beaverton, OR 97005 Tel: 503/643-4899 FAX: 503/643-6129</p>			
PART NO. RE20XXXXXXX			REV. A