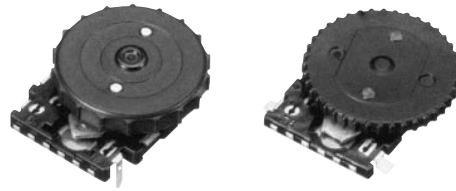


Edge Drive Jog Encoders

Japan

Type: **EVQWK**



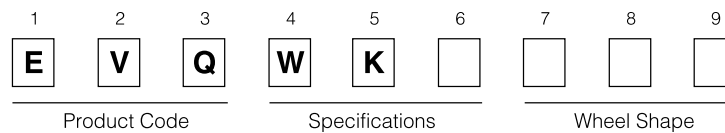
■ Features

- An encoder with detents and an excellent operation feeling
- A push-on switch with a clear-click operation feel
- Compact with thin profile
- Reflow soldering type available
- Anti-electrostatic measures available

■ Recommended Applications

- Memory paging and transmitting
- Menu selection and input for Portable Electronic Equipment

■ Explanation of Part Numbers

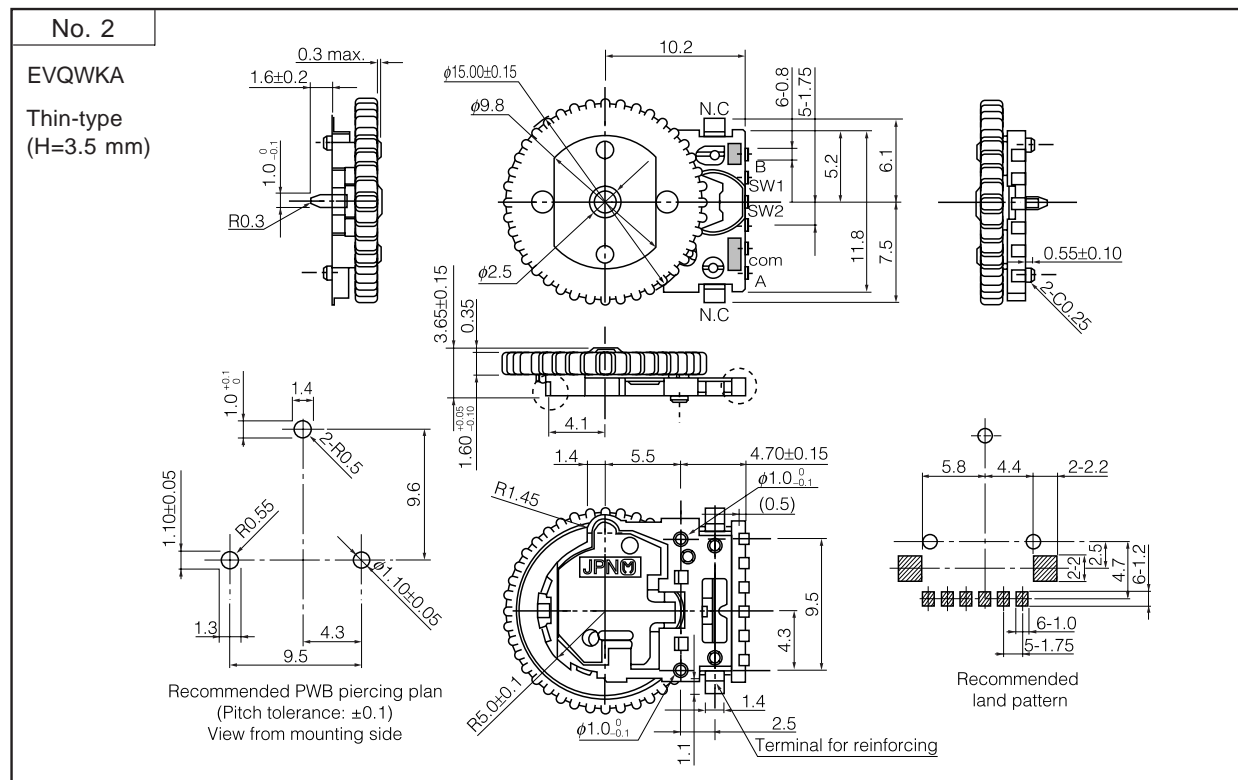
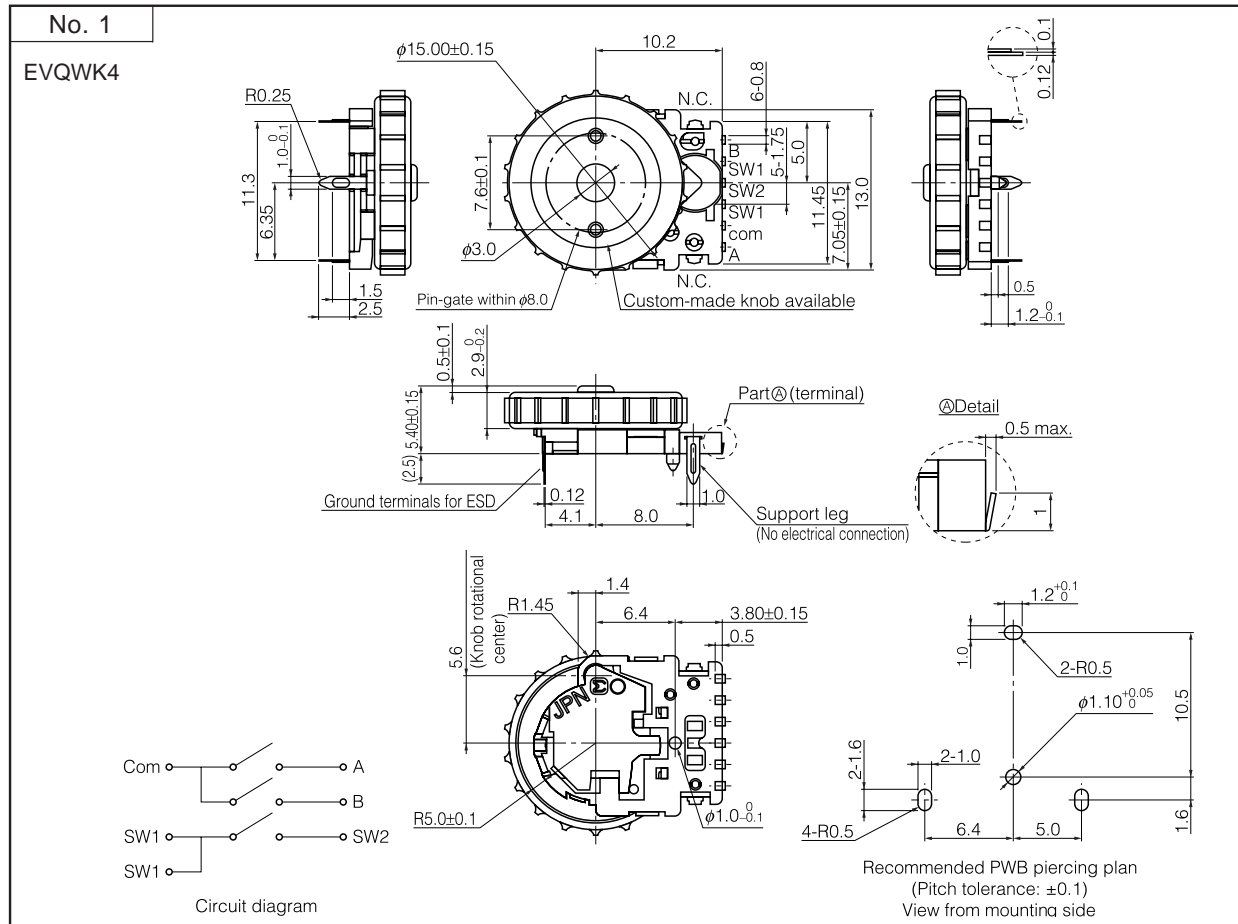


■ Major Specifications

Mechanical	Encoder	Detents	15 points
		Rotation Torque	1 mN·m to 10 mN·m
	Push-on Switch	Travel	0.3 mm
		Operating Force	4.5 N±1.5 N
Electrical	Encoder	Pulses	15 pulses
		Output Signals	2-Phase (A and B)
		Contact Resistance	1 Ω max.
	Push-on Switch	Contact Resistance	100 mΩ
Endurance	Encoder/ Push-on Switch	Operating Life	100000 cycles min.
Minimum Quantity/ Packing Unit	Minimum Quantity/Packing Unit		100 pcs. (Tray Pack)
			400 pcs. (Reel Pack)
	Quantity/Carton		1000 pcs.
			1600 pcs. (Reel Pack)

Design and specifications are each subject to change without notice. Ask factory for the current technical specifications before purchase and/or use. Should a safety concern arise regarding this product, please be sure to contact us immediately.

■ Dimensions in mm (not to scale)



Design and specifications are each subject to change without notice. Ask factory for the current technical specifications before purchase and/or use. Should a safety concern arise regarding this product, please be sure to contact us immediately.