



**Intronics
Power®**

Low Cost, Single and Multichannel Isolation Amplifier

MODEL 290A, 292A

FEATURES

Low Cost

Multichannel Capability Using External Oscillator (292A)

Isolated Power Supply: $\pm 13\text{V}$ dc @ $\pm 5\text{mA}$ (290A) or $\pm 15\text{mA}$ (292A)

Low Nonlinearity: 0.1% @ 10V pk-pk Output

High Gain Stability: 0.001%/1000 Hours; 0.01%/ $^{\circ}\text{C}$

Small Size: 1.5" \times 1.5" \times 0.62"

Low Input Offset Voltage Drift: $10\mu\text{V}/^{\circ}\text{C}$ (Gain = 100V/V)

Wide Input/Output Dynamic Range: 20V pk-pk

High CMV Isolation: 1500V dc, Continuous

Wide Gain Range: 1 to 100V/V

APPLICATIONS

Ground Loop Elimination in Industrial and Process Control

High Voltage Protection in Data Acquisition Systems

Fetal Heart Biomedical and Monitoring Instrumentation

Off-Ground Signal Measurements

GENERAL DESCRIPTION

Models 290A and 292A are low cost, compact, isolation amplifiers that are optimized for single and multichannel industrial applications, respectively. The model 290A has a self-contained oscillator and is intended for single channel applications. A single external synchronizing oscillator can drive up to 16 model 292A's or, a virtually limitless number of model 292A's can be configured using multiple oscillators. The user can supply the external oscillator circuit or specify model 281 oscillator module, which includes a voltage regulator for operation over a wide single supply voltage range of +8V to +28V.

Models 290A and 292A design features include: adjustable gain, from 1 to 100V/V, dual isolated power, $\pm 13\text{V}$ dc, $\pm 1500\text{V}$ dc off ground isolation, 100dB minimum CMR at 60Hz, $1\text{k}\Omega$ source imbalance, in a compact 1.5" \times 1.5" \times 0.6" module. Models 290A and 292A achieve low input noise of $1\mu\text{V}$ pk-pk (10Hz bandwidth, G = 100V/V), nonlinearity of $\pm 0.1\%$ @ 10V pk-pk output, and an input/output dynamic range of 20V pk-pk.

Using modulation techniques with reliable transformer isolation, models 290A and 292A will interrupt ground loops, leakage paths, and voltage transients, while providing dc to 2kHz (-3dB) response.

WHERE TO USE MODELS 290A AND 292A

Industrial Applications: In data acquisition systems, computer interface systems, process signal isolators and high CMV instrumentation, models 290A and 292A offer complete galvanic isolation and protection against damage from transients and fault voltages. High level transducer interface capability is afforded



with 20V pk-pk input signal range at a gain of 1V/V operation. In portable single or multichannel designs, single power supply operation (+8V to +16V) enables battery operation.

DESIGN FEATURES AND USER BENEFITS

Isolated Power: Dual $\pm 13\text{V}$ dc output, completely isolated from the input power terminals ($\pm 1500\text{V}$ dc isolation), provides the capability to excite floating signal conditioners, front end buffer amplifiers and remote transducers such as thermistors or bridges.

Adjustable Gain: Models 290A and 292A adjustable gain offers compatibility with a wide class of input signals. A single external resistor enables gain adjustment from 1V/V to 100V/V providing flexibility in both high level transducer interfacing as well as low level sensor measurement applications.

Floating, Guarded Front-End: The input stage of models 290A and 292A can directly accept floating differential signals or it may be configured as a high performance instrumentation front-end to accept signals having CMV with respect to input power common.

High Reliability: Models 290A and 292A are conservatively designed, compact modules, capable of reliable operation in harsh environments. They have a calculated MTBF of over 400,000 hours and are designed to meet MIL-STD-202E environmental testing as well as the IEEE Standard for Transient Voltage Protection (472-1974: Surge Withstand Capability).

1400 PROVIDENCE HIGHWAY • BUILDING 2 NORWOOD, MASSACHUSETTS 02062-5015
PHONE: 781-551-5500 FAX: 781-551-5555

SPECIFICATIONS

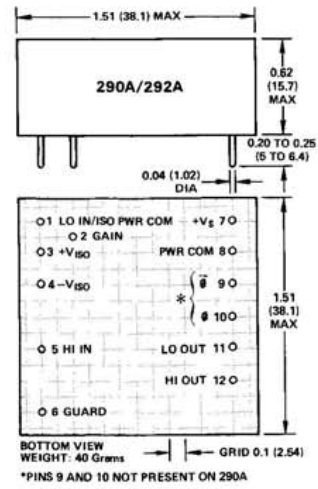
(typical @ +25°C; G = 100V/V and V_S = +15V dc, unless otherwise noted)

MODEL	290A	292A
GAIN (NONINVERTING)		
Range (50kΩ Load)	1 to 100V/V	
Formula	Gain = $1 + \frac{100k\Omega}{1k\Omega + R_i (k\Omega)}$	
Deviation from Formula	±3%	
vs. Time	±0.001%/1000 Hours	
vs. Temperature (-25°C to +85°C) ¹	±0.0075%/°C	
Nonlinearity, G = 1V/V to 100V/V ²	±0.1% (±0.25%) ³	
INPUT VOLTAGE RATINGS		
Linear Differential Range, G = 1V/V	±5V min (±10V min) ³	
Max Safe Differential Input	110V rms	
Continuous, 1 min	1500V rms max	
Max CMV, Inputs to Outputs	±1000V pk max	
ac, 60Hz, 1 Minute Duration	±1500V pk max	
Continuous, ac		
Continuous, dc		
CMR, Inputs to Outputs, 60Hz, R _S ≤ 1kΩ	106dB	
Balanced Source Impedance	100dB min	
1kΩ Hi In Lead Only		
Max Leakage Current, Inputs to Power Common	10μA rms max	
@ 115V ac, 60Hz		
INPUT IMPEDANCE		
Differential	10 ⁸ Ω 70pF	
Overload	100kΩ	
Common Mode	5 × 10 ¹⁰ Ω 100pF	
INPUT DIFFERENCE CURRENT		
Initial, @ +25°C	+3nA	
vs. Temperature (-25°C to +85°C)	±0.1nA/°C	
INPUT NOISE		
Voltage, G = 100V/V		
0.01Hz to 10Hz	1μV p-p	
10Hz to 1kHz	1.5μV rms	
Current		
0.05Hz to 100Hz	5pA p-p	
FREQUENCY RESPONSE		
Small Signal, -3dB, G = 1V/V	2.5kHz	
Slew Rate	50mV/μs	
Full Power, 10V p-p Output		
Gain - 1V/V thru 100V/V	2.0kHz(1.0kHz) ³	3.0kHz(1.0kHz) ³
OFFSET VOLTAGE REFERRED TO INPUT		
Initial, @ +25°C, Adjustable to Zero	±(5 + 50/G)mV	
vs. Temperature (-25°C to +85°C)	±(10 + 150/G)μV/°C	
vs. Supply Voltage	±1mV/%	
RATED OUTPUT		
Voltage, 50k Load	±5V min (±10V min) ³	
Output Impedance	1kΩ	
Output Ripple, 1MHz Bandwidth	10mV pk-pk	
OSCILLATOR DRIVE INPUT		
Input Voltage	N/A	8 to 16V pk-pk
Input Frequency	N/A	100kHz ±5%, max
ISOLATED POWER OUTPUTS		
Voltage Full Load	±13V dc	
Accuracy	±5%	
Current ⁴	±5mA min	±15mA min
Regulation, No Load to Full Load	+0, -15%	
Ripple, 100kHz Bandwidth	200mV p-p	250mV p-p
POWER SUPPLY, SINGLE POLARITY		
Voltage, Rated Performance	+15V dc	
Voltage, Operating	+8V dc to +15.5V dc	
Current, Quiescent	+20mA	
TEMPERATURE RANGE		
Rated Performance	-25°C to +85°C	
Storage	-55°C to +85°C	
CASE DIMENSIONS		
	1.5" X 1.5" X 0.62"	

¹ Gain temperature drift is specified as a percentage of output signal level.
² Gain nonlinearity is specified as a percentage of 10V pk-pk output span.
³ These specs apply for a 20V pk-pk output span.
⁴ Do not load V_{ISO} when operating at output spans greater than 10V pk-pk.
 Specifications subject to change without notice.

OUTLINE DIMENSIONS

Dimensions shown in inches and (mm).



SHIELDED MOUNTING SOCKET AC1054

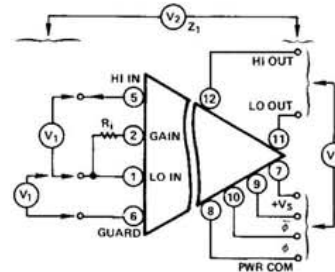
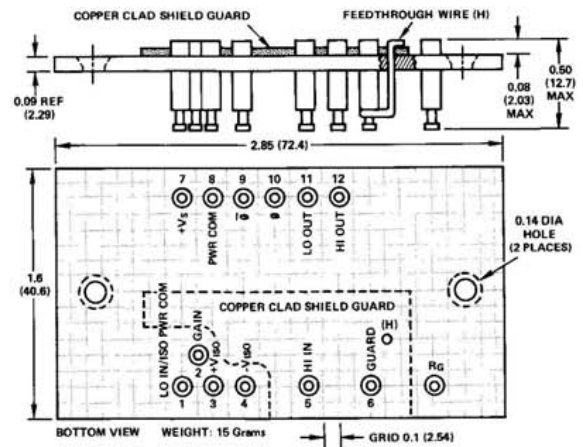


Figure 1. Model 290A and 292A Terminal Ratings

Symbol	Rating	Remarks
V ₁	±110V rms (cont.)	Withstand Voltage, Steady State
V ₂	±1000V pk (cont.)	Isolation, Steady State, ac
V ₂	±1500V pk (cont.)	Isolation, Steady State, dc
V ₂	±1500V rms (1 min)	Isolation, ac, 60Hz
V ₃	±50V pk (cont.)	Isolation, dc
Z ₁	50GΩ 20pF	Isolation Impedance

Table 1. Isolation Ratings Between Terminals

SELECTING BANDWIDTH

In low frequency signal measurements, such as thermocouple temperature measurements, strain gage measurements and geophysical instrumentation, an external filter is used to select bandwidth and minimize output noise.

When used with a buffer amplifier as shown in Figure 5a below, a series resistor (R_S) is used to lower the effective value of the filter capacitor required to achieve very low frequency (under 200Hz) noise filtering.

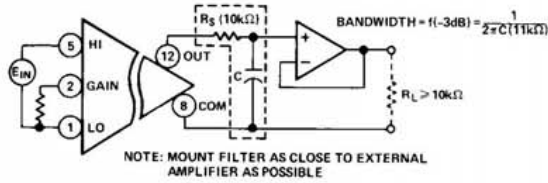


Figure 5a. Selecting Bandwidth with External Capacitor and Buffer

An active filter, as illustrated in Figure 5b will significantly improve 60Hz noise reduction at the output by providing a sharp roll-off characteristic. The 5Hz 3-pole active filter design illustrated in Figure 5b, will increase the 60Hz noise reduction by 50dB. Overall CMR performance of models 290 and 292 and the 5Hz active filter approaches 150dB @ 60Hz and 1kΩ imbalance.

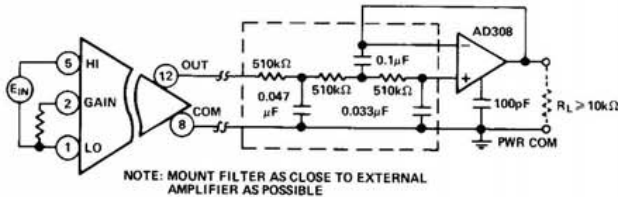


Figure 5b. Selecting Bandwidth with a 3-Pole 5Hz Active Filter

PERFORMANCE CHARACTERISTICS

Common Mode Rejection: Input-to-Output CMR is dependent on source impedance imbalance, signal frequency and amplifier gain. CMR is rated at 115V ac, 60Hz and 1kΩ imbalance at a gain of 100V/V. Figure 6 illustrates CMR performance as a function of signal frequency. CMR approaches 130dB at dc with source imbalances as high as 1kΩ. As gain is decreased, CMR is reduced. At a gain of 1V/V, CMR is typically 12dB lower than at a gain of 100V/V.

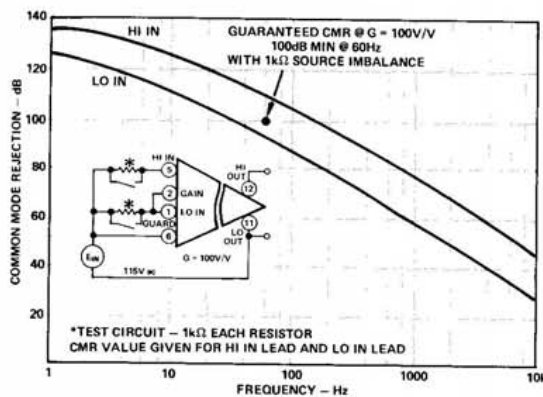


Figure 6. Typical Common Mode Rejection vs. Frequency

Figure 7 illustrates the effect of source imbalance on CMR performance at 60Hz and Gain = 100V/V. CMR is typically 110dB at 60Hz and a balanced source. CMR is maintained greater than 70dB for source imbalances up to 100kΩ.

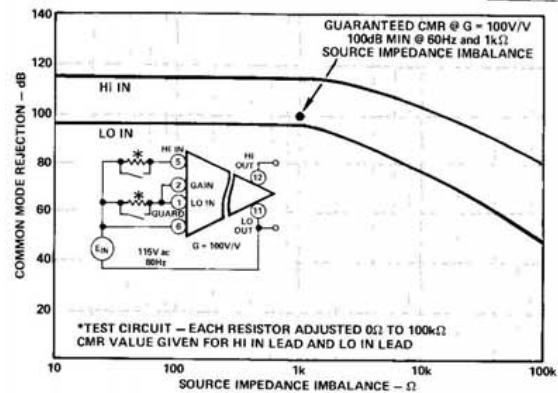


Figure 7. Typical Common Mode Rejection vs. Source Impedance Imbalance

Gain Nonlinearity: Linearity error is defined as the deviation of the output voltage from the best straight line and is specified as a % of peak-to-peak output voltage span; e.g., nonlinearity of models 290A and 292A operating at an output span of 10V pk-pk ($\pm 5V$) is $\pm 0.1\%$ or $\pm 10mV$. Figure 8 illustrates gain nonlinearity for any output span to 20V pk-pk ($\pm 10V$).

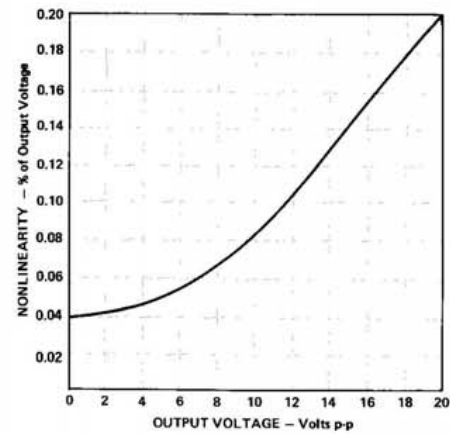


Figure 8. Typical Gain Nonlinearity vs. Output Voltage

Input Voltage Noise: Voltage noise, referred to input, is dependent on gain and bandwidth as illustrated in Figure 9. RMS voltage noise is shown in a bandwidth from 0.01Hz to the frequency shown on the horizontal axis. The noise in a bandwidth from 0.01Hz to 10Hz is $1\mu V$ pk-pk at a gain of 100V/V. This value is derived by multiplying the rms value at $f = 10Hz$ shown in Figure 9 by 6.6.

For best noise performance in particular applications, a low pass filter at the output should be used to selectively roll-off noise and undesired signal frequencies beyond the bandwidth of interest. Increasing gain will also reduce the input noise.

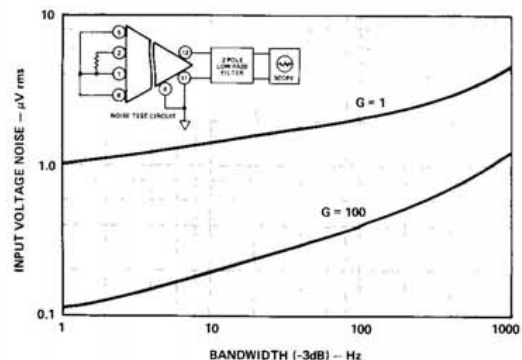


Figure 9. Typical Input Voltage Noise vs. Bandwidth

The Multi-Channel Isolation Amplifier

Input Offset Voltage Drift: Total input drift is composed of two sources, input and output stage drifts and is gain dependent. The curve of Figure 10 illustrates total input drift over the gain range of 1 to 100V/V.

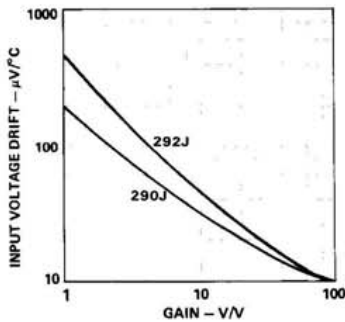
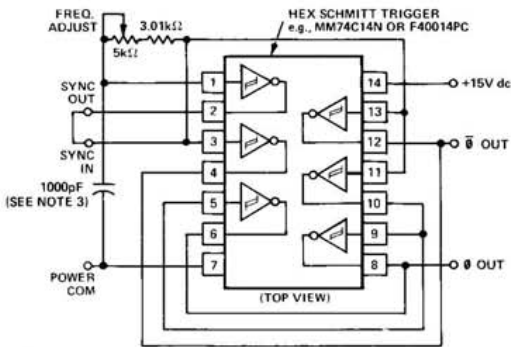


Figure 10. Typical Input Offset Voltage Drift vs. Gain

REFERENCE EXCITATION OSCILLATOR, MODEL 281

When applying model 292A, the user has the option of building a low cost 100kHz excitation oscillator, as shown in Figure 11, or purchasing a module from Analog Devices—model 281.



- NOTES:
 1. FREQ. ADJUST: ADJUST TRIM POT FOR OUTPUT FREQUENCY OF 100kHz ±5%.
 2. FOR SLAVE OPERATION, REMOVE JUMPER FROM SYNC OUT AND SYNC IN PINS.
 3. USE CERAMIC CAPACITOR, "COG" OR "NPO" CHARACTERISTIC.

Figure 11. 100kHz Oscillator Interconnection Diagram

The block diagram of model 281 is shown in Figure 12. An internal +12V dc regulator is provided to permit the user the option of operating over two, pin selectable, power input ranges; terminal 6 offers a range of +14V dc to +28V dc; terminal 7 offers an input range of +8V dc to +14V dc.

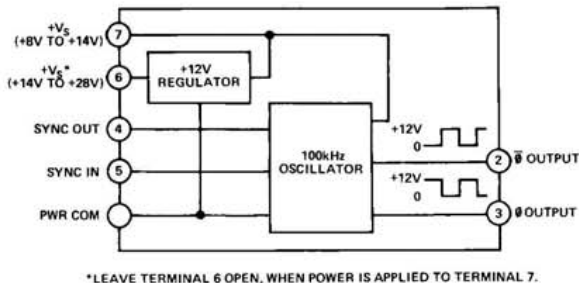


Figure 12. Model 281 Block Diagram

Model 281 oscillator is capable of driving up to 16 model 292A's. As shown in Figure 13, an additional model 281 may be driven in a slave-mode to expand the total system channels from 16 to 32. By adding additional model 281's in this manner, systems of over 1000 channels may be easily configured.

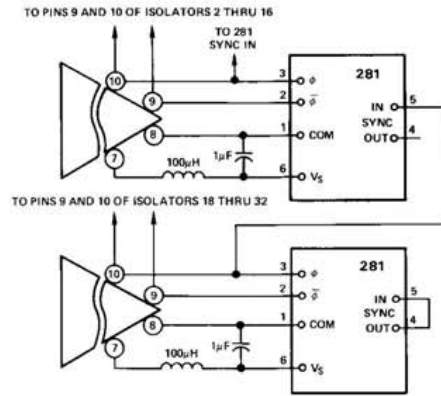


Figure 13. External Oscillator Interconnection

SPECIFICATIONS

(typical @ +25°C and $V_S = +15V$ dc unless otherwise noted)

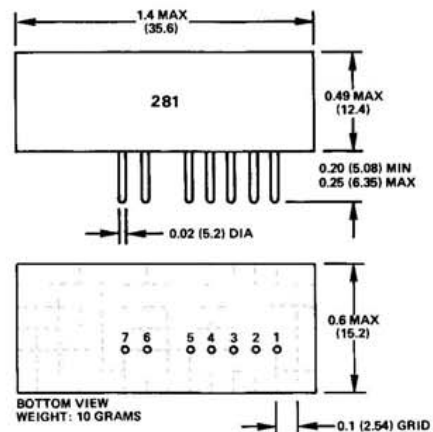
MODEL	281
OUTPUT	
Frequency	100kHz ±5%
Waveform	Squarewave
Voltage (ϕ and $\bar{\phi}$ terminals)	0 to +12V pk
Fan-Out ^{1,2}	16 max
POWER SUPPLY RANGE³	
High Input, Pin 6	+(14 to 28)V dc
Quiescent Current, N.L.	+5mA
F.L.	+16mA
Low Input, Pin 7	+(8 to 14)V dc
Quiescent Current, N.L.	+12mA
F.L.	+33mA
TEMPERATURE	
Rated Performance	0 to +70°C
Storage	-55°C to +85°C

- ¹ Model 292A oscillator drive input represents unity oscillator load.
² For applications requiring more than 16 292A's, additional 281's may be used in a master/slave mode. Refer to Figure 13.
³ Full load consists of 16 model 292A's and 281 oscillator slave.

Specifications subject to change without notice.

OUTLINE DIMENSIONS

Dimensions shown in inches and (mm).



- PIN TERMINAL IDENTIFICATION**
- | | | | |
|---|---------------------|---|--------------------------------------|
| 1 | POWER COMMON | 5 | SYNC INPUT |
| 2 | $\bar{\phi}$ OUTPUT | 6 | + V_S : HIGH RANGE (+14 to 28)V dc |
| 3 | ϕ OUTPUT | 7 | + V_S : LOW RANGE (+8 to 14)V dc |
| 4 | SYNC OUTPUT | | |

**MATING SOCKET:
CINCH #16 DIP OR EQUIVALENT**

