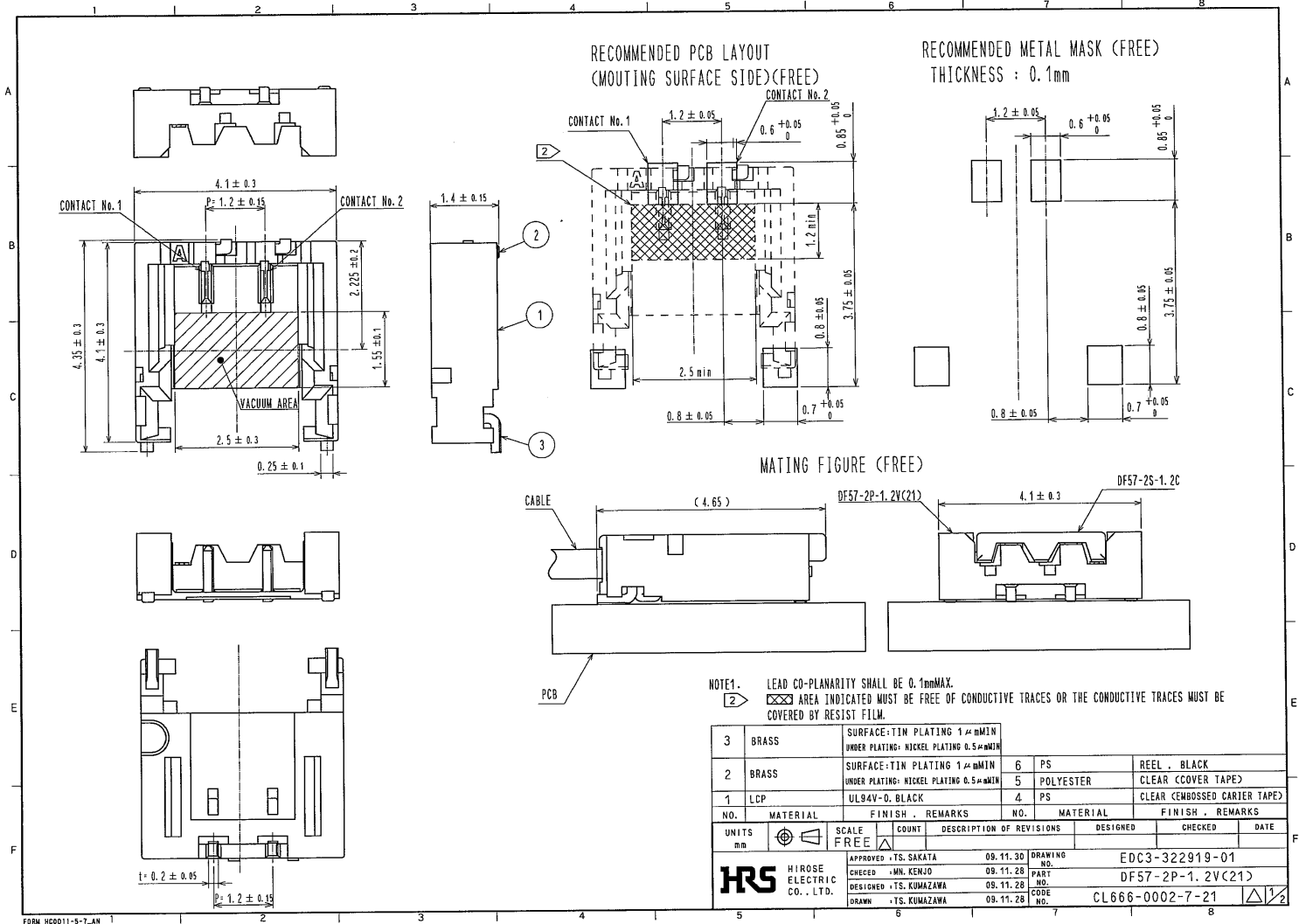


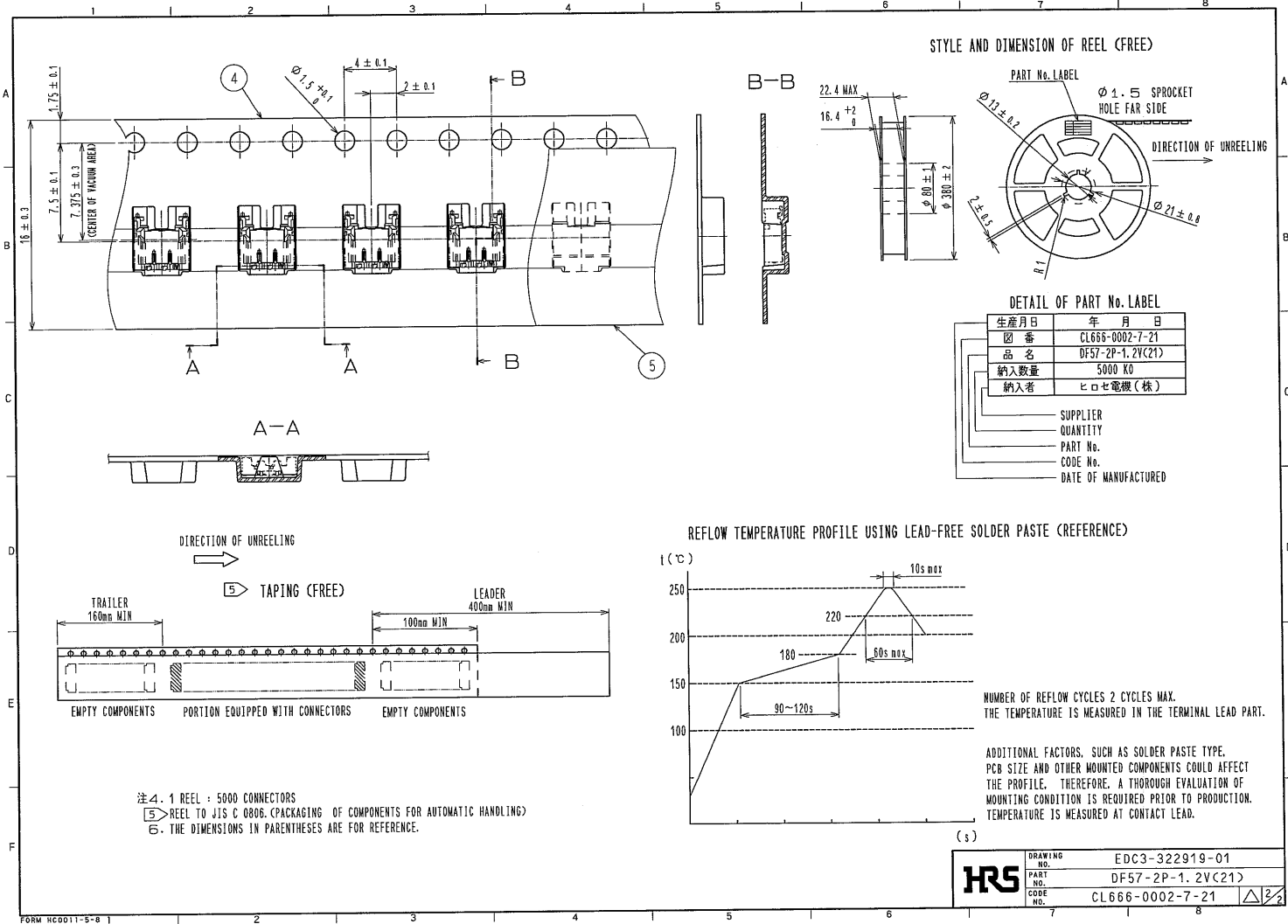
NO.		MATERIAL		FINISH . REMARKS		1 PBT		UL94V-0. NATURAL/WHITE	
UNITS	mm	SCALE	20 : 1	COUNT	2	DESCRIPTION OF REVISIONS	DESIGNED	CHECKED	DATE
						DIS-H-004418	TS. KUMAZAWA	HK. UMEHARA	09.12.19
APPROVED . TS. SAKATA						09.11.30	DRAWING NO.		EDC3-322922-00
CHECKED . MN. KENJO						09.11.28	PART NO.		DF57-2S-1.2C
DESIGNED . TS. KUMAZAWA						09.11.28	CODE NO.		CL666-0005-5-00
DRAWN . TS. KUMAZAWA						09.11.28			



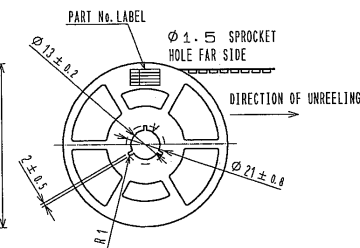
FORM HCD011-5-7.LAN



3	BRASS	SURFACE-TIN PLATING 1μmMIN UNDER PLATING-NICKEL PLATING 0.5μmMIN	6	PS	REEL, BLACK	
2	BRASS	SURFACE-TIN PLATING 1μmMIN UNDER PLATING-NICKEL PLATING 0.5μmMIN	5	POLYESTER	CLEAR (COVER TAPE)	
1	LCP	UL94V-0, BLACK	4	PS	CLEAR (EMBOSSED CARRIER TAPE)	
NO.	MATERIAL	FINISH, REMARKS	NO.	MATERIAL	FINISH, REMARKS	
UNITS	SCALE	COUNT	DESCRIPTION OF REVISIONS	DESIGNED	CHECKED	DATE
mm	FREE	△				
		APPROVED - TS. SAKATA 09.11.30 CHECKED - MN. KENJO 09.11.28 DESIGNED - TS. KUMAZAWA 09.11.28 DRAWN - TS. KUMAZAWA 09.11.28	DRAWING NO. EDC3-322919-01 PART NO. DF57-2P-1.2V(21) CODE NO. CL666-0002-7-21			



STYLE AND DIMENSION OF REEL (FREE)

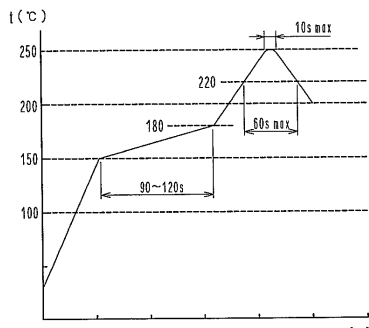


DETAIL OF PART No. LABEL

生産月日	年 月 日
図番	CL666-0002-7-21
品名	DF57-2P-1.2V(21)
納入数量	5000 KO
納入者	ヒロセ電機(株)

- ____ SUPPLIER
- ____ QUANTITY
- ____ PART No.
- ____ CODE No.
- ____ DATE OF MANUFACTURED

REFLOW TEMPERATURE PROFILE USING LEAD-FREE SOLDER PASTE (REFERENCE)

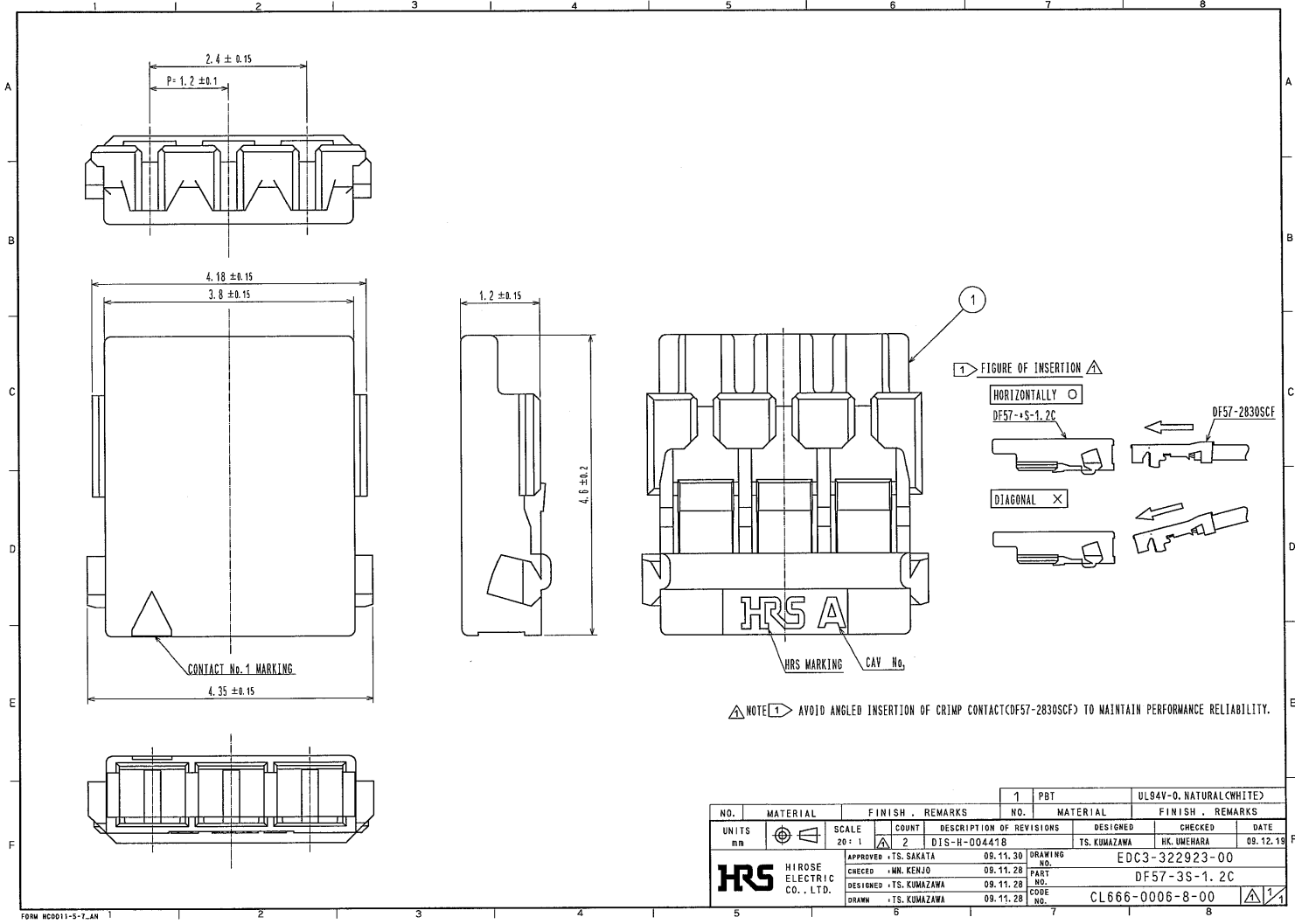


NUMBER OF REFLOW CYCLES 2 CYCLES MAX.
THE TEMPERATURE IS MEASURED IN THE TERMINAL LEAD PART.

ADDITIONAL FACTORS, SUCH AS SOLDER PASTE TYPE, PCB SIZE AND OTHER MOUNTED COMPONENTS COULD AFFECT THE PROFILE. THEREFORE, A THOROUGH EVALUATION OF MOUNTING CONDITION IS REQUIRED PRIOR TO PRODUCTION. TEMPERATURE IS MEASURED AT CONTACT LEAD.

注4. 1 REEL : 5000 CONNECTORS
 5 REEL TO JIS C 0806. (PACKAGING OF COMPONENTS FOR AUTOMATIC HANDLING)
 6. THE DIMENSIONS IN PARENTHESES ARE FOR REFERENCE.

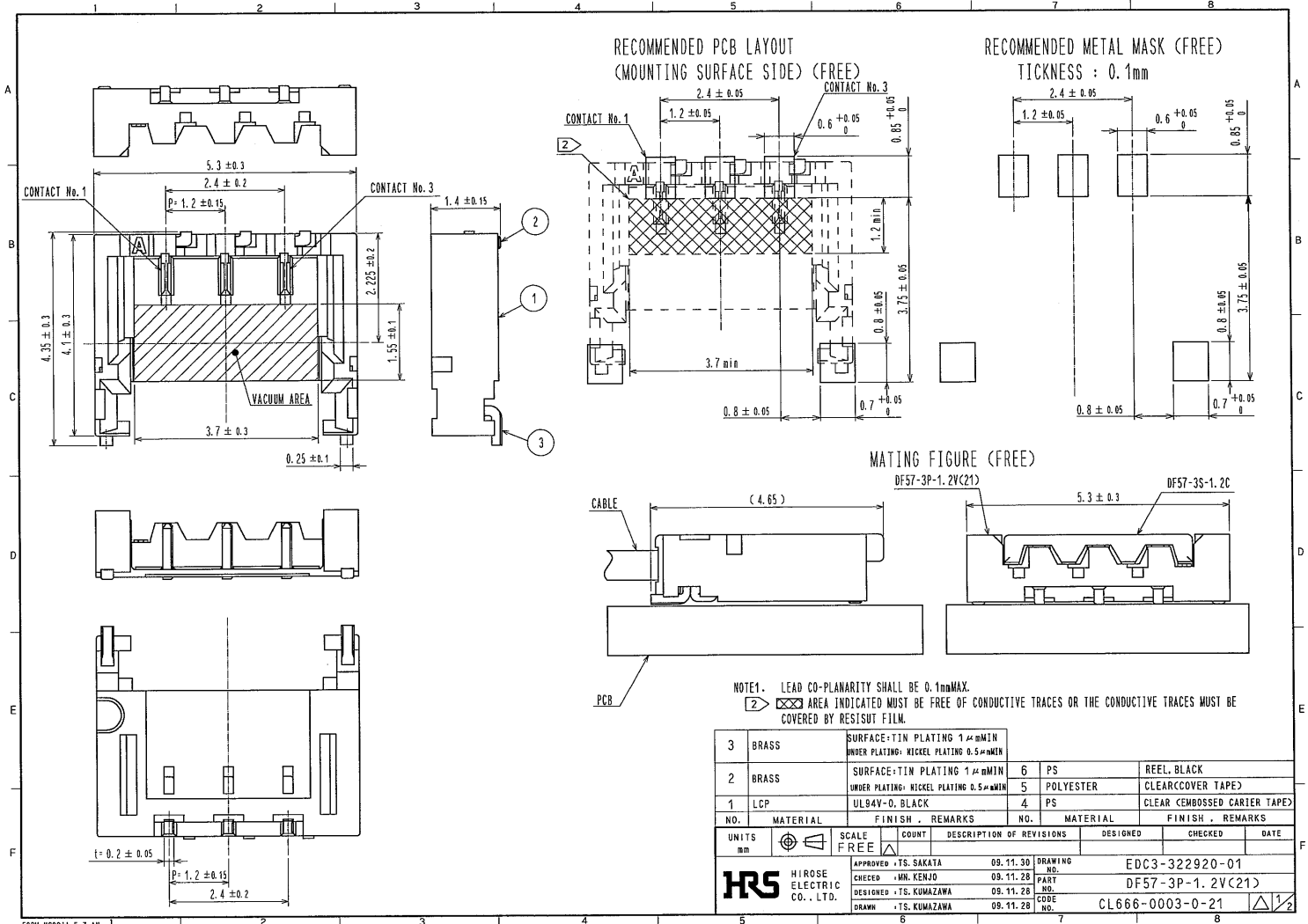
HRS	DRAWING NO.	EDC3-322919-01
	PART NO.	DF57-2P-1.2V(21)
	CODE NO.	CL666-0002-7-21
		△ 2/2



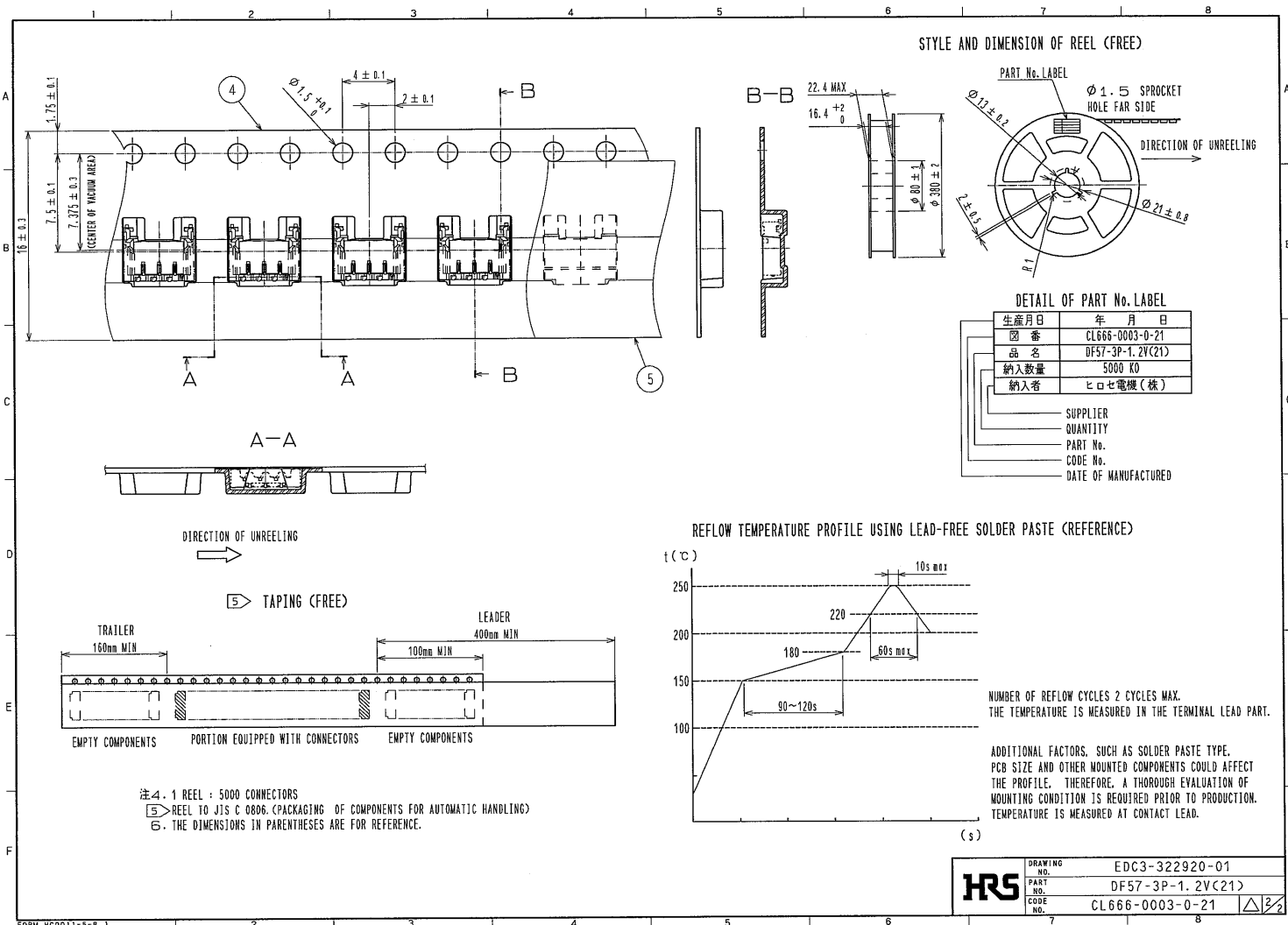
NO.		MATERIAL		FINISH . REMARKS		1 PBT		UL94V-0. NATURAL(WHITE)					
UNITS	mm	SCALE	20 : 1	COUNT	2	DESCRIPTION OF REVISIONS	DIS-H-004418	DESIGNED	TS. KUMAZAWA	CHECKED	HK. UMEHARA	DATE	09.12.19
APPROVED		.TS. SAKATA		09.11.30		DRAWING		NO.		EDC3-322923-00			
CHECKED		.MN. KENJO		09.11.28		PART		NO.		DF57-3S-1.2C			
DESIGNED		.TS. KUMAZAWA		09.11.28		CODE		NO.		CL666-0006-8-00			
DRAWN		.TS. KUMAZAWA		09.11.28		NO.							



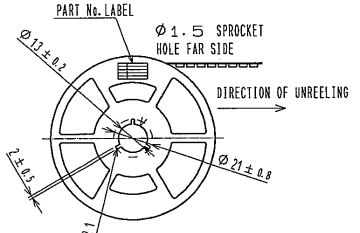
FORM NC0011-5-7_LAN



FORM HCD011-5-7.LAN

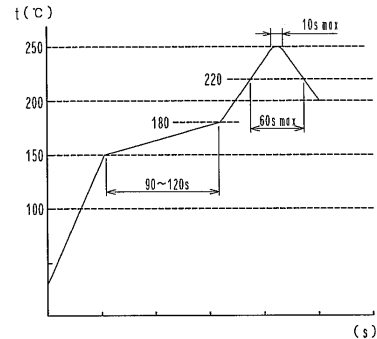


STYLE AND DIMENSION OF REEL (FREE)



DETAIL OF PART No. LABEL	
生産月日	年 月 日
図番	CL666-0003-0-21
品名	DF57-3P-1.2V(21)
納入数量	5000 KO
納入者	ヒロセ電機(株)
SUPPLIER	
QUANTITY	
PART No.	
CODE No.	
DATE OF MANUFACTURED	

REFLOW TEMPERATURE PROFILE USING LEAD-FREE SOLDER PASTE (REFERENCE)



NUMBER OF REFLOW CYCLES 2 CYCLES MAX.
 THE TEMPERATURE IS MEASURED IN THE TERMINAL LEAD PART.

ADDITIONAL FACTORS, SUCH AS SOLDER PASTE TYPE, PCB SIZE AND OTHER MOUNTED COMPONENTS COULD AFFECT THE PROFILE. THEREFORE, A THOROUGH EVALUATION OF MOUNTING CONDITION IS REQUIRED PRIOR TO PRODUCTION. TEMPERATURE IS MEASURED AT CONTACT LEAD.

注4. 1 REEL : 5000 CONNECTORS
 ⑤ REEL TO JIS C 0806. (PACKAGING OF COMPONENTS FOR AUTOMATIC HANDLING)
 ⑥ THE DIMENSIONS IN PARENTHESES ARE FOR REFERENCE.

HRS	DRAWING NO.	EDC3-322920-01
	PART NO.	DF57-3P-1.2V(21)
	CODE NO.	CL666-0003-0-21
		△ 2/2