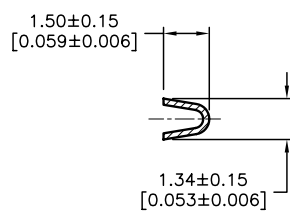
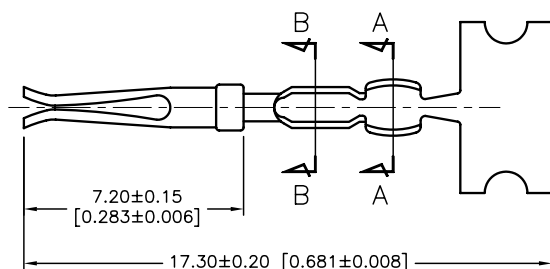
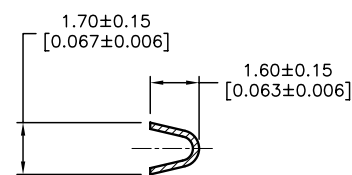
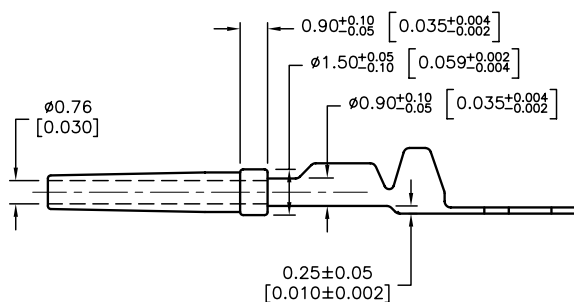
	ALL RIGHTS RESERVED. NO PORTION OF THIS PUBLICATION, WHETHER IN WHOLE OR IN PART CAN BE REPRODUCED WITHOUT THE EXPRESS WRITTEN CONSENT OF SPC TECHNOLOGY.  SPC-F005.DWG			REVISIONS					DOC. NO. SPC-F005 * Effective: 7/8/02 * DCP No: 1398				
				DCP #	REV	DESCRIPTION	DRAWN	DATE	CHECKD	DATE	APPRVD	DATE	
				1876	A	RELEASED	EO	07/25/06	SA	07/25/06	HO	07/25/06	



**SECTION: B-B**



**SECTION: A-A**



**SPECIFICATIONS:**

1. Contact: Phosphor Bronze, Stamped Gold-Plated

<div>DISCLAIMER: ALL STATEMENTS AND TECHNICAL INFORMATION CONTAINED HEREIN ARE BASED UPON INFORMATION AND/OR TESTS WE BELIEVE TO BE ACCURATE AND RELIABLE. SINCE CONDITIONS OF USE ARE BEYOND OUR CONTROL, THE USER SHALL DETERMINE THE SUITABILITY OF THE PRODUCT FOR THE INTENDED USE AND ASSUME ALL RISK AND LIABILITY WHATSOEVER IN CONNECTION THEREWITH.</div>	<div>TOLERANCES:  Unless Otherwise Specified  .X ±0.2 [0.008] .XX ±0.12 [0.005]</div>	DRAWN BY:	DATE:	DRAWING TITLE:				
		EKLAS ODISH	07/25/06	High-Density Crimp Style Stamped female Contacts				
		CHECKED BY:	DATE:	SIZE	DWG. NO.	ELECTRONIC FILE	REV	
		SAMI ALNADI	07/25/06	A	SPC15384	79K4967.DWG	A	
		APPROVED BY:		DATE:	SCALE: NTS		U.O.M.: mm [INCHES]	SHEET: 1 OF 1
		HISHAM ODISH		07/25/06				