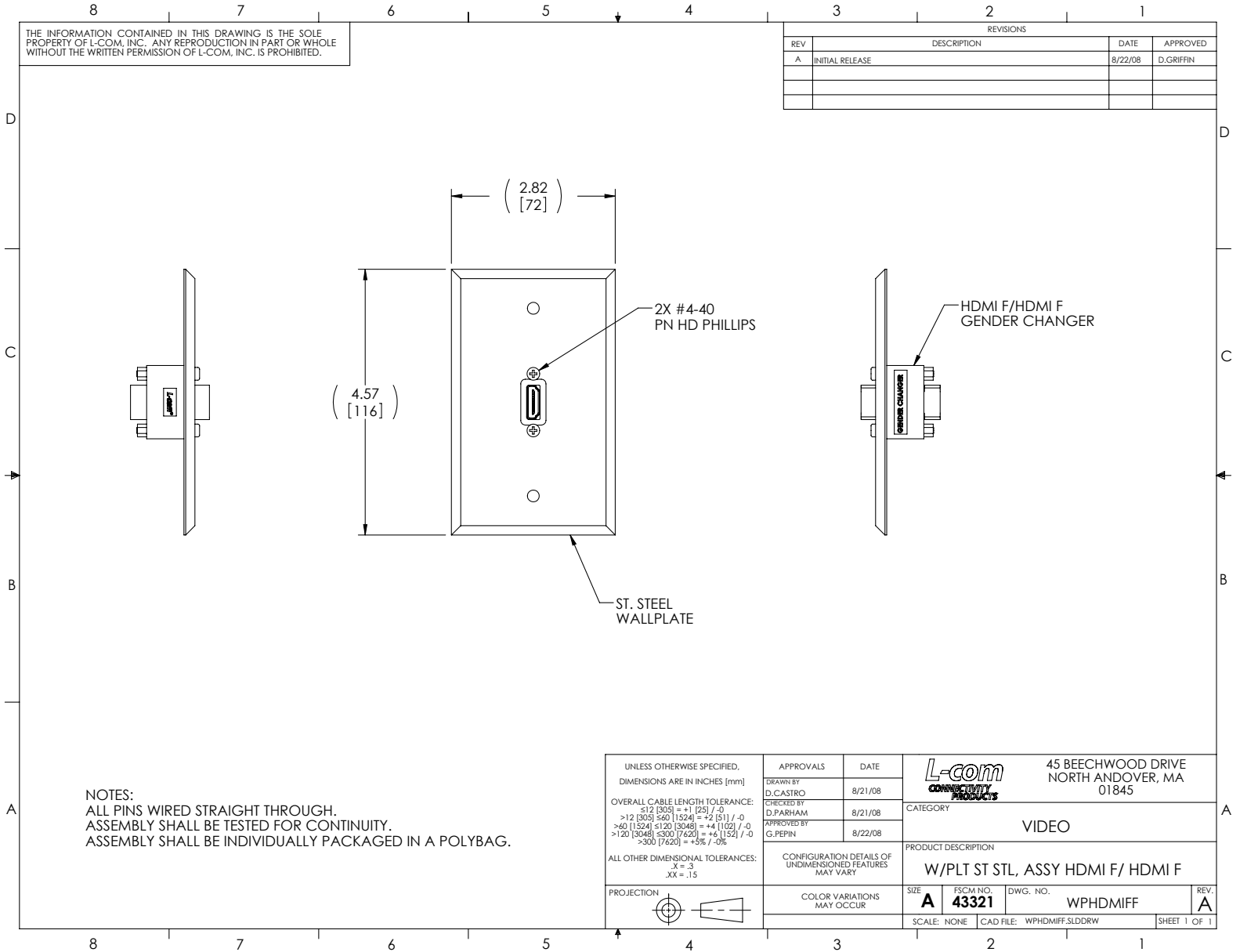

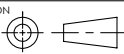


THE INFORMATION CONTAINED IN THIS DRAWING IS THE SOLE PROPERTY OF L-COM, INC. ANY REPRODUCTION IN PART OR WHOLE WITHOUT THE WRITTEN PERMISSION OF L-COM, INC. IS PROHIBITED.

REVISIONS			
REV	DESCRIPTION	DATE	APPROVED
A	INITIAL RELEASE	8/22/08	D.GRIFFIN



NOTES:
 ALL PINS WIRED STRAIGHT THROUGH.
 ASSEMBLY SHALL BE TESTED FOR CONTINUITY.
 ASSEMBLY SHALL BE INDIVIDUALLY PACKAGED IN A POLYBAG.

UNLESS OTHERWISE SPECIFIED, DIMENSIONS ARE IN INCHES [mm]	APPROVALS	DATE	 45 BEECHWOOD DRIVE NORTH ANDOVER, MA 01845
	DRAWN BY D.CASTRO	8/21/08	
OVERALL CABLE LENGTH TOLERANCE: ≤12 [305] = +1 [25] / -0 >12 [305] ≤60 [1524] = +2 [51] / -0 >60 [1524] ≤120 [3048] = +4 [102] / -0 >120 [3048] ≤300 [7620] = +6 [152] / -0 >300 [7620] = +5% / -0%	CHECKED BY D.PARHAM	8/21/08	CATEGORY VIDEO
	APPROVED BY G.PEPIN	8/22/08	PRODUCT DESCRIPTION W/PLT ST STL, ASSY HDMI F/ HDMI F
ALL OTHER DIMENSIONAL TOLERANCES: X = .3 XX = .15	CONFIGURATION DETAILS OF UNDIMENSIONED FEATURES MAY VARY	SIZE A	FSCM NO. 43321
PROJECTION 	COLOR VARIATIONS MAY OCCUR	DWG. NO. WPHDMIFF	REV. A
		SCALE: NONE	CAD FILE: WPHDMIFF.SLDRW
		SHEET 1 OF 1	