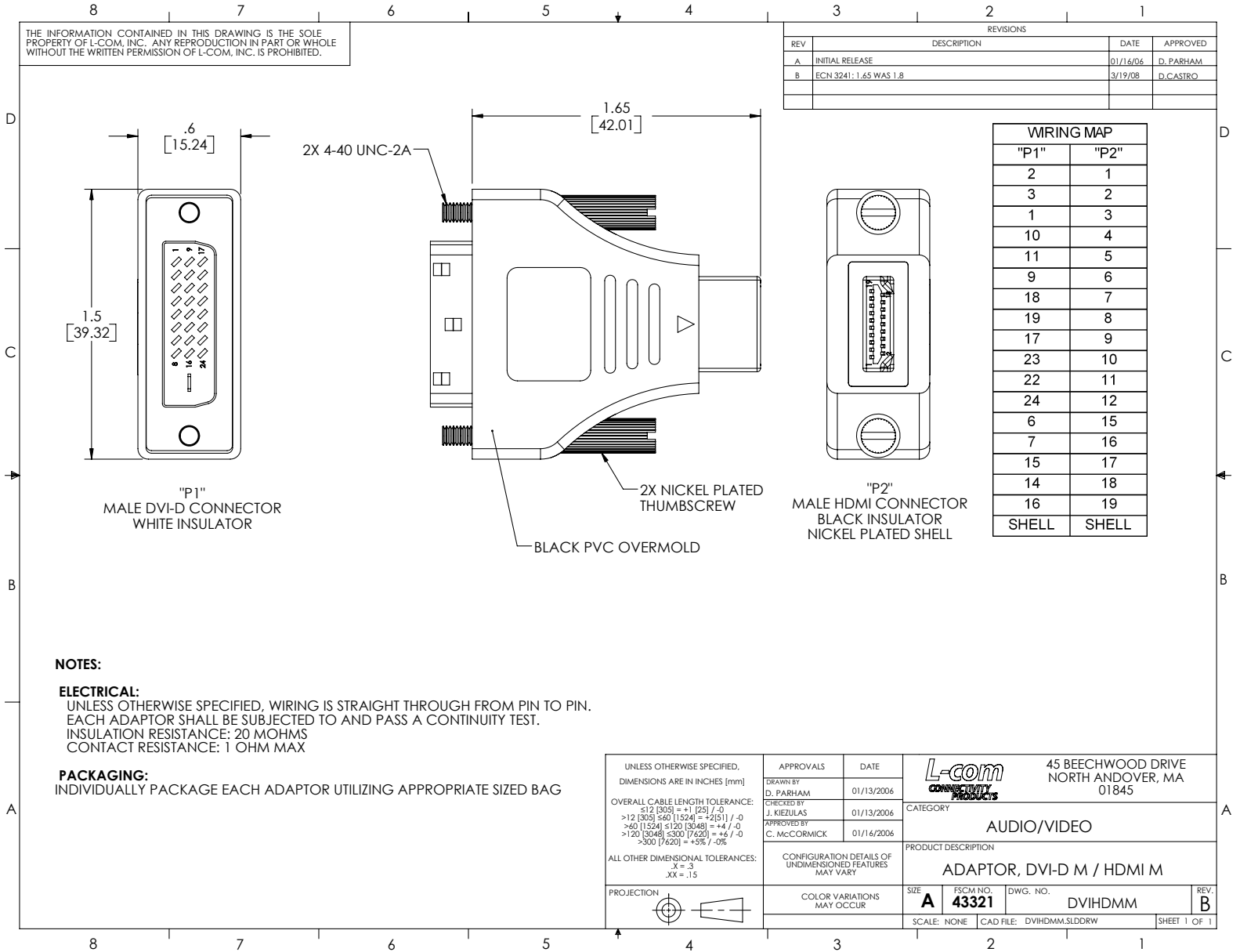


THE INFORMATION CONTAINED IN THIS DRAWING IS THE SOLE PROPERTY OF L-COM, INC. ANY REPRODUCTION IN PART OR WHOLE WITHOUT THE WRITTEN PERMISSION OF L-COM, INC. IS PROHIBITED.

REVISIONS			
REV	DESCRIPTION	DATE	APPROVED
A	INITIAL RELEASE	01/16/06	D. PARHAM
B	ECN 3241: 1.65 WAS 1.8	3/19/08	D. CASTRO



WRING MAP	
"P1"	"P2"
2	1
3	2
1	3
10	4
11	5
9	6
18	7
19	8
17	9
23	10
22	11
24	12
6	15
7	16
15	17
14	18
16	19
SHELL	SHELL

**NOTES:**

**ELECTRICAL:**  
 UNLESS OTHERWISE SPECIFIED, WIRING IS STRAIGHT THROUGH FROM PIN TO PIN.  
 EACH ADAPTOR SHALL BE SUBJECTED TO AND PASS A CONTINUITY TEST.  
 INSULATION RESISTANCE: 20 MOHMS  
 CONTACT RESISTANCE: 1 OHM MAX

**PACKAGING:**  
 INDIVIDUALLY PACKAGE EACH ADAPTOR UTILIZING APPROPRIATE SIZED BAG

UNLESS OTHERWISE SPECIFIED, DIMENSIONS ARE IN INCHES [mm]  OVERALL CABLE LENGTH TOLERANCE: ≤12 [305] ≤40 [1024] = +1 [25] / -0 >12 [305] ≤60 [1524] = -2 [51] / -0 >60 [1524] ≤120 [3048] = +4 / -0 >120 [3048] ≤300 [7620] = +6 / -0 >300 [7620] = +5% / -0%  ALL OTHER DIMENSIONAL TOLERANCES: .X = .3 .XX = .15  PROJECTION	APPROVALS DRAWN BY: D. PARHAM CHECKED BY: J. KIEZULAS APPROVED BY: C. MCCORMICK	DATE 01/13/2006 01/13/2006 01/16/2006	 45 BEECHWOOD DRIVE NORTH ANDOVER, MA 01845		
	CONFIGURATION DETAILS OF UNDIMENSIONED FEATURES MAY VARY  COLOR VARIATIONS MAY OCCUR	CATEGORY AUDIO/VIDEO  PRODUCT DESCRIPTION ADAPTOR, DVI-D M / HDMI M		SIZE <b>A</b>	FSCM NO. <b>43321</b>
SCALE: NONE		CAD FILE: DVIHDM.SLDDRW		SHEET 1 OF 1	