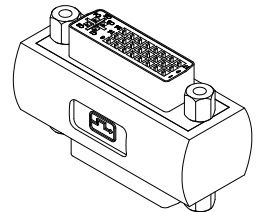
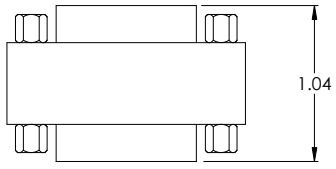
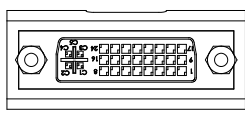
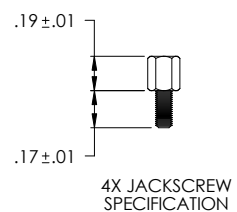
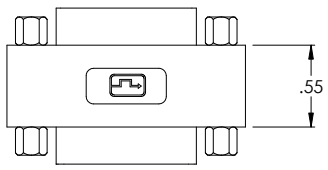
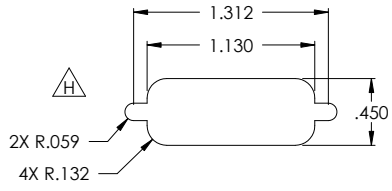
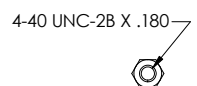
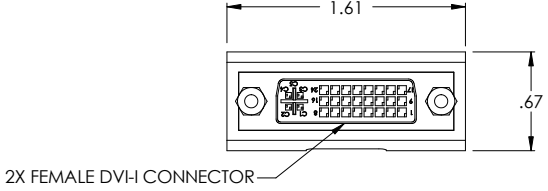


THE INFORMATION CONTAINED IN THIS DRAWING IS THE SOLE PROPERTY OF L-COM, INC. ANY REPRODUCTION IN PART OR WHOLE WITHOUT THE WRITTEN PERMISSION OF L-COM, INC. IS PROHIBITED.

REVISIONS			
REV	DESCRIPTION	DATE	APPROVED
E	CHANGED SCREW LENGTH (ECN1325)	03/12/03	DFF
F	ECN16641: ADDED COMPONENT SPECIFICATION TABLE	1/16/04	DFF
G	ECN2010: HOUSING MATL WAS PVC. ADDED UL94V-0 RATED	3/18/05	DFF
H	ECN#2101: EDITED PANEL CUT-OUT DIMENSIONS	06/08/05	MLAHEY



Component Specifications	
<b>Material</b>	
Housing	High Temperature Thermoplastic, UL94V-0 rated Color: Ivory
Connector Shell	SPCC
Connector Insulator	PBT
Connector Contact	Phosphor Bronze
Hardware	Brass or Steel
Internal Shielding	Copper foil
<b>Finish</b>	
Connector Shell	Tin over Nickel
Contact	Gold Flash
<b>Electrical</b>	
Current Rating	1.5 A @ 40 Vac
Voltage rating	150Vac (MAX)
Insulation Resistance	1000MΩ @ 500 VDC
Contact Resistance	20mΩ (MAX)
<b>Environmental</b>	
Operating Temperature range	-20°C to 85°C

CS-212

NOTE  
1. CONNECTORS ARE WIRED STRAIGHT THROUGH, PIN TO PIN.

UNLESS OTHERWISE SPECIFIED, DIMENSIONS ARE IN INCHES. TOLERANCES ARE:  
 .XX ± .01  
 .XXX ± .005  
 CABLE LENGTH TOLERANCE  
 <300' ±5% >300' ±2%

APPROVALS	DATE
DRAWN BY D. PARHAM	12/26/2002
CHECKED BY T. CLARK	01/03/2003
APPROVED BY R. CARRICK	01/10/2003

**L-com** 45 BEECHWOOD DRIVE  
NORTH ANDOVER, MA 01845

PRODUCT DESCRIPTION  
DVI-I BULKHEAD ADAPTOR

DRAWING TITLE  
OUTLINE DRAWING

CONFIGURATION DETAILS OF UNDIMENSIONED FEATURES MAY VARY

SIZE **A** FSCM NO. **43321** DWG. NO. **DMB605FF-OD1** REV. **H**

SCALE: NONE CAD FILE: DMB605FF-OD1.SLDDRW SHEET 1 OF 1