

Thank you for purchasing the Ember EM35x NCP Add-On Kit. Please read this *Quick Start Guide* to get up and running quickly. If you have any issues, refer to the "For More Information" section at the end of this guide.

# EM35x NCP Add-On Kit Quick Start Guide

Enhancing Products through Connectivity

ember

## 5. Changing the Adapter Properties

From InSight Desktop:

- A.** Select the ISA3 connected to the EM35x NCP Breakout Board.
- B.** Right-click on the adapter and select [Adapter Properties](#).
- C.** Select [EM357-EZSP](#) for radio processor.
- D.** Select [STM32F103RET](#) host for host processor.
- E.** Check [Protect from automatic discovery changes](#).
- F.** Click [OK](#).

## 6. Running the First-Time Setup Wizard

- A.** Launch ISD's First-Time Setup Wizard: click [Start First-time Setup](#) button or select [Help | First-time setup wizard](#).
- B.** Click [Next](#) and follow the on-screen instructions.
- C.** Click [Finish](#).

Place Hardware Identification List here

## 7. For More Information

Go to the Ember Developer Portal at <http://portal.ember.com>.

Copyright © 2010 Ember Corporation. All rights reserved. Ember is a registered trademark and the Ember logo and InSight are trademarks of Ember Corporation.

# 1. Unpacking the Contents



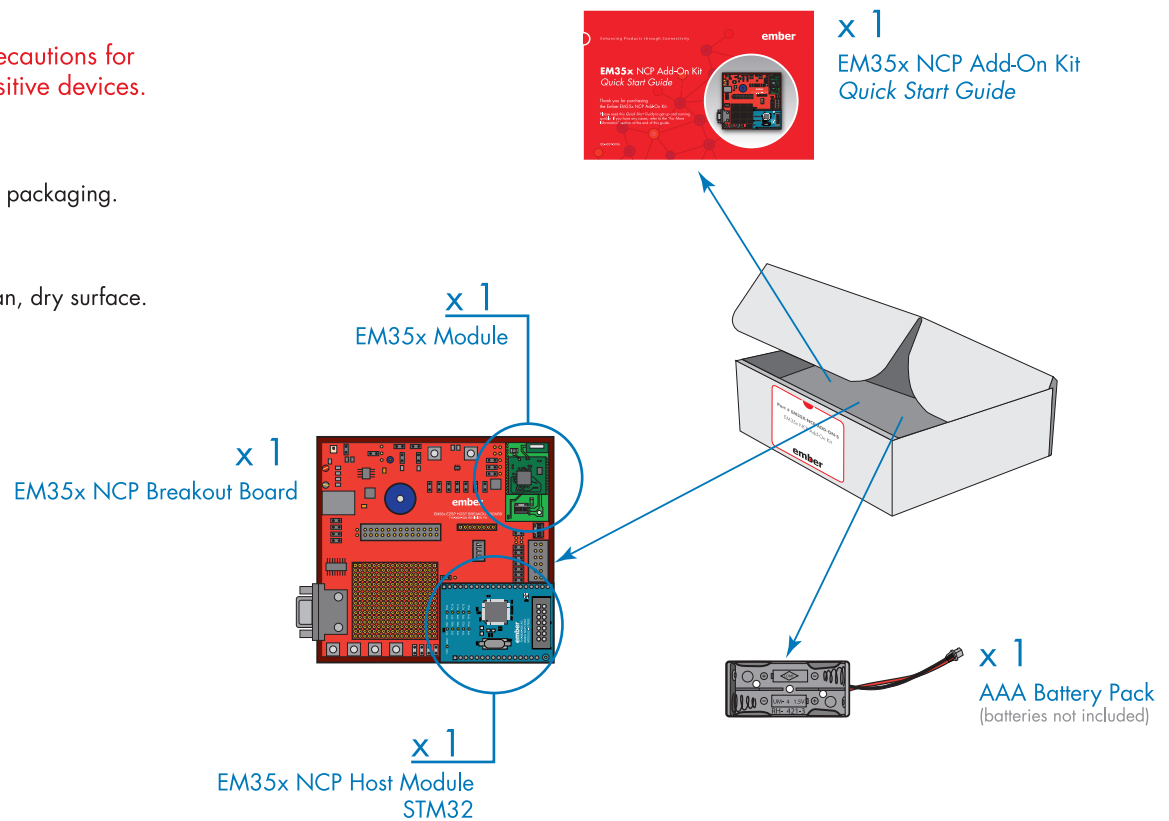
**ATTENTION:** Observe precautions for handling electrostatic sensitive devices.



Remove components from their packaging.



Place all components on a clean, dry surface.



# 2. Before You Begin

- Make sure the EM35x Development Kit is set up and running properly.

- Confirm that you have an internet connection.

# 3. Upgrading the Software



Launch Insight Desktop (ISD): [Start](#) | [All Programs](#) | [Ember](#) | [InSight Desktop](#) | [InSight Desktop](#).



Update to the latest Ember software: [Help](#) | [Update now](#). Click **OK** until prompted to restart. Then, restart ISD.



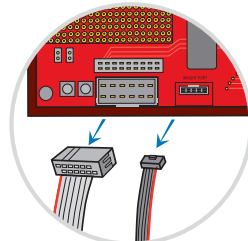
After restart, verify that ISD discovers the ISA3s. EM-ISA3-00, EM-ISA3-01, EM-ISA3-02 appear in the [Adapters view](#) | [Default Group](#).

# 4. Connecting the Hardware



Replace one EM35x Development Kit Breakout Board with the EM35x NCP Breakout Board.

1. On the EM35x Development Kit Board: disconnect ISP Cable from InSight Port and DEI Cable from DEI Port.



2. On the EM35x NCP Breakout Board: attach ISP Cable to InSight Port and DEI Cable to DEI Port.

