

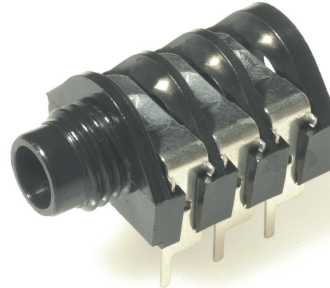
CLIFF

www.cliffcomponents.com

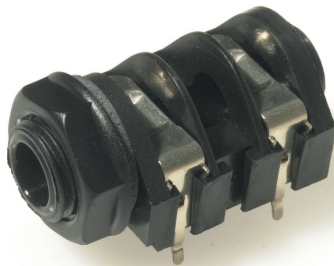
1/4" S2 Jack Sockets



S2 / BNB Solder Tag



S2 / BBB PC - A Special Nose



S2 / BNB PC - C Kinked



S2 / BBB PC - C Kinked

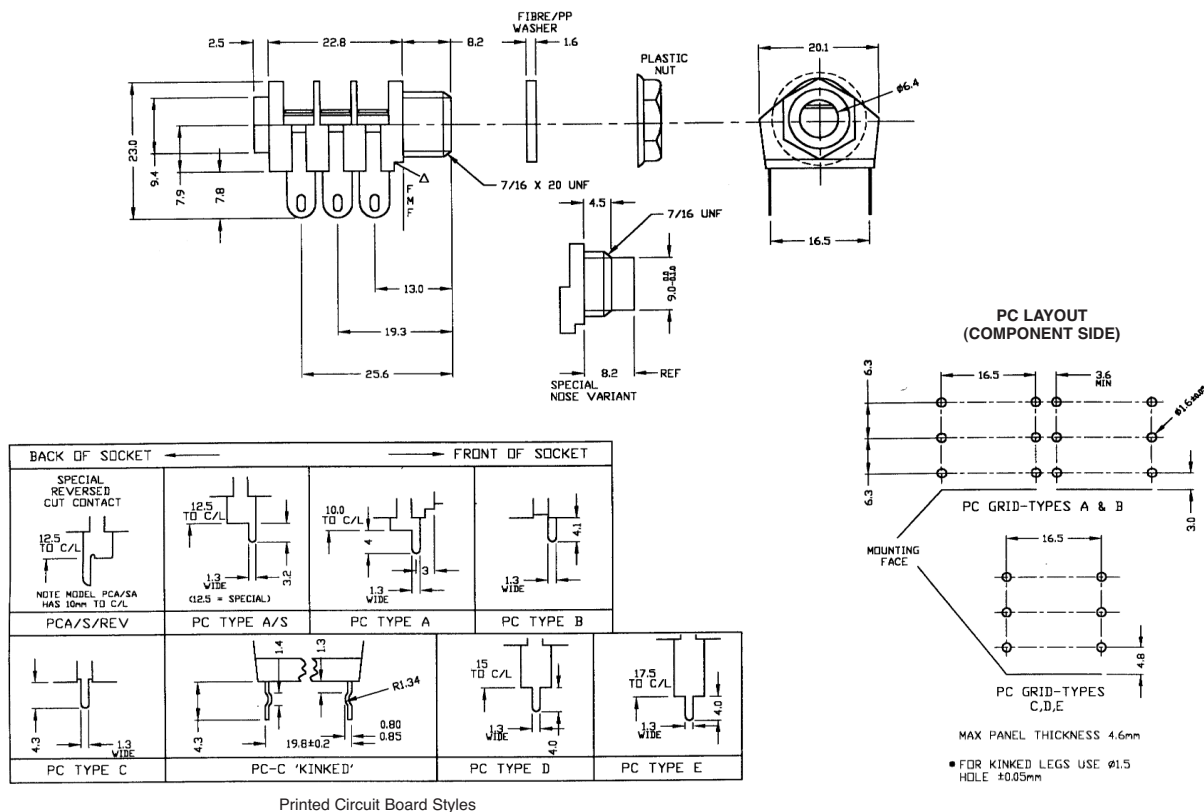
The **CLIFF**[®] range of S2 Jack Sockets incorporates our Patented Ni-Ag[®] Alloy Self-Cleaning Contacts for superior performance and reliability. All models consist of a durable premium quality nylon body. Mounting hardware is normally supplied unassembled. The S2 Jack Socket is available with optional chassis grounding in mono or stereo with unswitched, switched or make contacts and with a choice of either solder tag or six standard PCB mounting versions.

Significant features include:

- Patented Ni-Ag[®] Alloy Self-Cleaning Contacts for superior performance and reliability.
- Optional 'Kinked' Legs for snap-in PCB mounting on PC-A and PC-C styles to facilitate pre-assembly and wave soldering.
- Tough, molded Nylon body.
- Optional Chassis Grounding versions.

Cliff Electronic Components, Inc.
5610 S. Topeka Blvd., Suite C,
Topeka, KS 66609
Telephone: (785) 862-2543
Fax: (785) 862-5723
Email: sales@cliffusa.com

Cliff (Hong Kong) Limited
Room 1301, Seaview Commercial Building
21-24 Connaught Road West, Sheung Wan, Hong Kong
Telephone: (852) 2780 4576
Fax: (852) 2780 8535
Email: cliffhongkong@netvigator.com



Technical Data:

- Withstand voltage:** 2000V DC Min.
- Maximum Current:** 5 amps
- Temperature Rating:** -10° C to +70° C
- Life (Minimum):** 10,000+ Operations
- Nominal Contact Resistance:** <50mΩ

Specifications:

Designed to receive both mono and stereo 1/4" jack plugs, the S2 socket is molded in grade 1 black nylon and is supplied with a black nylon hexagonal mounting nut (standard) or optional nickel plated brass hexagonal and slotted ring nut. Colored nylon nuts are also available for identification purposes. Contacts can also be supplied with our special low noise Ni-Ag® 'ST' or Gold plating and in addition to the standard solder tag version, there are six different PCB mounting styles available. The S2 can also be supplied with prefitted EMI/RFI screen if required. When ordering, please state the contact arrangement required, with a plug inserted, using the following code from the front of the jack socket: B - Break, M - Make, S - Single, N - No Contact. For example, an S2/BMB Black is a 3-pole stereo jack socket, 1st contact - Break, 2nd contact - Make and third contact - Break.



S2 Colored Nut



S2 Hex Chrome Nut



Slotted Ring Nut



S2 EMI/RFI Screen