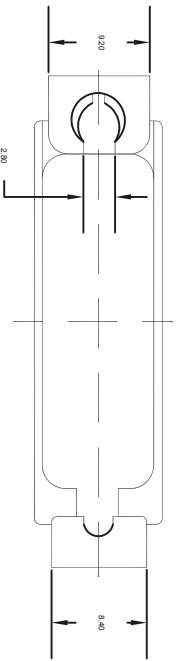
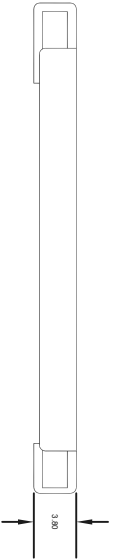
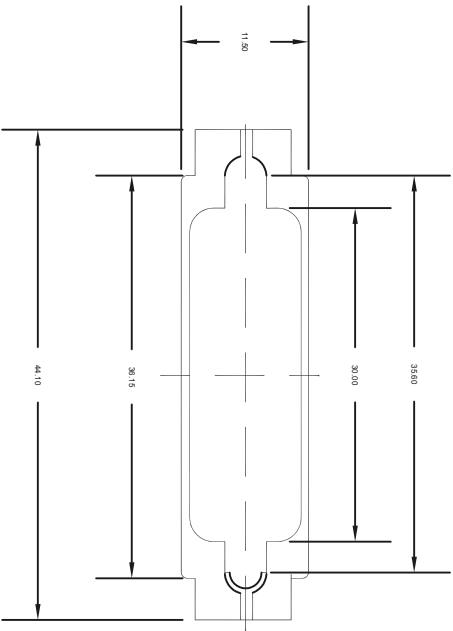




SPC  
TECHNOLOGY

ALL RIGHTS RESERVED. NO PORTION OF THIS PUBLICATION, WHETHER IN WHOLE OR IN PART CAN BE REPRODUCED WITHOUT THE EXPRESS WRITTEN CONSENT OF SPC TECHNOLOGY.  
SPC-F005.DWG

REVISONS		DOC. NO. SPC-F005	* Effective: 7/8/02	* DCP No: 1398				
DCP #	REV	DESCRIPTION	DRAWN	DATE	CHECKD	DATE	APPRVD	DATE
			AMU	16-08-10	MRD	18-08-10	XXX	25-08-10



NARROW TRACK

DISCLAIMER:  
ALL STATEMENTS AND TECHNICAL INFORMATION CONTAINED HEREIN ARE BASED UPON INFORMATION AND/OR TESTS WE BELIEVE TO BE ACCURATE AND RELIABLE. SINCE CONDITIONS OF USE ARE BEYOND OUR CONTROL, THE USER SHALL DETERMINE THE SUITABILITY OF THE PRODUCT FOR THE INTENDED USE AND ASSUME ALL RISK AND LIABILITY WHATSOEVER IN CONNECTION THEREWITH.

TOLERANCES:  
UNLESS OTHERWISE SPECIFIED, DIMENSIONS ARE FOR REFERENCE PURPOSES ONLY.

DRAWN BY: AMU  
CHECKED BY: MRD  
APPROVED BY: XXX

DATE: 16-08-10  
DATE: 18-08-10  
DATE: 25-08-10

DRAWING TITLE: Narrow Track

Narrow Track

SIZE: XXX

DWG. NO. XXX

ELECTRONIC FILE 84n1369

REV A

SCALE: NTS  
U.O.M.: INCHES [mm]

SHEET: 1 OF 1

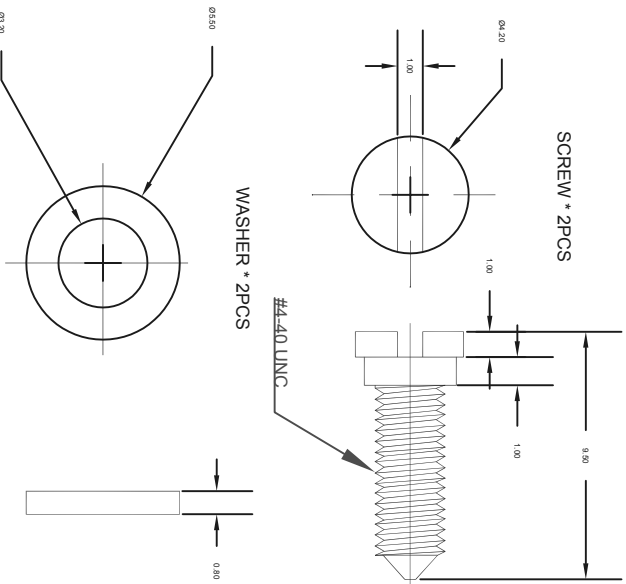
SHEET: 1 OF 1

SHEET: 1 OF 1

Dimensions : Inches (mm)

Part Number Table

Description	Part Number
Narrow Track	SPC21089



Specifications:

1. Narrow Track: Stainless Steel
2. Screw: Steel, Yellow Chrome Plated
3. Flat Washer: Steel, Yellow Chrome Plated

