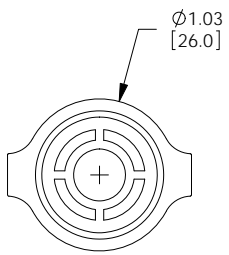
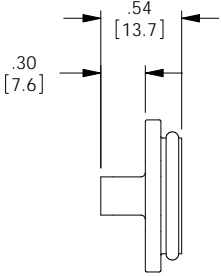
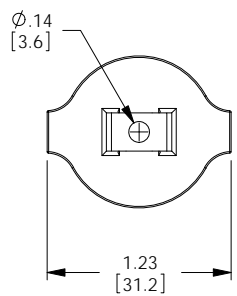
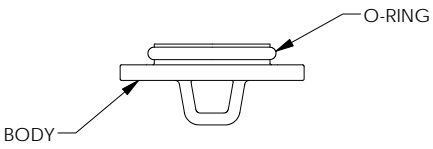


THE INFORMATION CONTAINED IN THIS DRAWING IS THE SOLE PROPERTY OF L-COM, INC. ANY REPRODUCTION IN PART OR WHOLE WITHOUT THE WRITTEN PERMISSION OF L-COM, INC. IS PROHIBITED.

REVISIONS			
REV	DESCRIPTION	DATE	APPROVED
A	INITIAL RELEASE	4/25/07	C. BERUBE
B	ECN 5131: CREATE MODEL AND NEW DRAWING FORMAT	11/9/10	D. FRISIELLO



NOTES:  
 MATERIAL:  
 BODY: THERMOPLASTIC, BLACK.  
 O-RING: RUBBER, BLACK.  
 ALL DIMENSIONS ARE FOR REFERENCE ONLY.  
 COMPONENT SHALL BE INDIVIDUALLY PACKAGED IN  
 IN ACCORDANCE WITH L-COM SPECIFICATION PS-0031.

RoHS Compliant ✓

UNLESS OTHERWISE SPECIFIED, DIMENSIONS ARE IN INCHES [mm] DIMENSIONAL TOLERANCES: .X = ±.1 .XX = ±.02 .XXX = ±.005 ANGULAR TOLERANCES: ALL = ± 1°	APPROVALS	DATE		45 BEECHWOOD DRIVE NORTH ANDOVER, MA 01845
	DRAWN BY D. FRISIELLO	11/9/10		CATEGORY MODULAR
PROJECTION	CHECKED BY D. PARHAM	11/9/10	PRODUCT DESCRIPTION JACK COVER IP67	
	APPROVED BY D. GALLAGHER	11/9/10	SIZE <b>A</b> FSCM NO. <b>43321</b> DWG. NO. <b>WT67RC</b> REV. <b>B</b> SCALE: NONE    CAD FILE: WT67RC.SLDDRW    SHEET 1 OF 1	