



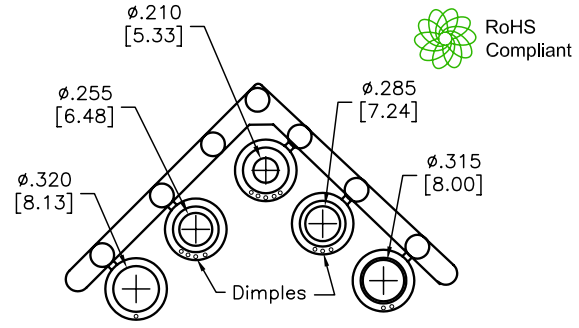
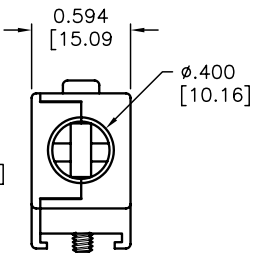
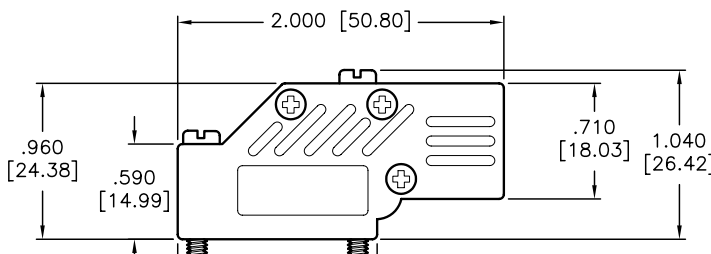
ALL RIGHTS RESERVED. NO PORTION OF THIS PUBLICATION, WHETHER IN WHOLE OR IN PART, CAN BE REPRODUCED WITHOUT THE EXPRESS WRITTEN CONSENT OF SPC TECHNOLOGY.

SPC-F005.DWG

REVISIONS

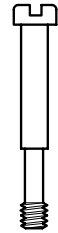
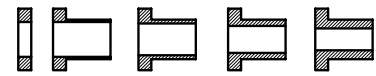
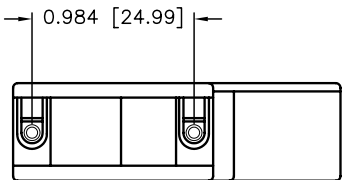
DOC. NO. SPC-F005 * Effective: 7/8/02 * DCP No: 1398

DCP #	REV	DESCRIPTION	DRAWN	DATE	CHECKD	DATE	APPRVD	DATE
1789	A	RELEASED	DCM	9/15/06	TUL	1/4/07	JWM	1/4/07

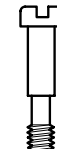


Connector Cover
- Material: Zinc Alloy
- Finish: Nickel Plated

Compression Inserts
Material: Thermoplastic
Color: Black
Durometer: 75±5 Type A Per ASTM D2240



#4-40 x 1.140", Slotted Captive Screw, Low Carbon Steel, Nickel Plated (1 Ea.)



#4-40 x 0.770", Slotted Captive Screw, Low Carbon Steel, Nickel Plated (1 Ea.)



#2-56 Phillips Head Machine Screw, Stainless Steel (3 Ea.)

DISCLAIMER:
ALL STATEMENTS AND TECHNICAL INFORMATION CONTAINED HEREIN ARE BASED UPON INFORMATION AND/OR TESTS WE BELIEVE TO BE ACCURATE AND RELIABLE. SINCE CONDITIONS OF USE ARE BEYOND OUR CONTROL, THE USER SHALL DETERMINE THE SUITABILITY OF THE PRODUCT FOR THE INTENDED USE AND ASSUME ALL RISK AND LIABILITY WHATSOEVER IN CONNECTION THEREWITH.

TOLERANCES:
UNLESS OTHERWISE SPECIFIED, DIMENSIONS ARE FOR REFERENCE PURPOSES ONLY.

DRAWN BY:	DATE:
Dan McVicker	9/15/06
CHECKED BY:	DATE:
Tom Lee	1/4/07
APPROVED BY:	DATE:
Jeff McVicker	1/4/07

DRAWING TITLE: 9 Pin, Right Angle, Low Profile D-Sub Cover			
SIZE	DWG. NO.	ELECTRONIC FILE	REV
A	SPC20348	84K8881.dwg	A
SCALE: NTS	U.O.M.: INCHES [mm]	SHEET: 1 OF 1	