

MS27501 and MS27502 Protective Covers



**MIL-DTL-38999
Series I**

MS27501 B 19 C L

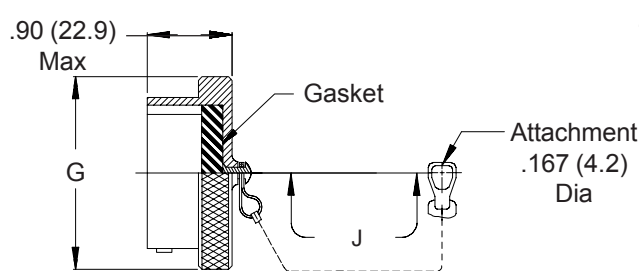
Basic Part No. _____
 MS27501 = Plug Cover
 MS27502 = Receptacle Cover

Finish _____
 A = Gold Iridite Over Cadmium Over Nickel
 B = 500 Hour Cadmium Olive Drab
 C = Anodize
 F = Electroless Nickel

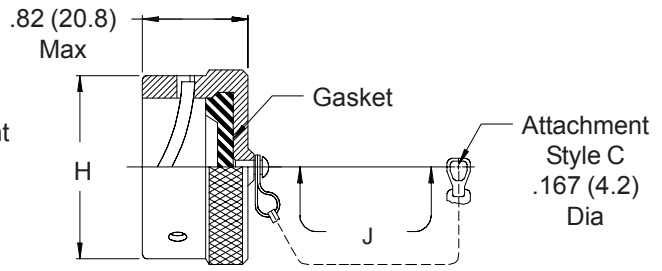
Dash No. _____

Length (Omit for Standard)
 L = 5.0 (127.0)
 M = 6.0 (152.4) MS27501 Only
 N = 7.0 (177.8) MS27501 Only

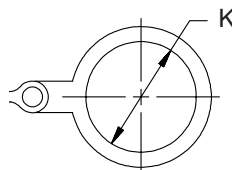
Attachment Style
 A = No Attachment
 C = Chain
 N = Chain with Ring (MS27502 Only)



MS27501 Plug Cover



MS27502 Receptacle Cover



MS27502 Attachment Type N

TABLE I

Shell Size	G Dia Max	H Max	J Nom Length	K Dia Min
9	.820 (20.8)	.82 (20.8)	3.00 (76.2)	.70 (17.8)
11	.940 (23.9)	.94 (23.9)	3.00 (76.2)	.84 (21.3)
13	1.070 (27.2)	1.10 (27.9)	3.50 (88.9)	1.01 (25.7)
15	1.190 (30.2)	1.22 (31.0)	3.50 (88.9)	1.14 (29.0)
17	1.320 (33.5)	1.34 (34.0)	3.50 (88.9)	1.26 (32.0)
19	1.440 (36.6)	1.46 (37.1)	3.50 (88.9)	1.39 (35.3)
21	1.570 (39.9)	1.58 (40.1)	4.00 (101.6)	1.51 (38.4)
23	1.690 (42.9)	1.70 (43.2)	4.00 (101.6)	1.64 (41.7)
25	1.820 (46.2)	1.83 (46.5)	4.00 (101.6)	1.76 (44.7)

1. For complete dimensions see applicable Military Specification.
2. Metric dimensions (mm) are indicated in parentheses.