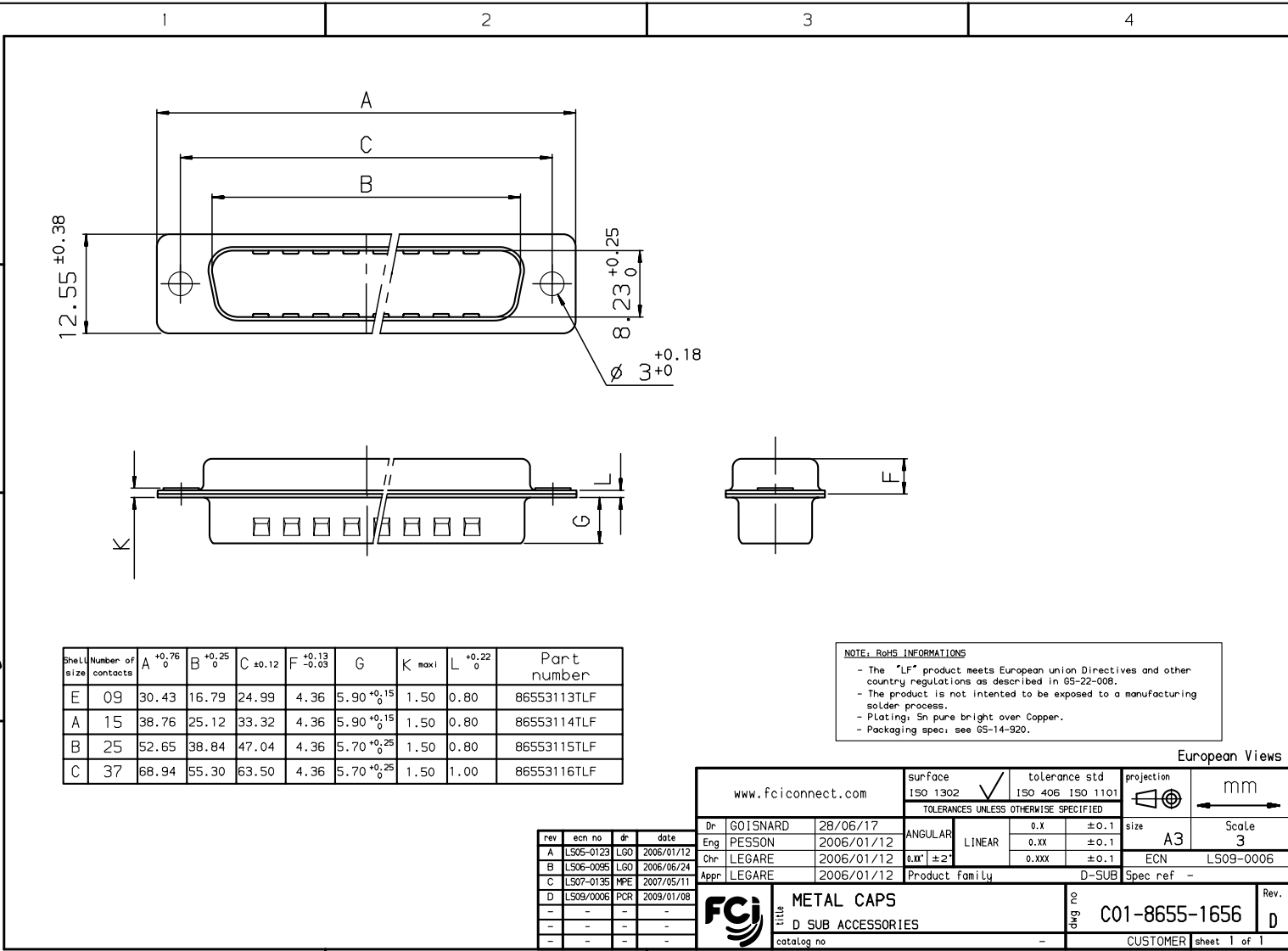


Copyright FCI.



| Shell size | Number of contacts | A $^{+0.76}_0$ | B $^{+0.25}_0$ | C ± 0.12 | F $^{+0.13}_{-0.03}$ | G | K max | L $^{+0.22}_0$ | Part number |
|------------|--------------------|----------------|----------------|----------|----------------------|-------------------|-------|----------------|-------------|
| E | 09 | 30.43 | 16.79 | 24.99 | 4.36 | 5.90 $^{+0.15}_0$ | 1.50 | 0.80 | 86553113TLF |
| A | 15 | 38.76 | 25.12 | 33.32 | 4.36 | 5.90 $^{+0.15}_0$ | 1.50 | 0.80 | 86553114TLF |
| B | 25 | 52.65 | 38.84 | 47.04 | 4.36 | 5.70 $^{+0.25}_0$ | 1.50 | 0.80 | 86553115TLF |
| C | 37 | 68.94 | 55.30 | 63.50 | 4.36 | 5.70 $^{+0.25}_0$ | 1.50 | 1.00 | 86553116TLF |

NOTE: RoHS INFORMATIONS

- The "LF" product meets European union Directives and other country regulations as described in 65-22-008.
- The product is not intended to be exposed to a manufacturing solder process.
- Plating: Sn pure bright over Copper.
- Packaging spec: see 65-14-920.

| rev | ecn no | dr | date |
|-----|-----------|-----|------------|
| A | LS05-0123 | LGO | 2006/01/12 |
| B | LS06-0095 | LGO | 2006/06/24 |
| C | LS07-0135 | MPE | 2007/05/11 |
| D | LS09/0006 | PCR | 2009/01/08 |

| | | | | | |
|---|----------|---------------------|-----------------------------------|------------------|------------------|
| www.fciconnect.com | | surface ISO 1302 | tolerance std ISO 406 ISO 1101 | projection A3 | mm Scale 3 |
| TOLERANCES UNLESS OTHERWISE SPECIFIED | | | | | |
| Dr | GOISNARD | 28/06/17 | ANGULAR | 0.X | ± 0.1 |
| Eng | PESSON | 2006/01/12 | LINEAR | 0.XX | ± 0.1 |
| Chr | LEGARE | 2006/01/12 | 0.XX | 0.XXX | ± 0.1 |
| Appr | LEGARE | 2006/01/12 | Product family D-SUB Spec ref - | | |
| FCI title METAL CAPS D SUB ACCESSORIES | | | drawing no C01-8655-1656 | | Rev. D |
| catalog no | | | CUSTOMER sheet 1 of 1 | | |

REV F - 2006-04-17