

## Splice Insulators & Insulating Covers

Quick and dependable way to insulate and waterproof motor lead connections up to 5KV.

### Medium-Voltage Motor Stub Splice Insulator

- Installs in seconds
- Flame retardant
- Flexible boot and impact-resistant cap
- Long lasting and reusable
- Waterproof and abrasion resistant
- One size fits all hookups — reduces inventory
- Enables easy inspection of connection



Shrink-Kon

This first-generation multi-splice insulator is designed to give you a quick, dependable means of protecting medium-voltage motor stub splice connections up to 5kV. You can install it in seconds simply by pushing the cover and boot together. Once installed, it completely waterproofs the connection and provides excellent protection against abrasion or mechanical abuse.

#### One size reduces inventory

The insulator accommodates wire sizes #8–2/0 AWG having outer diameters of .375" to .840". This range-taking feature should accommodate all of your medium-voltage motor hookups.

#### Inspectable and reusable

The insulator consists of just two parts: an elastomer boot and thermoplastic cap. The boot has two tapered cable entry legs that fit snugly around the cable to form a watertight seal. The legs are designed to be trimmed during installation to fit the required cable size tightly. The cap simply pushes into a groove in the boot — and pulls out easily when you want to inspect the connection. Removal of the cap does not disturb the seal around the cables, nor does it interrupt the bolted splice connection.

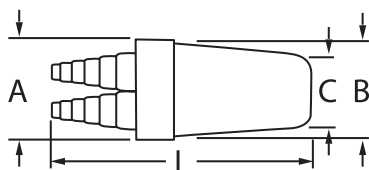
#### Quality engineered

The boot is made of flexible, abrasion-resistant elastomer, and the cap is made of high impact-resistant thermoplastic — high-performance materials you can depend on. Use the insulator for pigtail applications in motor junction boxes, manholes or wherever a waterproof, impact-resistant insulator is required.



#### Specifications

- 5KV Wire Range: #8 AWG–2/0
- Rating: 90° C Applications
- UL Listed to: 600V
- CSA Certified to: 600V
- T&B Recommended to: 5000V@90° C
- Material: Cap — NORYL, U.L. 94V-1  
Boot — EPDM Elastomer, U.L. 94V-2  
Lubricant — Silicone Grease



#### Wide Range Splice



CAT. NO.	WIRE RANGE	INSULATION O.D. RANGE (IN.)	BOLT MAX. LENGTH (IN.)	LENGTH L (IN.)	DIA. A (IN.)	DIA. B (IN.)	DIA. C (IN.)	STD. PKG. QTY.
MSCV20	8-2/0 AWG	.38–.84	1.25	6.5	3	22.03	2	5

Order in multiples of std. pkg.

**United States**  
Tel: 901.252.8000  
800.816.7809  
Fax: 901.252.1354

**Canada**  
Tel: 450.347.5318  
Fax: 450.347.1976

**Technical Services**  
Tel: 888.862.3289

**Thomas & Betts**

www.tnb.com

## Splice Insulators & Insulating Covers

Shrink-Kon®



### Quick-Seal Multi-Splice Insulators

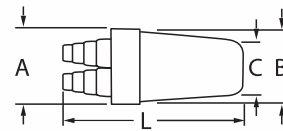
- Fast and easy to use
- Reusable insulator snaps closed and can be opened for inspection
- 600V at 90° C

All-purpose quick-seal multi-splice can be used wherever a watertight insulator is needed in motor junction boxes, manholes, street lighting, bridges, machines, rooftop air conditioning, airport lighting, as well as in marine use. The insulator is a two-piece design, an abrasion-resistant elastomer cable entry boot and a high impact-resistant thermoplastic quick-seal cap. Installs in seconds, completely waterproof, long-lasting, reusable, inspectable, flame-retardant, impact-resistant, range-taking, inexpensive, and totally dependable.

#### ..... Specifications .....

##### Material

- Cap: NORYL, U.L. 94V-1\
- Boot: EPDM Elastomer, UL 94V-2
- Lubricant Silicone Grease



### Quick-Seal Splice Insulators

CAT. NO.	WIRE RANGE	INSULATION O.D. RANGE (IN.)	LENGTH L (IN.)	DIA. A (IN.)	DIA. B (IN.)	DIA. C (IN.)	BOLT SIZE	CONN. SIZE	MAX. LG.	MAX. WD.	STD. PKG. QTY.
							MAX. DIA.	MAX. LG.			
MSLT 8	14-8	.15-.28	2.625	1.22	1.03	.813	.25	.50	1.25	.50	10
MSLT 1	6-1	.20-.52	3.625	1.81	1.53	1.25	.38	.75	1.75	.70	5

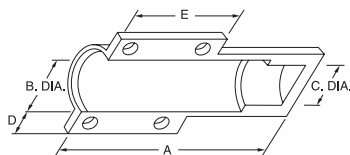
\*Order multiple is std. pkg.



### Motor Stub Splice Insulators

- Re-enterable waterproof motor stub insulator
- Easy installation
- No special tools required
- Permits inspection of connector joint by simply removing the snap on cap, wide cable range, long life

This innovative product has been designed to insulate motor stub splices quickly, easily, and dependably. It consists of a boot-type insulator with integral TY-RAP® cable ties. To install, simply position the insulator over the bolted splice and tighten the cable ties. That's all there is to it. It produces uniform, high-quality installations every time... in about 30 seconds. The completed installation is immediately ready for inspection and use. If required, the insulator can be easily removed. Simply snip the cable ties and slide the insulator off the splice. It leaves no sticky residue.



#### ..... Specifications .....

- \*One TY-RAP cable tie only
- UL File E9809. UL and CSA Certified (94V-1 Flammability Class)
- Rated for 600V and 90° C application

##### Material

- Body: Modified Neoprene Elastomer
- Straps: Nylon

### Motor Stub Splice Insulators

CAT. NO.	WIRE RANGE	LENGTH (IN.)	BOLT MAX. A (IN.)	B DIA. (IN.)	C DIA. (IN.)	D (IN.)	E (IN.)	STD. PKG. QTY.
MSC14*	#14-#10	3.38	1.5	.56	.50	.38	.35	15
MSC8	#12-#8	3.38	2.39	.73	.67	.38	1.20	10
MSC2	#12-#2	.75	3.25	.95	.88	.38	1.5	10
MSC20	#2-2/0	1.5	4.25	1.39	1.05	.43	1.70	4
MSC250	3/0-300 MCM	1.5	7.56	1.88	1.80	.45	1.90	2
MSC500	350-500 MCM	1.75	8.88	2.56	2.48	.45	2.10	5

Order in multiples of std. pkg.

