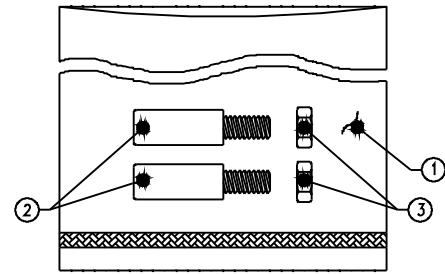
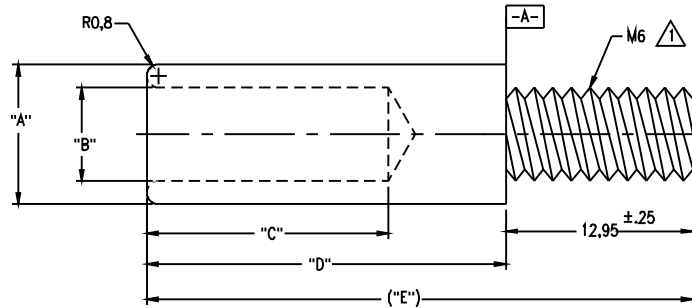


DWG NO Ref. US 070B84958 1

N° de pièce US	N° de pièce CH	DIM. "A"	DIM. "B"	DIM. "C"	DIM. "D"	DIM. "E" (REF)
070B84958-01		29.50	26.40/6.35	TBD	24.50	(37.45)
070B84958-02	03860	211h8 (±0,027)	27.90/7.85	16.5	19.45	(32.40)
070B84958-03		29.5	26.40/6.35	TBD	18.30	(31.25)

REVISIONS			
REV	DESCRIPTION	DATE	APPROVED

NOTES:
 ▲ FULL THREADS TO DATUM SURFACE A. OPTION- UNDER CUT ONE THREAD.
 Filetage complet jusqu'à la surface A. Option- gorge sur 1 filet
 L'extérieur de la pièce (øA) est brut



Kit : part number 20450

QTY	FIND	PART OR IDENTIFYING NO.	NOMENCLATURE OR DESCRIPTION
2	3	10725	NUT, M6
2	2	070B84958-02	PLUG-IN TERMINAL RECEPTACLE (STAND-OFF TYPE/.310 DIA.)
1	1	76mmx106mm	PLASTIC BAG
20450			

CONFIDENTIAL

EATON CORPORATION CLAIMS ALL RIGHTS IN THE INFORMATION ON THIS DRAWING WHICH IS ISSUED IN CONFIDENCE AND IS NOT TO BE USED OR REPRODUCED EXCEPT AS NECESSARY IN SUPPLYING/PURCHASING A PRODUCT OR SERVICE TO/FROM EATON.

MATERIAL:
 Loton 39Pb3/ Brass 39Pb3
 FINISH:
 Argenture 5-10?/ Silvering 5-10?

SIGNATURES	DATE
DRAWN SF	08.09.2005
CHECKED W.Brillord	08.09.2005
ENG	
MFG	
QA	

UNLESS OTHERWISE SPECIFIED TOLERANCES ARE:
 INCHES .XX ± .01
 .XXX ± .005
 MILLIMETRE .X ± .2
 .XX ± .15
 ANGLES ± 1°

EATON COMMERCIAL CONTROLS DIVISION SALISBURY PLANT

BORNES PLUG-IN RECEPTACLE

SIZE B	FSCW NO. 74193	DWG NO. SK-29203-Y4	REV
SCALE 4/1	ECO#	SHEET 1 OF 1	