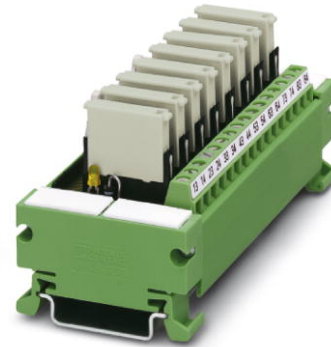


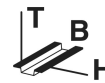
## UM 45- 8RM/MR-G24/1/PLC


Order No.: 2962900



<http://eshop.phoenixcontact.de/phoenix/treeViewClick.do?UID=2962900>

VARIOFACE COMPACT LINE, output module with 8 miniature relays, 1 N/O contact each, plugged, for 24 V DC (incl. relay)



Commercial data	
GTIN (EAN)	
Note	Made-to-order
sales group	I640
Pack	1 pcs.
Customs tariff	85364190
Catalog page information	Page 246 (IF-2009)

<http://www.download.phoenixcontact.com>  
Please note that the data given here has been taken from the online catalog. For comprehensive information and data, please refer to the user documentation. The General Terms and Conditions of Use apply to Internet downloads.

Technical data	
<b>Input data</b>	
Nominal input voltage $U_N$	24 V DC
Input voltage range in reference to $U_N$	0.8 ... 1.1
Typical input current at $U_N$	6.5 mA
Typical response time	5 ms
Typical release time	15 ms
Type of protection	Free-wheeling diode
Protective circuit/component	Damping diode

Operating voltage display	Green LED
Status display/channel	Yellow LED

#### Output data

Contact type	1 N/O contact (double contact)
Contact material	AgNi, 5 µm hard gold-plated
Maximum switching voltage	250 V AC
	125 V DC
Minimum switching voltage	5 V
Limiting continuous current	3 A
Maximum inrush current	5 A
Min. switching current	1 mA
Interrupting rating (ohmic load) max.	72 W (24 V DC)
	60 W (48 V DC)
	50 W (60 V DC)
	50 W (110 V DC)
	750 VA (250 V AC)

#### General data

No. of channels	8
Compatible components	Miniature relay, REL-MR-G 24/1
With components	Yes
Width	103 mm
Height	45 mm
Depth	50 mm
Ambient temperature (operation)	-20 °C ... 50 °C
Ambient temperature (storage/transport)	-20 °C ... 70 °C
Test voltage	2 kV AC (50 Hz, 1 min.)
Mechanical service life	2 x 10 <sup>7</sup> cycles
Standards/regulations	IEC 60664
	DIN EN 50178
	IEC 62103
Operating mode	100% operating factor
Mounting position	Any
Assembly instructions	In rows with zero spacing
Pollution degree	2

Surge voltage category	III
Housing insulation material	PVC, side panel PA non-reinforced,
Color	green

#### Connection data

Connection 1	Coil side
Type of connection	Flat-ribbon cable plug connector in acc. with IEC 60603-13
Number of positions	14
Connection 2	Contact side
Type of connection	Screw connection
Number of positions	3
Conductor cross section solid min.	0.14 mm <sup>2</sup>
Conductor cross section solid max.	1.5 mm <sup>2</sup>
Conductor cross section stranded min.	0.14 mm <sup>2</sup>
Conductor cross section stranded max.	1.5 mm <sup>2</sup>
Conductor cross section AWG/kcmil min.	26
Conductor cross section AWG/kcmil max	14
Screw thread	M3
Stripping length	8 mm

#### Certificates / Approvals



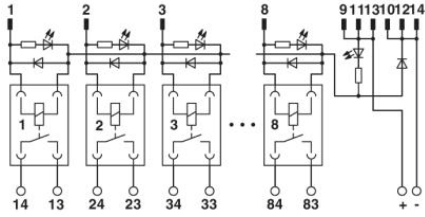
Certification GOST

#### Accessories

Item	Designation	Description
<b>General</b>		
2961037	REL-MR-G 24/1	Pluggable replacement miniature relay, 1 N/O contact, input voltage 24 V DC

## Diagrams/Drawings

### Circuit diagram



**Address**

PHOENIX CONTACT Deutschland GmbH  
Flachsmarktstr. 8  
32825 Blomberg, Germany  
Phone +49 5235 3 12000  
Fax +49 5235 3 41200  
<http://www.phoenixcontact.de>



© 2011 Phoenix Contact  
Technical modifications reserved;