

# CY3280-28XXX UNIVERSAL CAPSENSE™ CONTROLLER DEVELOPMENT KIT QUICK START GUIDE

This kit needs to be plugged into the CY3280-SLM Linear Slider Module Kit to get started. For information on CY3280-SLM, visit [www.cypress.com](http://www.cypress.com).

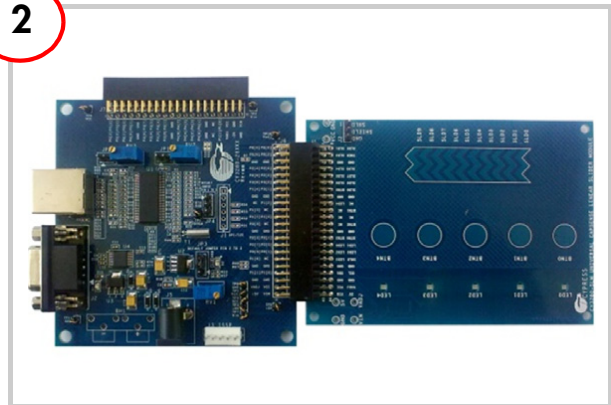
1



## Install Software

Install Software PSoC Programmer and PSoC Designer

2



## Kit Setup

- Connect the CY3280-SLM Module with the CY3280-28XXX Board
- Place shunts on pins 2 and 3 of JP1 and pins 1 and 2 of JP4 of CY3280-28XXX Board
- Place shunt on pins 2 and 3 of JP2 on CY3280-SLM module

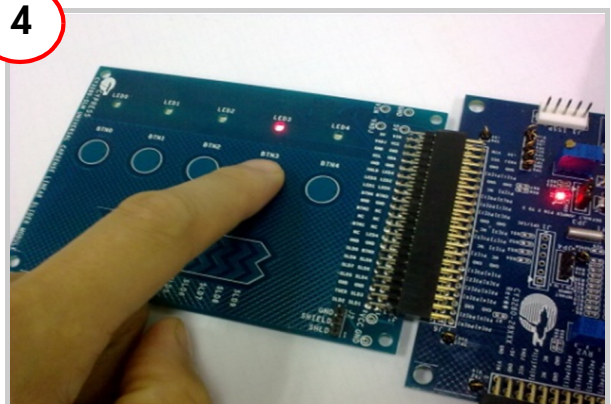
3



## Program the Board

- Connect your computer to the CY3280-28XXX by the PSoC MiniProg and a USB cable
- Program the board with the file CY3280\_28XXX\_SLM.hex on the CD
- Power on the board with external power supply

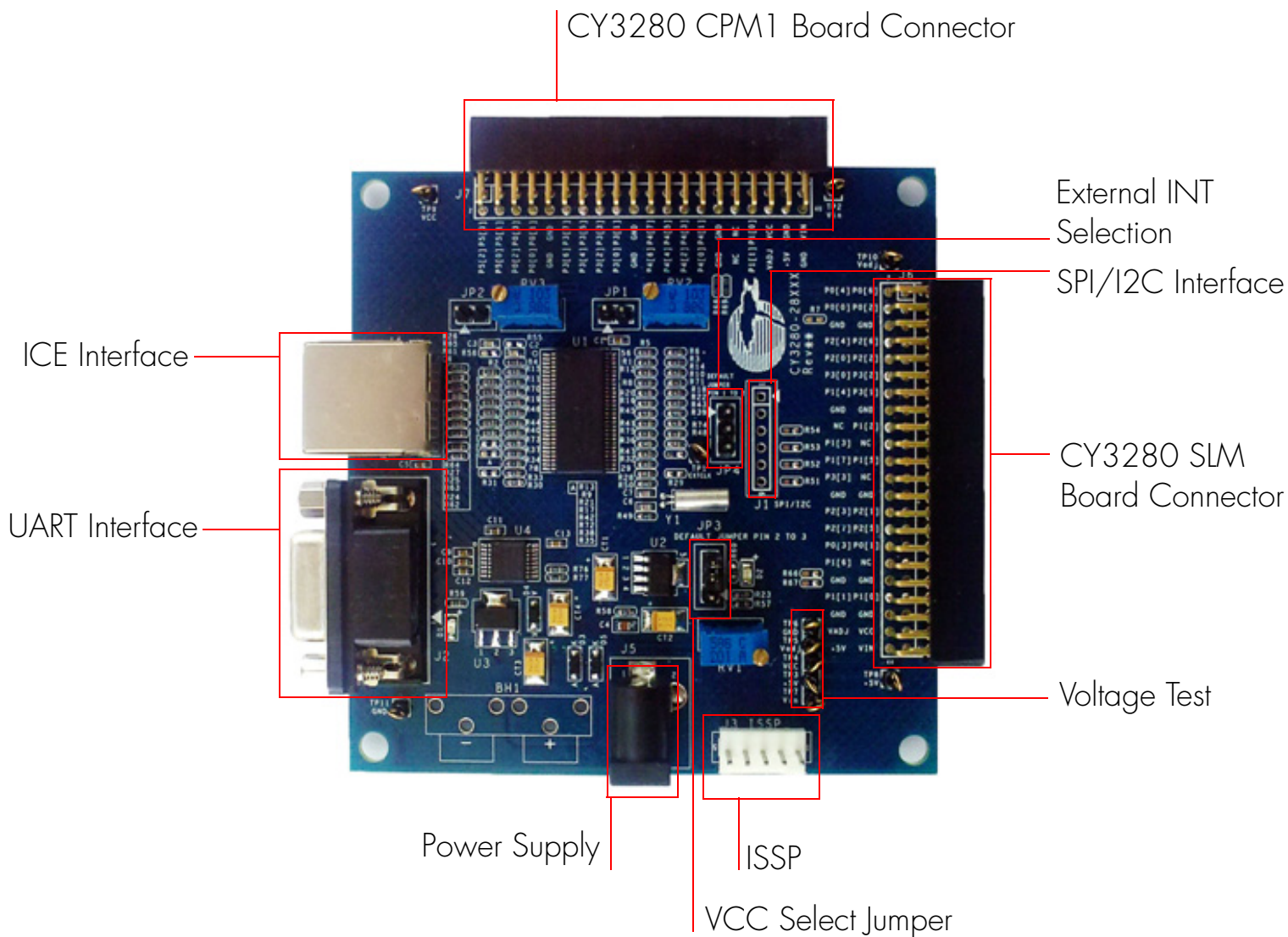
4



## Test the Board

- Touch one or more buttons with your finger
- The LEDs light up corresponding to the buttons being pressed

## CY3280-28XXX Universal CapSense Controller Board



For the latest information about this kit visit  
[www.cypress.com/go/CY3280-28XXX](http://www.cypress.com/go/CY3280-28XXX)



© 2010 Cypress Semiconductor Corporation. All rights reserved. All trademarks or registered trademarks referenced herein are the properties of their respective owners.

DOC#: 001-57454 REV \*\*

[+] Feedback