

# HFA30TA60CPbF

Ultrafast, Soft Recovery Diode

## Features

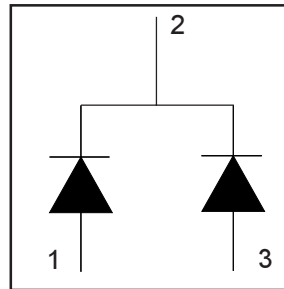
- Ultrafast Recovery
- Ultrasoft Recovery
- Very LOW  $I_{RRM}$
- Very Low  $Q_{rr}$
- Guaranteed Avalanche
- Specified at Operating Conditions
- Lead-Free

## Benefits

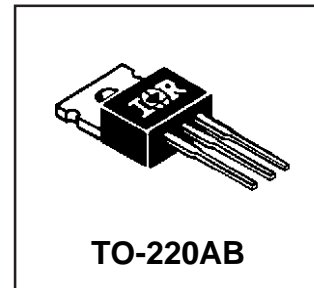
- Reduced RFI and EMI
- Reduced Power Loss in Diode and Switching Transistor
- Higher Frequency Operation
- Reduced Snubbing
- Reduced Parts Count

## Description

International Rectifier's HFA30TA60C is a state of the art center tap ultra fast recovery diode. Employing the latest in epitaxial construction and advanced processing techniques it features a superb combination of characteristics which result in performance which is unsurpassed by any rectifier previously available. With basic ratings of 600 volts and 15 amps per Leg continuous current, the HFA30TA60C is especially well suited for use as the companion diode for IGBTs and MOSFETs. In addition to ultra fast recovery time, the HEXFRED product line features extremely low values of peak recovery current ( $I_{RRM}$ ) and does not exhibit any tendency to "snap-off" during the  $t_b$  portion of recovery. The HEXFRED features combine to offer designers a rectifier with lower noise and significantly lower switching losses in both the diode and the switching transistor. These HEXFRED advantages can help to significantly reduce snubbing, component count and heatsink sizes. The HEXFRED HFA30TA60C is ideally suited for applications in power supplies and power conversion systems (such as inverters), motor drives, and many other similar applications where high speed, high efficiency is needed.



|  |
|--|
| $V_R = 600V$                                 |
| $V_F(\text{typ.})^* = 1.2V$                  |
| $I_{F(AV)} = 15A$                            |
| $Q_{rr}(\text{typ.}) = 80nC$                 |
| $I_{RRM}(\text{typ.}) = 4.0A$                |
| $t_{rr}(\text{typ.}) = 19ns$                 |
| $di_{(rec)M}/dt(\text{typ.})^* = 160A/\mu s$ |



## Absolute Maximum Ratings (per Leg)

|                           | Parameter   | Max         | Units |
|---------------------------|---|-------------|-------|
| $V_R$                     | Cathode-to-Anode Voltage                            | 600         | V     |
| $I_F @ T_C = 25^\circ C$  | Continuous Forward Current                          |             | A     |
| $I_F @ T_C = 100^\circ C$ | Continuous Forward Current                          | 15          |       |
| $I_{FSM}$                 | Single Pulse Forward Current                        | 150         |       |
| $I_{FRM}$                 | Maximum Repetitive Forward Current                  | 60          |       |
| $P_D @ T_C = 25^\circ C$  | Maximum Power Dissipation                           | 74          | W     |
| $P_D @ T_C = 100^\circ C$ | Maximum Power Dissipation                           | 29          |       |
| $T_J$<br>$T_{STG}$        | Operating Junction and<br>Storage Temperature Range | -55 to +150 | C     |

\* 125°C

10/19/04

Document Number: 94070

www.vishay.com

1

# HFA30TA60CPbF

International  
 Rectifier

## Electrical Characteristics (per Leg) @ T<sub>J</sub> = 25°C (unless otherwise specified)

|                 | Parameter                       | Min. | Typ. | Max. | Units | Test Conditions   |
|-----------------|---------------------------------|------|------|------|-------|---|
| V <sub>BR</sub> | Cathode Anode Breakdown Voltage | 600  | —    | —    | V     | I <sub>R</sub> = 100μA  |
| V <sub>FM</sub> | Max Forward Voltage             | —    | 1.3  | 1.7  | V     | I <sub>F</sub> = 15A  |
|                 |                                 | —    | 1.5  | 2.0  |       | I <sub>F</sub> = 30A  |
|                 |                                 | —    | 1.2  | 1.6  |       | I <sub>F</sub> = 15A, T <sub>J</sub> = 125°C                        |
| I <sub>RM</sub> | Max Reverse Leakage Current     | —    | 1.0  | 10   | μA    | V <sub>R</sub> = V <sub>R</sub> Rated                               |
|                 |                                 | —    | 400  | 1000 |       | T <sub>J</sub> = 125°C, V <sub>R</sub> = 0.8 x V <sub>R</sub> Rated |
| C <sub>T</sub>  | Junction Capacitance            | —    | 25   | 50   | pF    | V <sub>R</sub> = 200V   |
| L <sub>S</sub>  | Series Inductance               | —    | 8    | —    | nH    | Measured lead to lead 5mm from package body                         |

## Dynamic Recovery Characteristics (per Leg) @ T<sub>J</sub> = 25°C (unless otherwise specified)

|                           | Parameter                             | Min. | Typ. | Max. | Units | Test Conditions  |                        |
|---------------------------|---------------------------------------|------|------|------|-------|--|------------------------|
| t <sub>rr</sub>           | Reverse Recovery Time                 | —    | 19   | —    | ns    | I <sub>F</sub> = 1.0A, di <sub>F</sub> /dt = 200A/μs, V <sub>R</sub> = 30V |                        |
| t <sub>rr1</sub>          | See Fig. 5, 10                        | —    | 42   | 60   |       |  | T <sub>J</sub> = 25°C  |
| t <sub>rr2</sub>          |                                       | —    | 70   | 120  |       |  | T <sub>J</sub> = 125°C |
| I <sub>RRM1</sub>         | Peak Recovery Current                 | —    | 4.0  | 6.0  | A     | I <sub>F</sub> = 15A   |                        |
| I <sub>RRM2</sub>         | See Fig. 6                            | —    | 6.5  | 10   |       |  | T <sub>J</sub> = 125°C |
| Q <sub>rr1</sub>          | Reverse Recovery Charge               | —    | 80   | 180  | nC    | V <sub>R</sub> = 200V  |                        |
| Q <sub>rr2</sub>          | See Fig. 7                            | —    | 220  | 600  |       |  | T <sub>J</sub> = 125°C |
| di <sub>(rec)M</sub> /dt1 | Peak Rate of Fall of Recovery Current | —    | 250  | —    | A/μs  | di <sub>F</sub> /dt = 200A/μs  |                        |
| di <sub>(rec)M</sub> /dt2 | During t <sub>b</sub> See Fig. 8      | —    | 160  | —    |       |  | T <sub>J</sub> = 125°C |

## Thermal - Mechanical Characteristics (per Leg)

|                     | Parameter                               | Min. | Typ. | Max. | Units  |
|---------------------|---|------|------|------|--------|
| T <sub>lead</sub> ① | Lead Temperature                        | —    | —    | 300  | °C     |
| R <sub>thJC</sub>   | Junction-to-Case, Single Leg Conducting | —    | —    | 1.7  | K/W    |
|                     | Junction-to-Case, Both Legs Conducting  | —    | —    | 0.85 |        |
| R <sub>thJA</sub> ② | Thermal Resistance, Junction to Ambient | —    | —    | 40   |        |
| R <sub>thCS</sub> ③ | Thermal Resistance, Case to Heat Sink   | —    | 0.25 | —    |        |
| Wt                  | Weight                                  | —    | 6.0  | —    | g      |
|                     |   | —    | 0.21 | —    | (oz)   |
|                     | Mounting Torque                         | 6.0  | —    | 12   | Kg-cm  |
|                     |   | 5.0  | —    | 10   | lbf·in |

① 0.063 in. from Case (1.6mm) for 10 sec

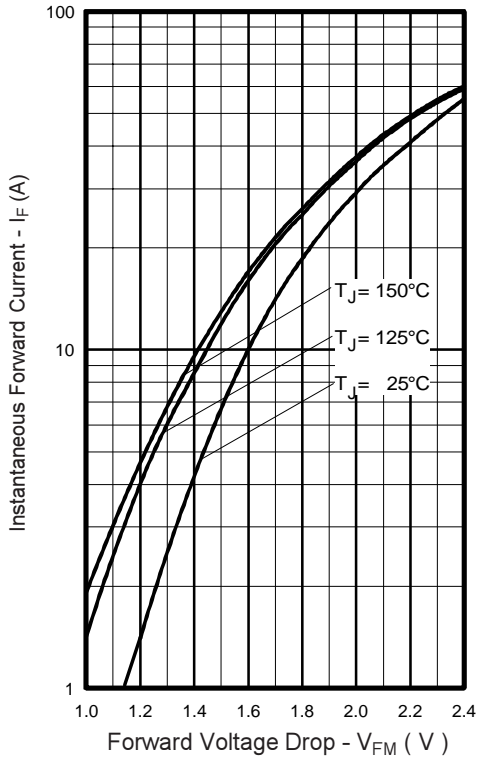
② Typical Socket Mount

③ Mounting Surface, Flat, Smooth and Greased

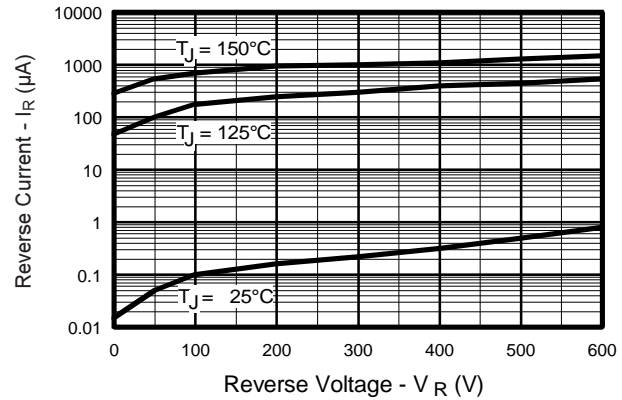
Document Number: 94070

www.vishay.com

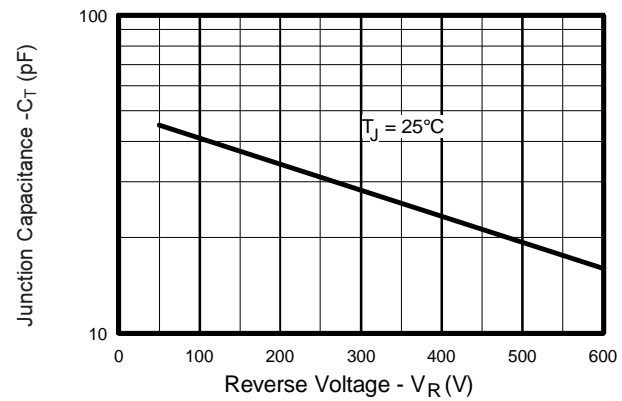
2



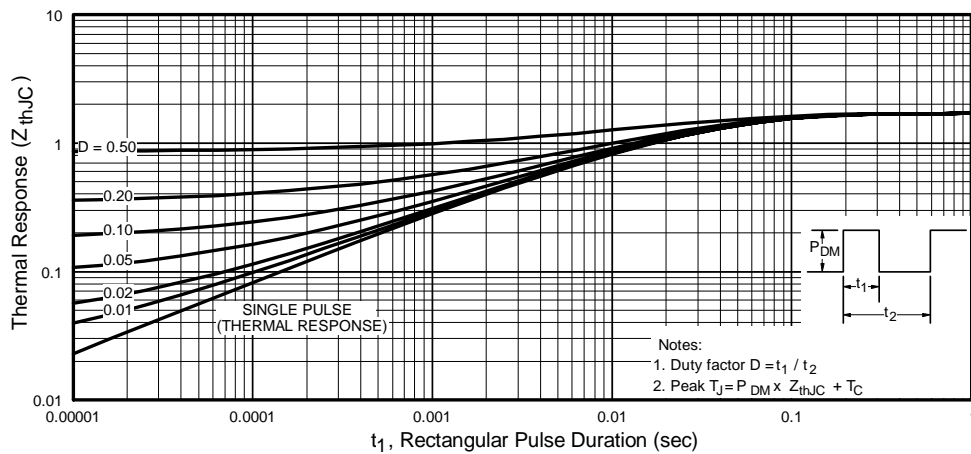
**Fig. 1 - Maximum Forward Voltage Drop vs. Instantaneous Forward Current, (per Leg)**



**Fig. 2 - Typical Reverse Current vs. Reverse Voltage, (per Leg)**



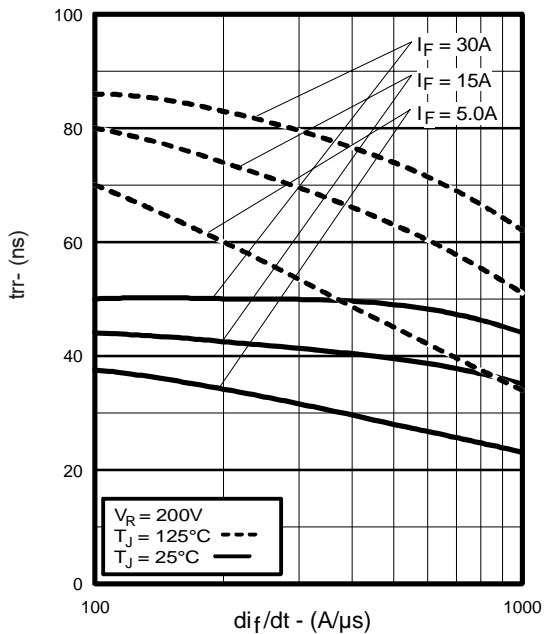
**Fig. 3 - Typical Junction Capacitance vs. Reverse Voltage, (per Leg)**



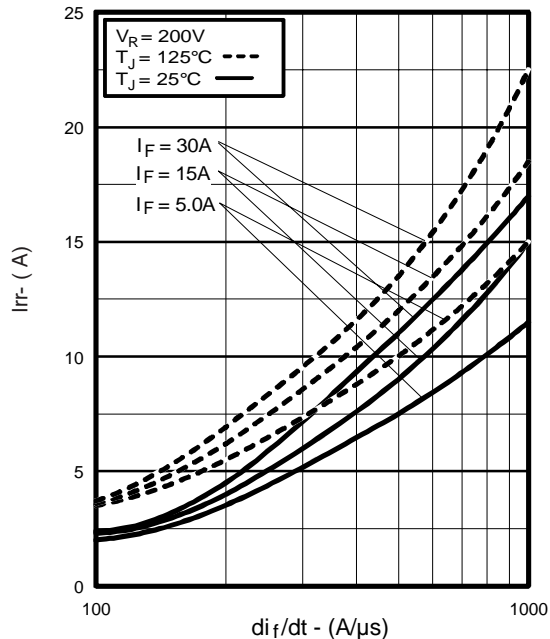
**Fig. 4 - Maximum Thermal Impedance  $Z_{thJC}$  Characteristics, (per Leg)**

# HFA30TA60CPbF

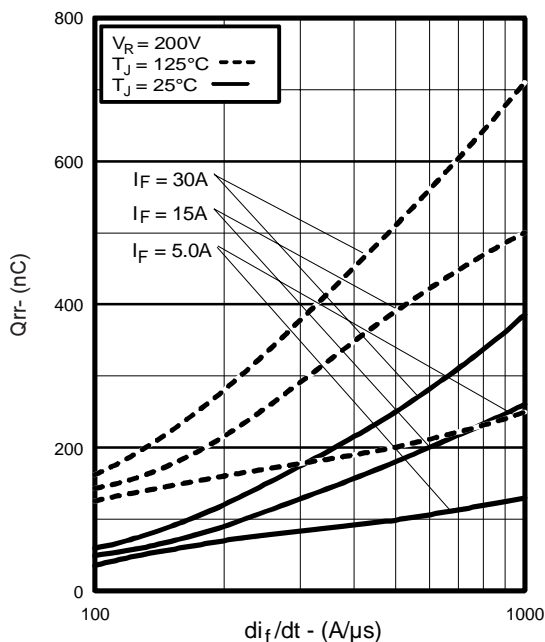
International  
 Rectifier



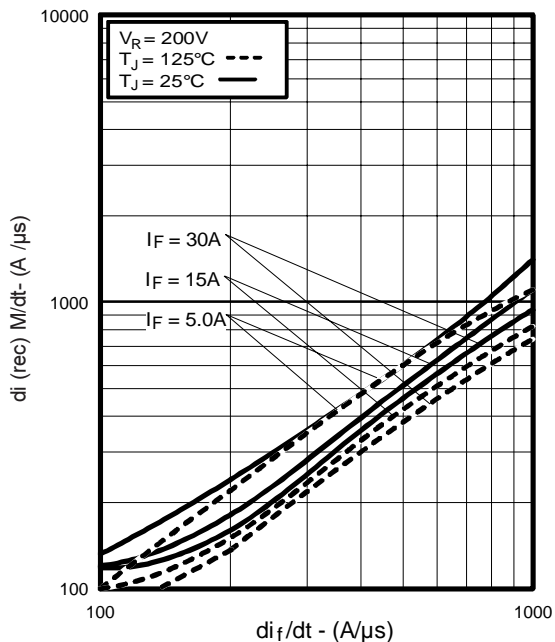
**Fig. 5 - Typical Reverse Recovery Time vs.  $di_f/dt$ , (per Leg)**



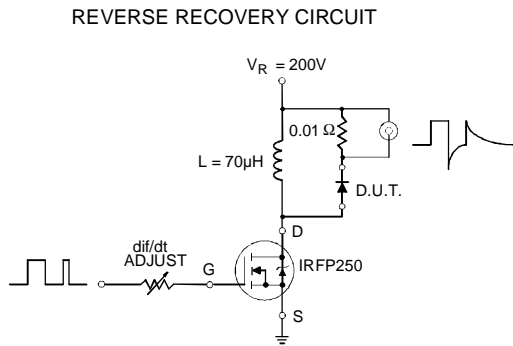
**Fig. 6 - Typical Recovery Current vs.  $di_f/dt$ , (per Leg)**



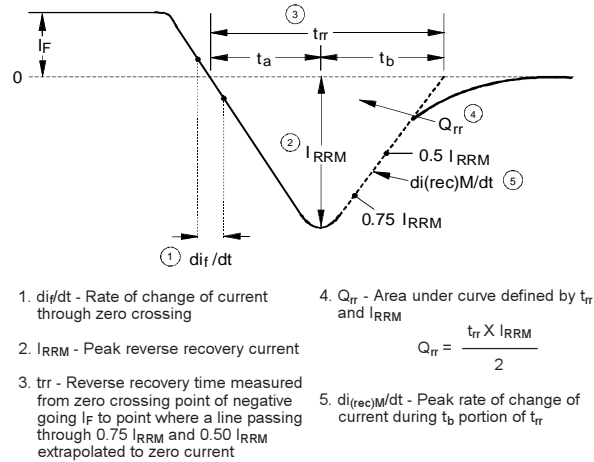
**Fig. 7 - Typical Stored Charge vs.  $di_f/dt$ , (per Leg)**



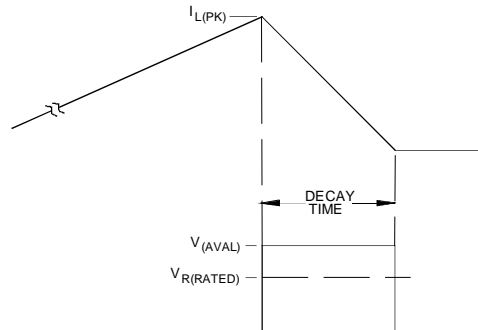
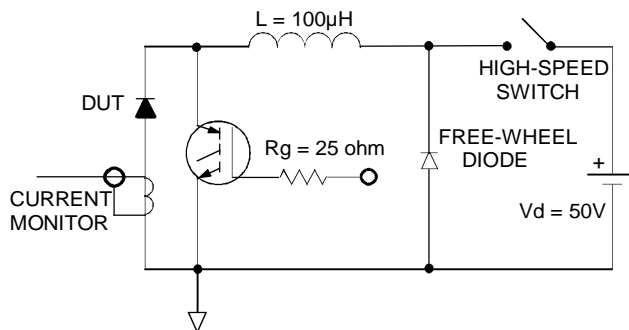
**Fig. 8 - Typical  $di_{(rec)M}/dt$  vs.  $di_f/dt$ , (per Leg)**



**Fig. 9 - Reverse Recovery Parameter Test Circuit**



**Fig. 10 - Reverse Recovery Waveform and Definitions**



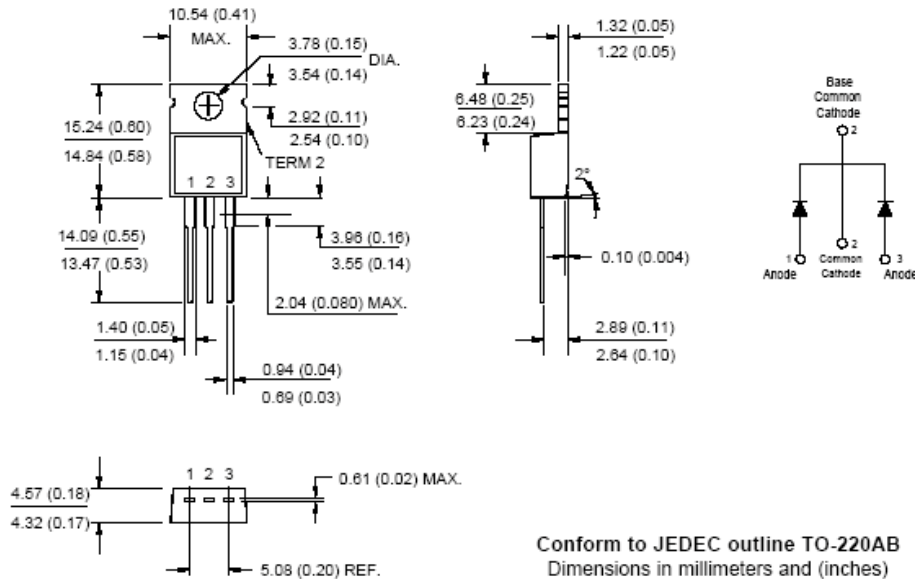
**Fig. 11 - Avalanche Test Circuit and Waveforms**

# HFA30TA60CPbF



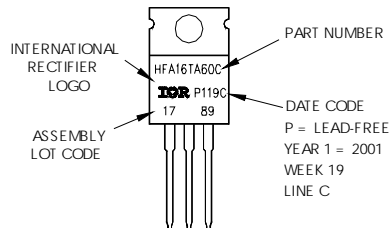
## TO-220AB Package Outline

Dimensions are shown in millimeters (inches)



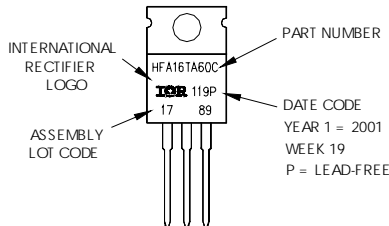
## TO-220AB Part Marking Information

EXAMPLE: THIS IS AHFA16TA60C  
LOT CODE 1789  
ASSEMBLED ON WW 19, 2001  
IN THE ASSEMBLY LINE "C"  
Note: "P" in the beginning of date code indicates "Lead-Free"



OR

EXAMPLE: THIS IS AHFA16TA60C  
LOT CODE 1789  
ASSEMBLED ON WW 19, 2001  
Note: "P" in assembly line position indicates "Lead-Free"



Data and specifications subject to change without notice.



IR WORLD HEADQUARTERS: 233 Kansas St., El Segundo, California 90245, USA Tel: (310) 252-7105  
TAC Fax: (310) 252-7903

Document Number: 94070

10/04  
www.vishay.com



## Notice

The products described herein were acquired by Vishay Intertechnology, Inc., as part of its acquisition of International Rectifier's Power Control Systems (PCS) business, which closed in April 2007. Specifications of the products displayed herein are pending review by Vishay and are subject to the terms and conditions shown below.

Specifications of the products displayed herein are subject to change without notice. Vishay Intertechnology, Inc., or anyone on its behalf, assumes no responsibility or liability for any errors or inaccuracies.

Information contained herein is intended to provide a product description only. No license, express or implied, by estoppel or otherwise, to any intellectual property rights is granted by this document. Except as provided in Vishay's terms and conditions of sale for such products, Vishay assumes no liability whatsoever, and disclaims any express or implied warranty, relating to sale and/or use of Vishay products including liability or warranties relating to fitness for a particular purpose, merchantability, or infringement of any patent, copyright, or other intellectual property right.

The products shown herein are not designed for use in medical, life-saving, or life-sustaining applications. Customers using or selling these products for use in such applications do so at their own risk and agree to fully indemnify Vishay for any damages resulting from such improper use or sale.

International Rectifier®, IR®, the IR logo, HEXFET®, HEXSense®, HEXDIP®, DOL®, INTERO®, and POWIRTRAIN® are registered trademarks of International Rectifier Corporation in the U.S. and other countries. All other product names noted herein may be trademarks of their respective owners.