

International IOR Rectifier

HEXFRED™

Features

- Ultrafast Recovery
- Ultrasoft Recovery
- Very Low I_{RRM}
- Very Low Q_{rr}
- Guaranteed Avalanche
- Specified at Operating Conditions
- Lead-Free

Benefits

- Reduced RFI and EMI
- Reduced Power Loss in Diode and Switching Transistor
- Higher Frequency Operation
- Reduced Snubbing
- Reduced Parts Count

Description

International Rectifier's HFA16PB120 is a state of the art center tap ultra fast recovery diode. Employing the latest in epitaxial construction and advanced processing techniques it features a superb combination of characteristics which result in performance which is unsurpassed by any rectifier previously available. With basic ratings of 1200 volts and 16 amps continuous current, the HFA16PB120 is especially well suited for use as the companion diode for IGBTs and MOSFETs. In addition to ultra fast recovery time, the HEXFRED product line features extremely low values of peak recovery current (I_{RRM}) and does not exhibit any tendency to "snap-off" during the t_b portion of recovery. The HEXFRED features combine to offer designers a rectifier with lower noise and significantly lower switching losses in both the diode and the switching transistor. These HEXFRED advantages can help to significantly reduce snubbing, component count and heatsink sizes. The HEXFRED HFA16PB120 is ideally suited for applications in power supplies and power conversion systems (such as inverters), motor drives, and many other similar applications where high speed, high efficiency is needed.

Absolute Maximum Ratings

	Parameter	Max.	Units
V_R	Cathode-to-Anode Voltage	1200	V
$I_F @ T_C = 100^\circ\text{C}$	Continuous Forward Current	30	A
I_{FSM}	Single Pulse Forward Current	120	
I_{FRM}	Maximum Repetitive Forward Current	90	
$P_D @ T_C = 25^\circ\text{C}$	Maximum Power Dissipation	350	W
$P_D @ T_C = 100^\circ\text{C}$	Maximum Power Dissipation	140	
T_J T_{STG}	Operating Junction and Storage Temperature Range	-55 to + 150	$^\circ\text{C}$

* 125°C

11/2/04

Document Number: 94069

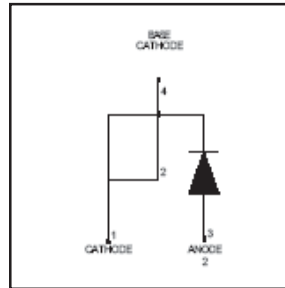
www.vishay.com

1

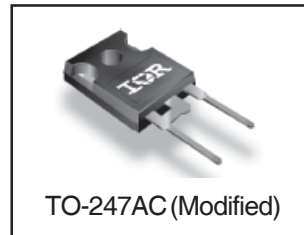
HFA30PB120PbF

PD -95686A

Ultrafast, Soft Recovery Diode



$V_R = 1200\text{V}$
$V_F(\text{typ.})^* = 2.3\text{V}$
$I_{F(AV)} = 30\text{A}$
$Q_{rr}(\text{typ.}) = 120\text{nC}$
$I_{RRM}(\text{typ.}) = 4.7\text{A}$
$t_{rr}(\text{typ.}) = 47\text{ns}$
$di_{(rec)M}/dt(\text{typ.})^* = 240\text{A}/\mu\text{s}$



HFA30PB120PbF

International
 Rectifier

Electrical Characteristics @ T_J = 25°C (unless otherwise specified)

Symbol	Parameter	Min.	Typ.	Max.	Units	Conditions
V _{BR}	Cathode Anode Breakdown Voltage	1200	—	—	V	I _R = 100μA
V _{FM}	Max Forward Voltage	—	2.4	4.1	V	I _F = 30A
		—	3.1	5.7		I _F = 60A
		—	2.3	4.0		I _F = 30A, T _J = 125°C
I _{RM}	Max Reverse Leakage Current	—	1.3	40	μA	V _R = V _R Rated
		—	1.1	4000		T _J = 125°C, V _R = 0.8 x V _R Rated
C _T	Junction Capacitance	—	50	75	pF	V _R = 200V
L _S	Series Inductance	—	8.0	—	nH	Measured lead to lead 5mm from package body

Dynamic Recovery Characteristics @ T_J = 25°C (unless otherwise specified)

Symbol	Parameter	Min.	Typ.	Max.	Units	Conditions
t _{rr}	Reverse Recovery Time	—	47	—	ns	I _F =1.0A, di _F /dt=200A/μs, V _R = 30V
t _{rr1}	See Fig. 5, 10	—	110	170		T _J = 25°C
t _{rr2}		—	170	260		T _J = 125°C
I _{RRM1}	Peak Recovery Current	—	10	15	A	T _J = 25°C
I _{RRM2}	See Fig. 6	—	16	24		T _J = 125°C
Q _{rr1}	Reverse Recovery Charge	—	650	980	nC	T _J = 25°C
Q _{rr2}	See Fig. 7	—	1540	2310		T _J = 125°C
di _{(rec)M} /dt1	Peak Rate of Fall of Recovery Current	—	270	—	A/μs	T _J = 25°C
di _{(rec)M} /dt1	During t _b See Fig. 8	—	240	—		T _J = 125°C

Thermal - Mechanical Characteristics

	Parameter	Min.	Typ.	Max.	Units
T _{lead} ②	Lead Temperature	—	—	300	°C
R _{qJC}	Thermal Resistance, Junction-to-Case	—	—	0.36	°C/W
R _{qJA} ③	Thermal Resistance, Junction-to-Ambient	—	—	80	
R _{qCS} ④	Thermal Resistance, Case-to-Heat Sink	—	0.50	—	
Wt	Weight	—	2.0 (0.07)	—	g (oz.)
	Mounting Torque	6.0	—	12	kg-cm
		5.0	—	10	lbf-in

Notes:

- ① L=100μH, duty cycle limited by max T_J
- ② 0.063 in. from Case (1.6mm) for 10 sec
- ③ Typical Socket Mount
- ④ Mounting Surface, Flat, Smooth and Greased

Document Number: 94069

www.vishay.com

2

HFA30PB120PbF

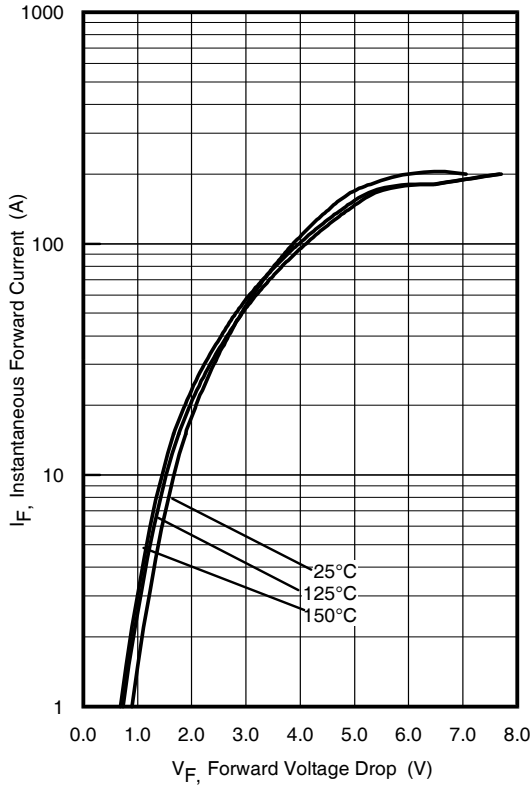


Fig. 1 - Maximum Forward Voltage Drop vs. Instantaneous Forward Current

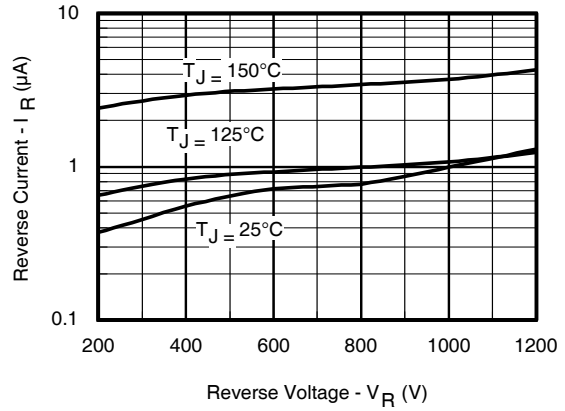


Fig. 2 - Typical Reverse Current vs. Reverse Voltage

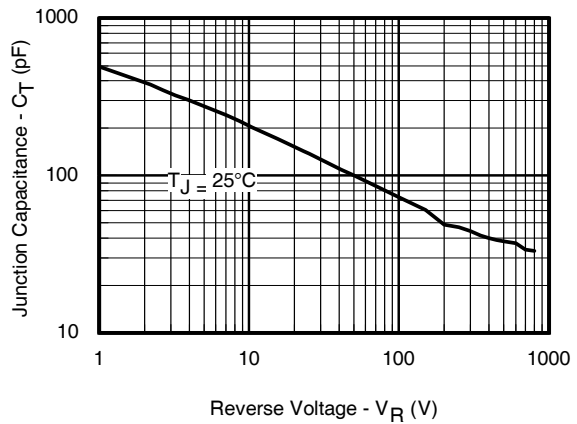


Fig. 3 - Typical Junction Capacitance vs. Reverse Voltage

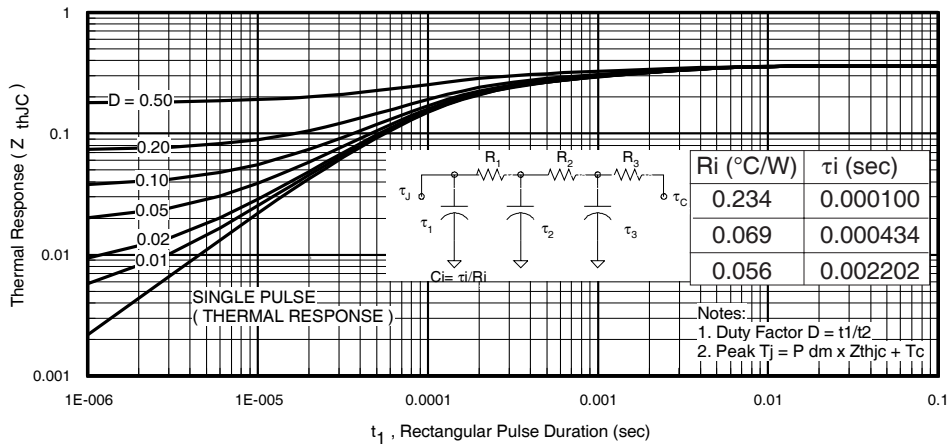


Fig. 4 - Maximum Thermal Impedance Z_{thjc} Characteristics

HFA30PB120PbF

International
IR Rectifier

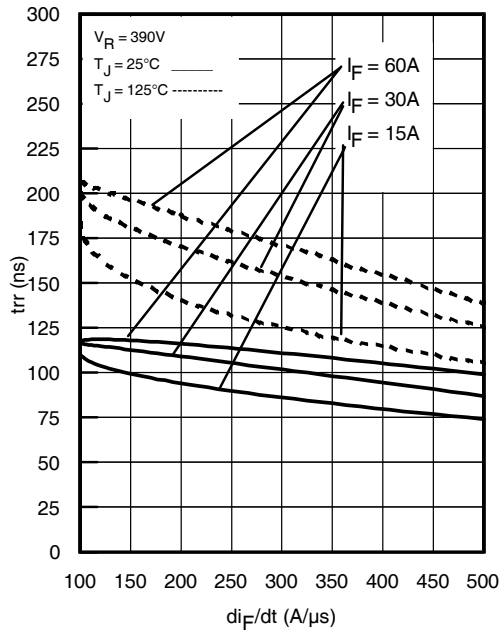


Fig. 5 - Typical Reverse Recovery vs. di_f/dt ,
(per Leg)

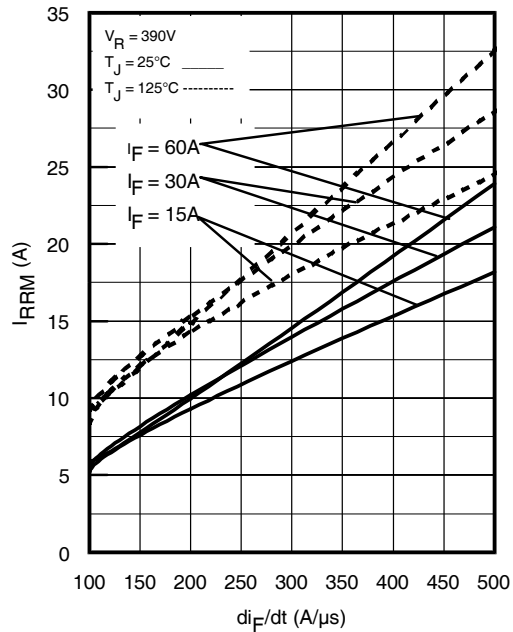


Fig. 6 - Typical Recovery Current vs. di_f/dt ,
(per Leg)

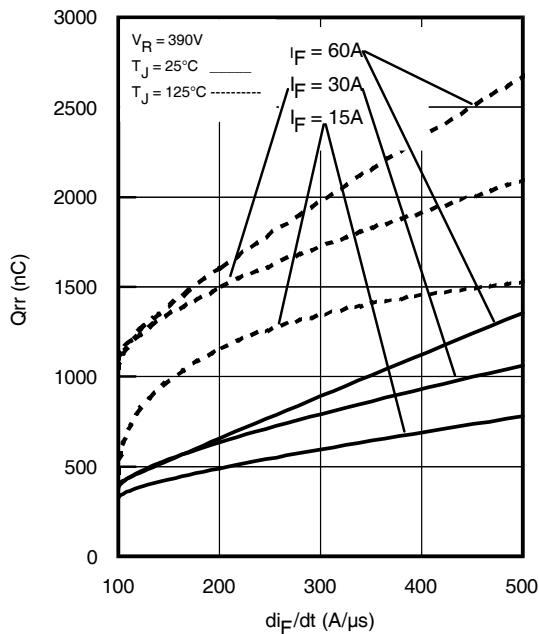


Fig. 7 - Typical Stored Charge vs. di_f/dt ,
(per Leg)

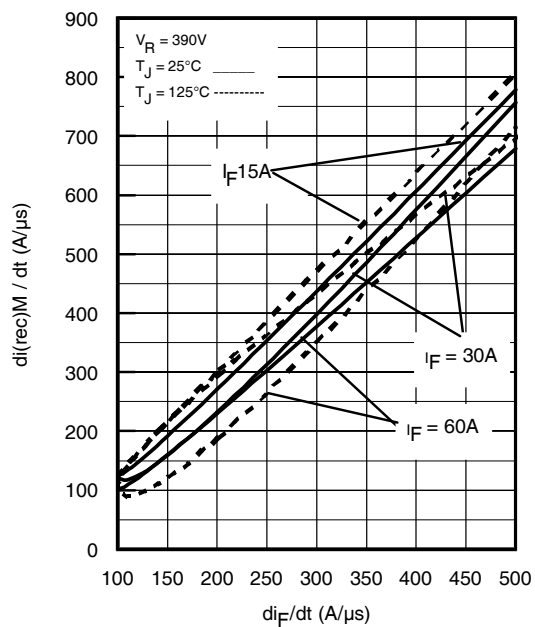


Fig. 8 - Typical $di_{(rec)M}/dt$ vs. di_f/dt ,
(per Leg)

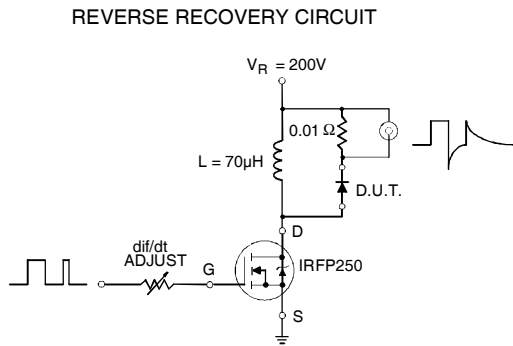


Fig. 9 - Reverse Recovery Parameter Test Circuit

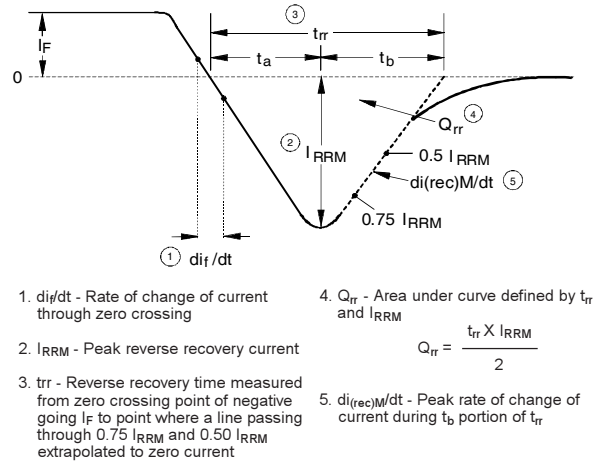


Fig. 10 - Reverse Recovery Waveform and Definitions

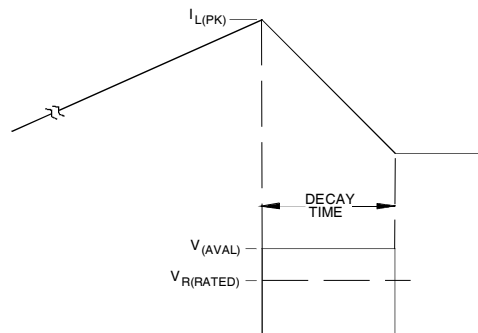
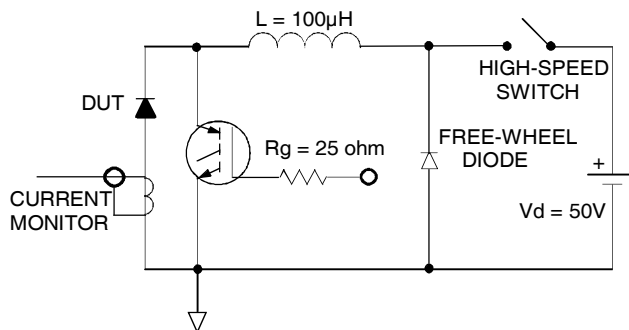


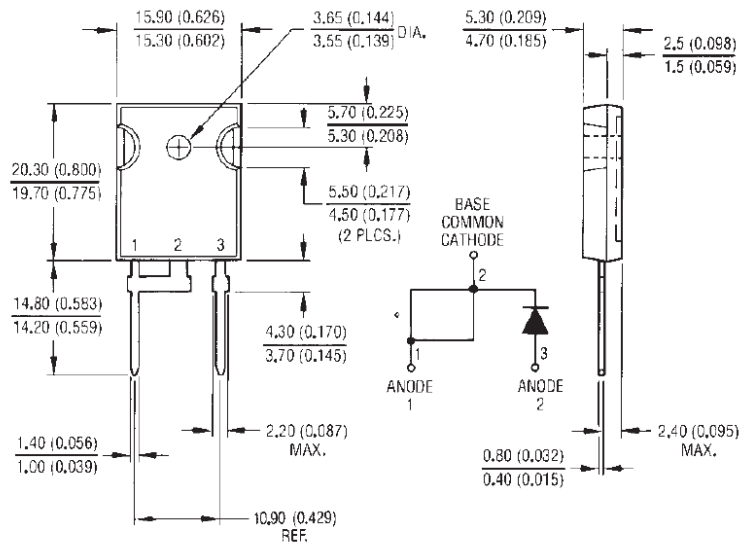
Fig. 11 - Avalanche Test Circuit and Waveforms

HFA30PB120PbF

International
IR Rectifier

TO-247AC (Modified) Package Outline Drawing

Dimensions are in millimeters (inches)



Conforms to JEDEC Outline TO-247AC(Modified)
Dimensions in millimeters and inches

Note: Marking "P" indicates Lead-Free

Data and specifications subject to change without notice.

International
IR Rectifier

IR WORLD HEADQUARTERS: 233 Kansas St., El Segundo, California 90245, USA Tel: (310) 252-7105
TAC Fax: (310) 252-7903

11/04

Document Number: 94069

www.vishay.com

6



Notice

The products described herein were acquired by Vishay Intertechnology, Inc., as part of its acquisition of International Rectifier's Power Control Systems (PCS) business, which closed in April 2007. Specifications of the products displayed herein are pending review by Vishay and are subject to the terms and conditions shown below.

Specifications of the products displayed herein are subject to change without notice. Vishay Intertechnology, Inc., or anyone on its behalf, assumes no responsibility or liability for any errors or inaccuracies.

Information contained herein is intended to provide a product description only. No license, express or implied, by estoppel or otherwise, to any intellectual property rights is granted by this document. Except as provided in Vishay's terms and conditions of sale for such products, Vishay assumes no liability whatsoever, and disclaims any express or implied warranty, relating to sale and/or use of Vishay products including liability or warranties relating to fitness for a particular purpose, merchantability, or infringement of any patent, copyright, or other intellectual property right.

The products shown herein are not designed for use in medical, life-saving, or life-sustaining applications. Customers using or selling these products for use in such applications do so at their own risk and agree to fully indemnify Vishay for any damages resulting from such improper use or sale.

International Rectifier®, IR®, the IR logo, HEXFET®, HEXSense®, HEXDIP®, DOL®, INTERO®, and POWIRTRAIN® are registered trademarks of International Rectifier Corporation in the U.S. and other countries. All other product names noted herein may be trademarks of their respective owners.