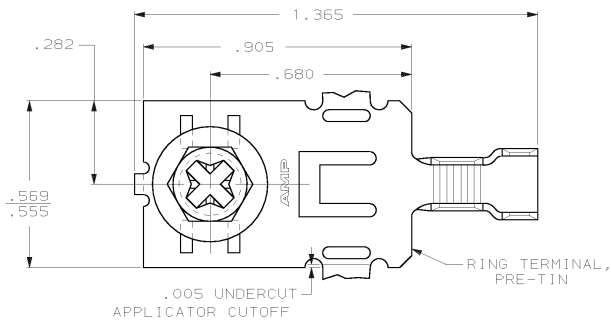
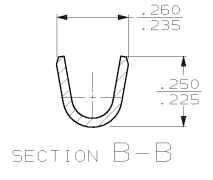
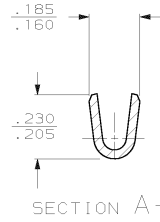
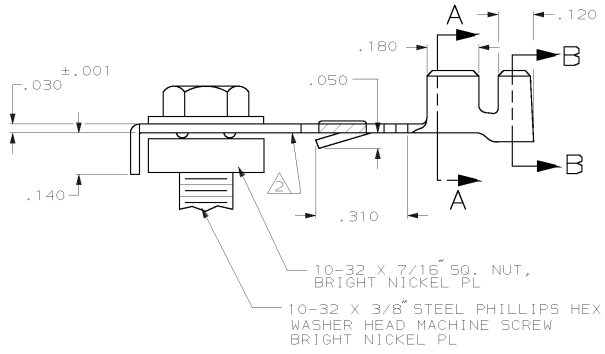


DRAWING MADE IN THIRD ANGLE PROJECTION  
 THIS DRAWING IS UNPUBLISHED. RELEASED FOR PUBLICATION .19  
 © COPYRIGHT 19 BY AMP INCORPORATED. ALL INTERNATIONAL RIGHTS RESERVED.

| LOG |    | DISP |   | ZONE |  | LTR |  | REVISIONS |                      | DATE    | APPD  |
|-----|----|------|---|------|--|-----|--|-----------|----------------------|---------|-------|
| AF  | 50 | P    | F |      |  |     |  | B         | REV PER 061A-0137-99 | 23JUN99 | JR/DD |



- 1 CONTINUOUS STRIP ON REEL.
- 2 VERTICAL BURRS NOT TO EXCEED .005 ALONG THIS EDGE.
- 3 BACK OUT TORQUE OF SCREW TO BE A MIN OF 5 INCH LBS AND A MAX OF 25 INCH LBS.
- 4 REFERENCE APPLICATOR LOG SHEET FOR CRIMP INFORMATION.



|  |  |   |                  |                      |
|--|--|---|------------------|----------------------|
|  |  | .110-.160                                 | 16-12            | 520994-1             |
|  |  | INSULATION RANGE                          | WIRE RANGE       | PART NO              |
| DO NOT SCALE PRINT. UNLESS SPECIFIED DIMENSIONS IN INCHES TOLERANCES ON :<br>2 PLC DEC ± -<br>3 PLC DEC ± .015<br>ANGLES ± - | DR 7/12/94<br>P FORTNEY<br>CHK 7/12/94<br>MS FEHER<br>APPD 7/12/94<br>G YETTER | AMP INCORPORATED<br>Harrisburg, Pa. 17105 |                  |                      |
| MATERIAL<br>RING TERMINAL<br>082 BRASS   | APPD 7/12/94<br>R KUZO<br>PRODUCT SPEC<br>108-1191                             | NAME<br>POWER RING                        |                  |                      |
| FINISH<br>SEE COMPONENT<br>CALL-OUTS   | APPLICATION SPEC<br>114-2087   | SIZE<br>C                                 | FSCM NO<br>00779 | DRAWING NO<br>520994 |
| WEIGHT   |  | SCALE<br>4:1                              | SHEET<br>1 OF 1  |                      |

AMP 1471-B REV 3-87  
 23-JUN-99 14:38:03 amp13469 /home/amp13469/ednmod

CUSTOMER DRAWING