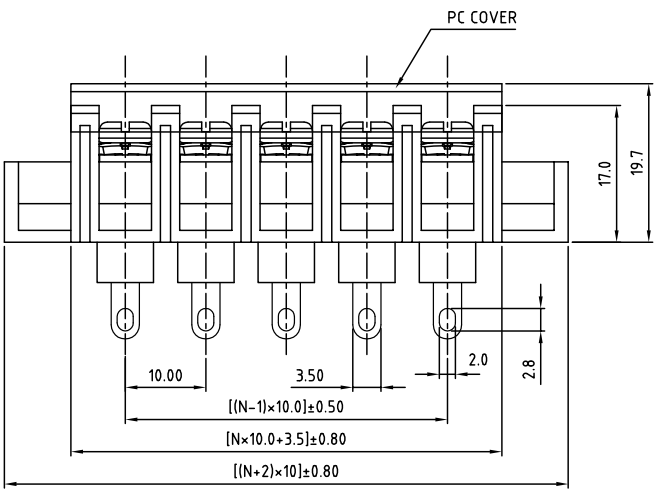
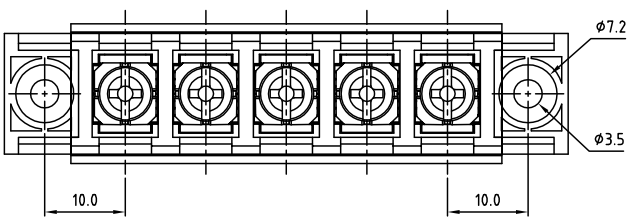
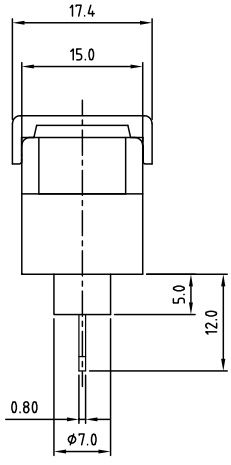


| SIGN | DATE | DESCRIPTION | APPROVER |
|------|------|-------------|----------|
|      |      |             |          |
|      |      |             |          |
|      |      |             |          |

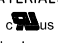
THIS IS CAD DRAWING, DO NOT REVISE MANUALLY!!!



N=Number of poles



**SPECIFICATIONS**

- VOLTAGE & CURRENT: 300 V, 20 A  
 WITHSTANDING VOLTAGE: AC 2000 V/Min  
 INSULATION RESISTANCE: 1000 MΩ OR MORE AT DC 500 V  
 TEMPERATURE RANGE: -40 °C ~ +105 °C  
 SCREW TORQUE VALUE: 12Lb-In.  
 WIRE RANGE: 22 - 12 AWG  
 1) MOLDED PARTS: THERMOPLASTIC, UL 94 V-0 BLACK  
 2) TERMINAL: BRASS, 0.8t, Tin PLATED  
 3) TERMINAL SCREWS: STEEL, Ni PLATED, M3.5  
 4) COVER MATERIAL: PC  
 APPROVAL:   
 RoHS Compliant

PART NUMBER: OSTYK606XX130

NO. OF POLES  
 02: 2 POLES  
 03: 3 POLES  
 04: 4 POLES  
 ...  
 30: 30 POLES



THESE DRAWINGS AND SPECIFICATIONS ARE THE PROPERTY OF ON-SHORE TECHNOLOGY, INC. AND SHALL NOT BE REPRODUCED, COPIED OR USED IN ANY MANNER WITHOUT THE PRIOR WRITTEN CONSENT OF ON-SHORE TECHNOLOGY, INC.

| TITLE                 |                      | OSTYK-606 With Flange&With Cover Series |                   |          |             |            |
|-----------------------|----------------------|---|-------------------|----------|-------------|------------|
| PART NO.              | OSTYK606XX130        | DWG NO.                                 | OSTYK606XX130.DWG |          |             |            |
| APPROVED              | CHECKED              | DESIGNED                                | DRAWN             | CUST NO. | Tolerance   |            |
| Shi Jun<br>2007.07.18 | Seamus<br>2007.07.18 | LUCY<br>2007.7.18                       | LUCY<br>2007.7.18 |          | UNIT: mm    | X. ±0.50   |
|                       |                      |   |                   |          | SCALE: NONE | X.XX ±0.30 |
|                       |                      |   |                   |          | REV: B      | X* ±0.10   |
|                       |                      |   |                   |          |             | X* ±1*     |