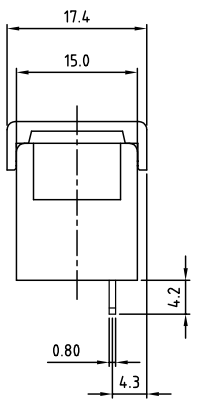
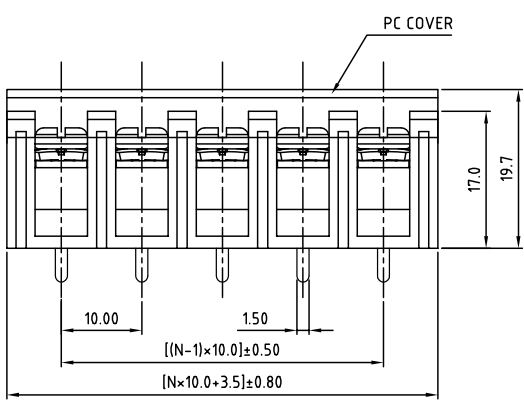
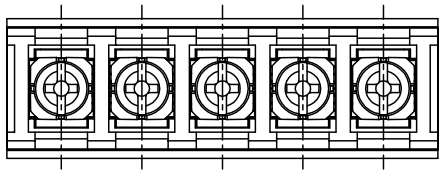


SIGN	DATE	DESCRIPTION	APPROVER
THIS IS CAD DRAWING, DO NOT REVISE MANUALLY!!!			



SPECIFICATIONS

VOLTAGE & CURRENT: 300 V, 20 A
 WITHSTANDING VOLTAGE: AC 2000 V/Min
 INSULATION RESISTANCE: 1000 MΩ OR MORE AT DC 500 V
 TEMPERATURE RANGE: -40 °C ~ +105 °C
 SCREW TORQUE VALUE: 12Lb-In
 WIRE RANGE: 22 - 12 AWG

1) MOLDED PARTS: THERMOPLASTIC, UL 94 V-0 BLACK
 2) TERMINAL: BRASS, 0.8t, Tin PLATED
 3) TERMINAL SCREWS: STEEL, Ni PLATED, M3.5
 4) COVER MATERIAL: PC

APPROVAL: us

RoHS Compliant

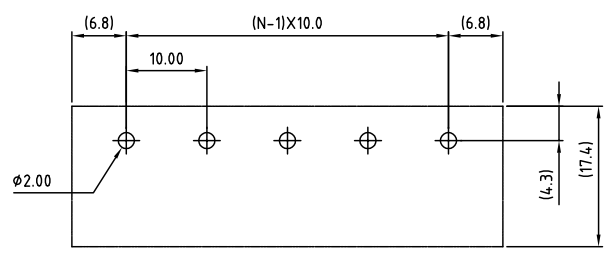
PART NUMBER: OSTYK604XX230

NO. OF POLES

02: 2 POLES
 03: 3 POLES
 04: 4 POLES
 ...
 30: 30 POLES

THESE DRAWINGS AND SPECIFICATIONS ARE THE PROPERTY OF ON-SHORE TECHNOLOGY, INC. AND SHALL NOT BE REPRODUCED, COPIED OR USED IN ANY MANNER WITHOUT THE PRIOR WRITTEN CONSENT OF ON-SHORE TECHNOLOGY, INC.

N=Number of poles



P.C.B LAYOUT

ON-SHORE TECHNOLOGY, INC.

TITLE		OSTYK-604 W/O Flange Series		
PART NO.		OSTYK604XX230		DWG NO. OSTYK604XX230.DWG
APPROVED	CHECKED	DESIGNED	DRAWN	CUST NO.
Shi Jun 2007.07.18	Seamus 2007.07.18	LUCY 2007.7.18	LUCY 2007.7.18	
SHEET: 01/01				Tolerance X. ±0.50 X.X ±0.30 X.XX ±0.10 X* ±1*
				UNIT: mm SCALE: NONE REV.C