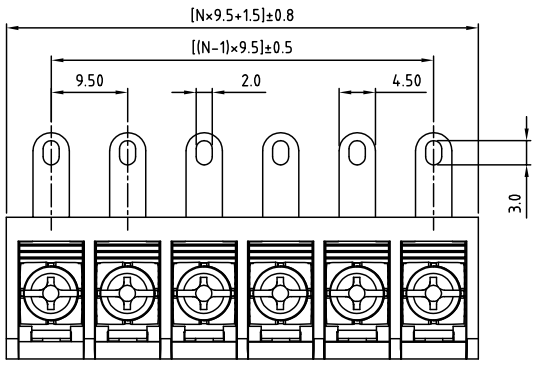
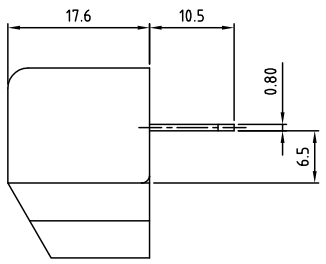
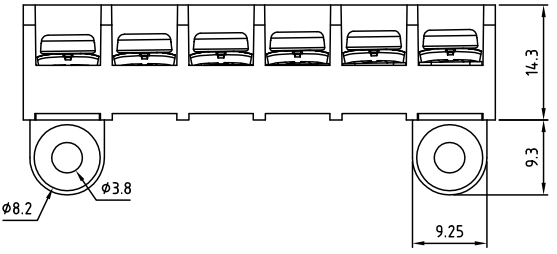


SIGN	DATE	DESCRIPTION	APPROVER
THIS IS CAD DRAWING, DO NOT REVISE MANUALLY!!!			



N=Number of poles



SPECIFICATIONS
 VOLTAGE & CURRENT: 300 V, 25 A
 WITHSTANDING VOLTAGE: AC 2000 V/Min
 INSULATION RESISTANCE: 1000 MΩ OR MORE AT DC 500 V
 TEMPERATURE RANGE: -40 °C ~ +105 °C
 SCREW TORQUE VALUE: 10.54 Lb-in.
 WIRE RANGE: 22 - 14 AWG
 1) MOLDED PARTS: THERMOPLASTIC, UL 94 V-0 BLACK
 2) TERMINAL: BRASS, 0.8t, Tin PLATED
 3) TERMINAL SCREWS: STEEL, Ni PLATED, M3.5
 APPROVAL:

RoHS Compliant

PART NUMBER: OSTYK443XX030

NO. OF POLES
 02: 2 POLES
 03: 3 POLES
 04: 4 POLES
 ...
 30: 30 POLES

THESE DRAWINGS AND SPECIFICATIONS ARE THE PROPERTY OF ON-SHORE TECHNOLOGY, INC. AND SHALL NOT BE REPRODUCED, COPIED OR USED IN ANY MANNER WITHOUT THE PRIOR WRITTEN CONSENT OF ON-SHORE TECHNOLOGY, INC.

ON-SHORE TECHNOLOGY, INC.		TITLE		OSTYK-443 W/O Flange Series	
		PART NO.		OSTYK443XX030	
APPROVED		CHECKED	DESIGNED	DRAWN	CUST NO.
Shi Jun 2007.07.18		Seamus 2007.07.18	LUCY 2007.7.18	LUCY 2007.7.18	
		SHEET: 01/01		UNIT: mm	Tolerance
				SCALE: NONE	X. ±0.50
				REV: B	X.XX ±0.30
					X.XX ±0.10
					X* ±1*