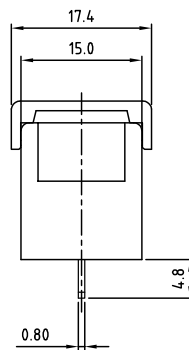
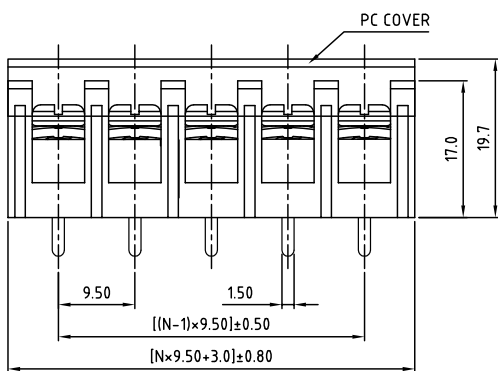
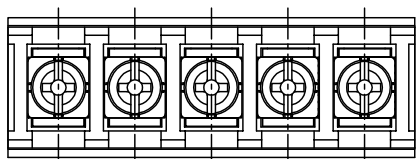


SIGN	DATE	DESCRIPTION	APPROVER
THIS IS CAD DRAWING, DO NOT REVISE MANUALLY!!!			



**SPECIFICATIONS**

VOLTAGE & CURRENT: 300 V, 20 A

WITHSTANDING VOLTAGE: AC 2000 V/Min

INSULATION RESISTANCE: 1000 MΩ OR MORE AT DC 500 V

TEMPERATURE RANGE: -40 °C to 105 °C

SCREW TORQUE VALUE: 12 Lb-In.

WIRE RANGE: 22 - 12AWG

1) MOLDED PARTS: THERMOPLASTIC, UL 94 V-0 BLACK

2) TERMINAL: BRASS, 0.8t, Tin PLATED

3) TERMINAL SCREWS: STEEL, Ni PLATED, M3.5

4) COVER MATERIAL: PC

APPROVAL: us

RoHS Compliant

PART NUMBER: OSTYK501XX230

NO. OF POLES

02: 2 POLES

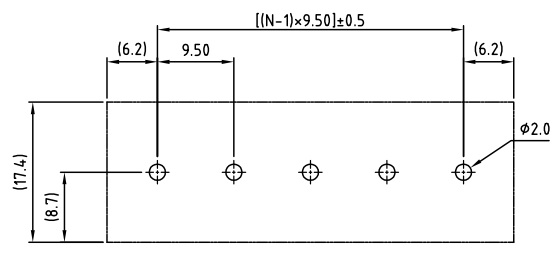
03: 3 POLES

04: 4 POLES

...

30: 30 POLES

N=Number of poles



P.C.B LAYOUT

THESE DRAWINGS AND SPECIFICATIONS ARE THE PROPERTY OF ON-SHORE TECHNOLOGY, INC. AND SHALL NOT BE REPRODUCED, COPIED OR USED IN ANY MANNER WITHOUT THE PRIOR WRITTEN CONSENT OF ON-SHORE TECHNOLOGY, INC.

		TITLE				OSTYK-501 W/O Flange&With Cover Series	
		PART NO.		DWG NO.		OSTYK501XX230.DWG	
APPROVED		CHECKED	DESIGNED	DRAWN	CUST NO.		Tolerance
Shi Jun 2007.07.18		Seamus 2007.07.18	LUCY 2007.7.18	LUCY 2007.7.18			X. ±0.50 X.X ±0.30 X.XX ±0.10 X* ±1*
SHEET: 01/01		REV: B		UNIT: mm		SCALE: NONE	