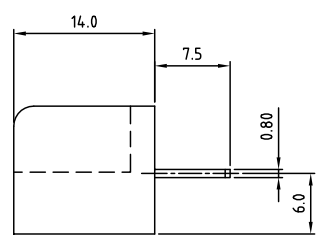
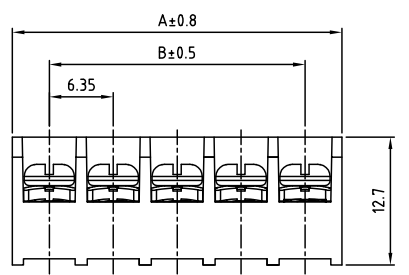
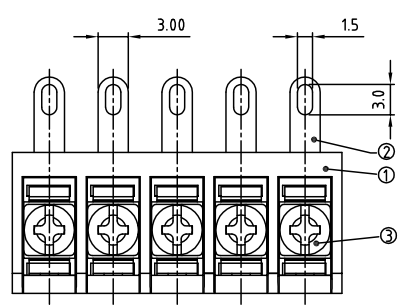


SIGN	DATE	DESCRIPTION	APPROVER
THIS IS CAD DRAWING, DO NOT REVISE MANUALLY!!!			



SPECIFICATIONS

VOLTAGE & CURRENT: 250 V, 10A
 WITHSTANDING VOLTAGE: AC 2000 V/Min
 INSULATION RESISTANCE: 1000 MΩ OR MORE AT DC 500 V
 TEMPERATURE RANGE: -40 °C ~+105 °C
 SCREW TORQUE VALUE: 5.3 Lb-in.
 WIRE RANGE: 22 - 18 AWG

1) MOLDED PARTS: Thermoplastic (UL 94 V-0)BLACK
 2) TERMINAL: BRASS, 0.8t, Tin PLATED
 3) TERMINAL SCREWS: STEEL, Ni PLATED, M3

APPROVAL: **OST**

RoHS Compliant

PART NUMBER:
OSTYK223XX030

NO. OF POLES
 02: 2 POLES
 03: 3 POLES
 04: 4 POLES
 :
 30: 30 POLES

THESE DRAWINGS AND SPECIFICATIONS ARE THE PROPERTY OF ON-SHORE TECHNOLOGY, INC. AND SHALL NOT BE REPRODUCED, COPIED OR USED IN ANY MANNER WITHOUT THE PRIOR WRITTEN CONSENT OF ON-SHORE TECHNOLOGY, INC.

POLE	1	2	3	4	5	6	7	8	9	10	11	12	13	14	15	16
A	13.70	20.05	26.40	32.75	39.10	45.45	51.80	58.15	64.50	70.85	77.20	83.55	89.90	96.25	102.60	
B	6.35	12.70	19.05	25.40	31.75	38.10	44.45	50.80	57.15	63.50	69.85	76.20	82.55	88.90	95.26	
POLE	17	18	19	20	21	22	23	24	25	26	27	28	29	30		
A	108.95	115.30	121.65	128.00	134.35	140.70	147.05	153.40	159.75	166.10	172.45	178.80	185.15	191.50		
B	101.60	107.95	114.30	120.65	127.00	133.35	139.70	146.05	152.40	158.75	165.10	171.45	177.80	184.15		

ON-SHORE TECHNOLOGY, INC.

TITLE		OSTYK-223 Series			
PART NO.		OSTYK223XX030		DWG NO. OSTYK223XX030.DWG	
APPROVED	CHECKED	DESIGNED	DRAWN	CUST NO.	
Shi Jun 2007.07.18	Seamus 2007.07.18	LUCY 2007.7.18	LUCY 2007.7.18		
				UNIT: mm SCALE: NONE SHEET: 01/01 REV.: C	
				Tolerance X. ±0.50 X.X ±0.30 X.XX ±0.10 X* ±1*	